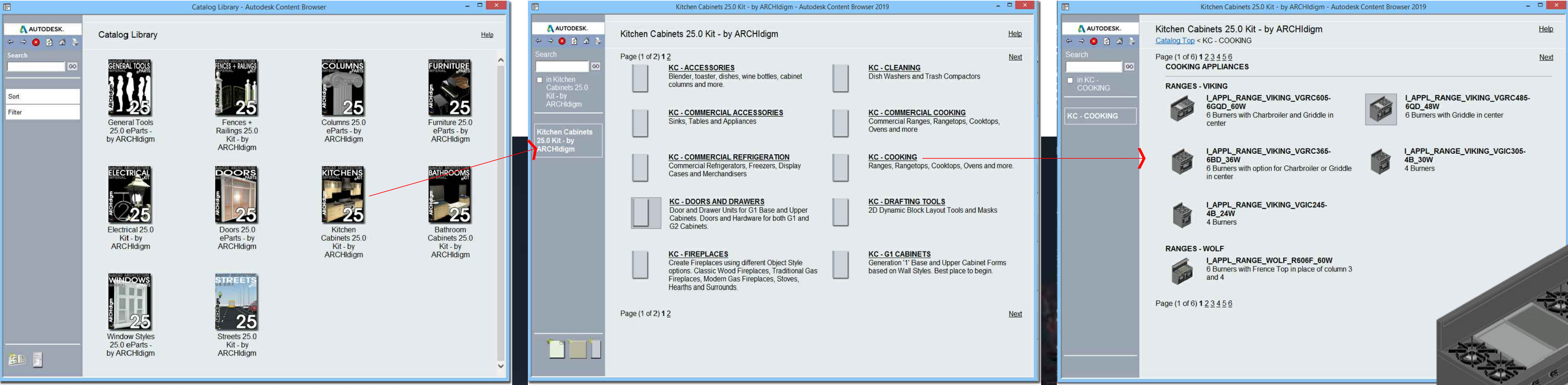
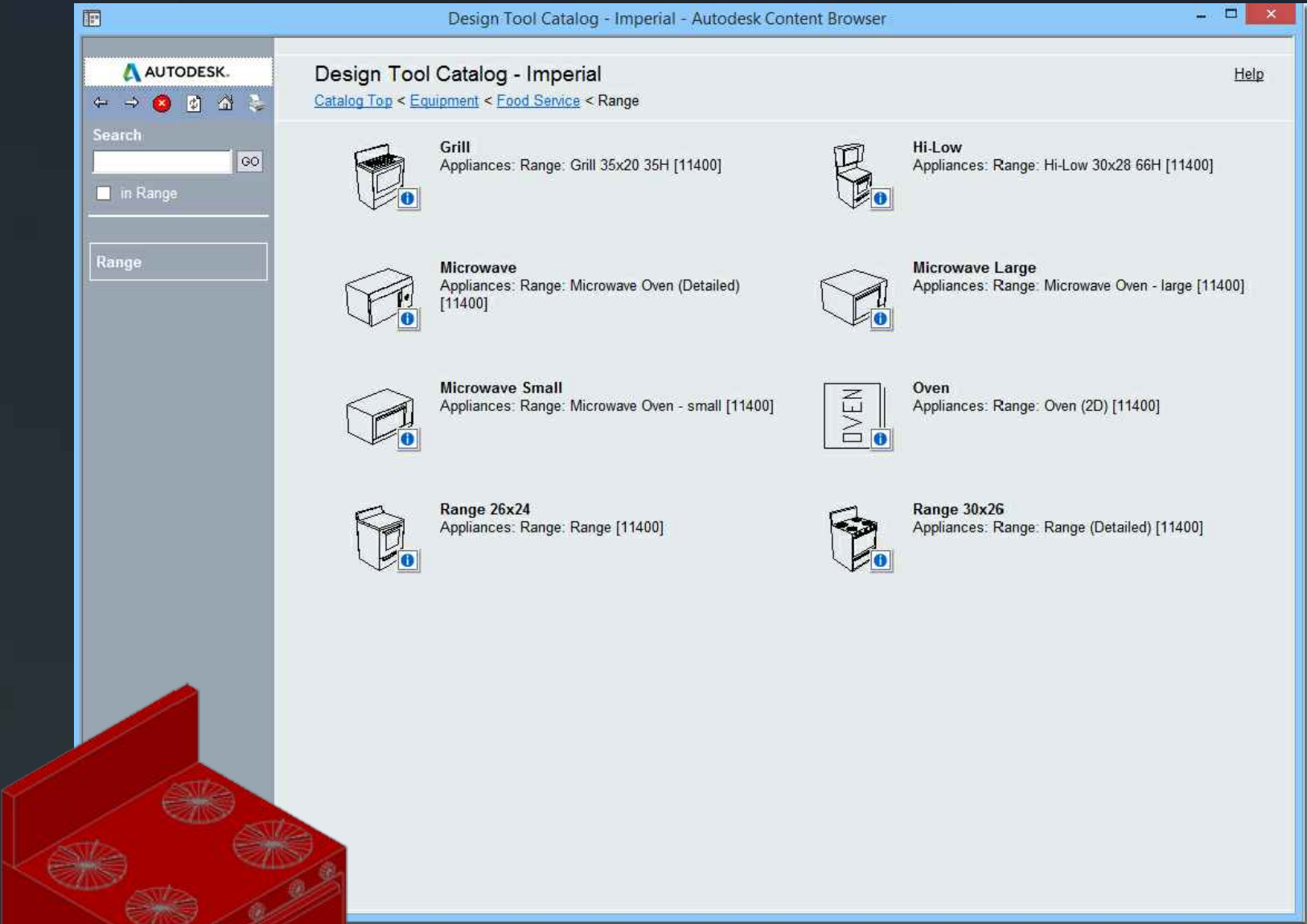
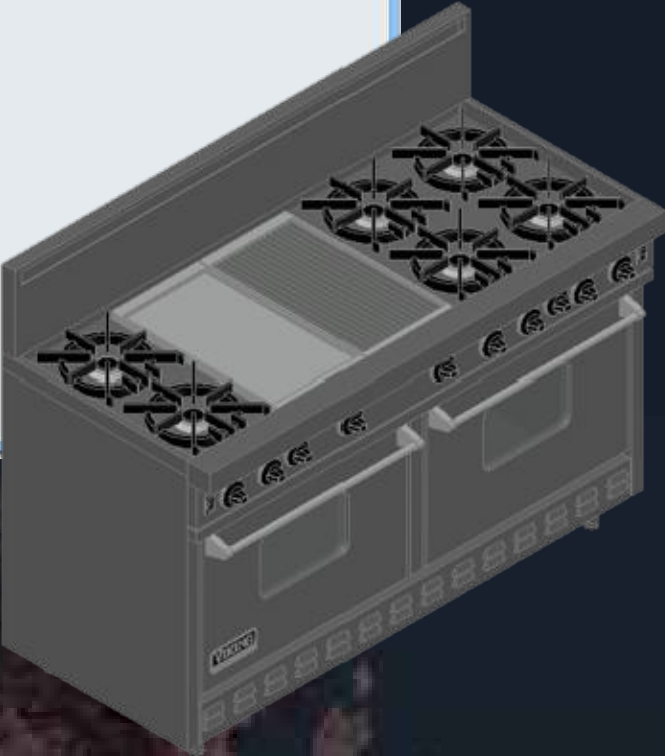


CONTENT CATALOG LIBRARIES FOR AutoCAD® ARCHITECTURE

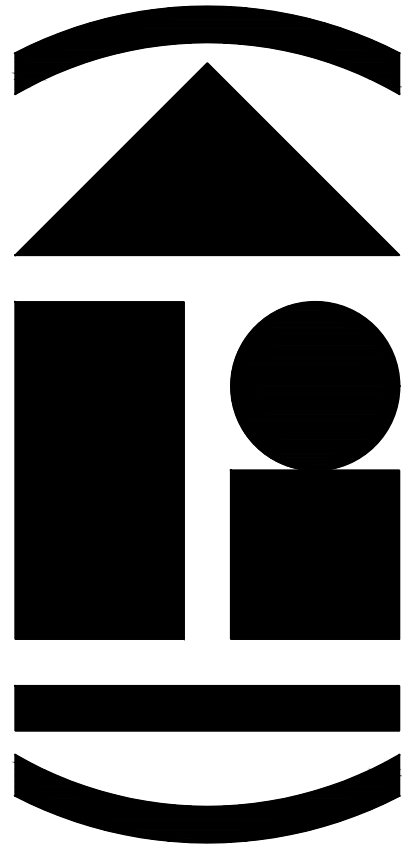
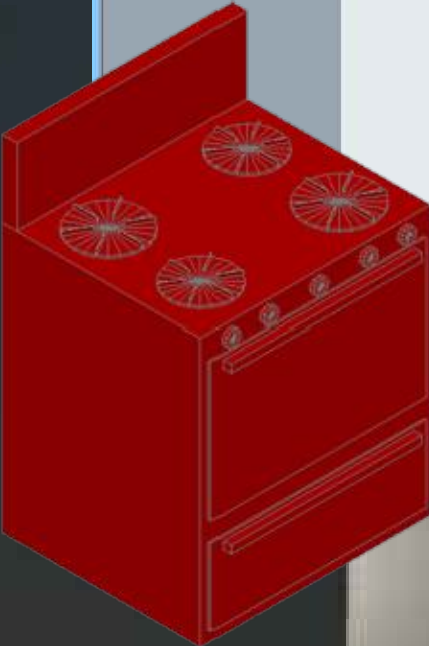
WE HAVE UPDATED, REPLACED AND/OR EXPANDED UPON NEARLY EVERY STOCK CATALOG LIBRARY ITEM (SOME OF WHICH DATE BACK TO THE EARLY 1990's)



CUSTOM CONTENT
BY ARCHIdigm



STOCK CONTENT



ARCHIdigm
AutoCAD® Architecture Content
SAN FRANCISCO, CA.
www.archidigm.com
info@archidigm.com

PROJECT:
SALOON
EXAMPLE PROJECT
AUTOCAD ARCHITECTURE

ISSUED FOR:
DEMONSTRATION

DATE: 6/11/24
SCALE: AS NOTED
DRAWING TITLE:
COVER PAGE

SHEET NO.
A0.0

A0.0 COVER PAGE.DWG

NUMEROUS CATALOGS FOR DIFFERENT TASKS

WE HAVE CONTENT CATALOGS FOR KITCHENS, BATHROOMS, DOORS, WINDOWS, FENCES, SITE AND MORE. SEE PRODUCT OVERVIEW DOCUMENTATION FOR FULL LISTS OF CONTENT. "KITCHEN CABINETS", FOR EXAMPLE, OFFERS SOLUTIONS FOR COMMERCIAL KITCHENS/BARS AND NUMEROUS RESIDENTIAL FIREPLACE TOOLS/MVBLOCKS IN ADDITION TO CABINETS.

Streets_Transportation_Private_Car_Sport_Koenigsegg_Agera

Streets_Transportation_Private_Car_Compact_Subaru_Impreza

Streets_Transportation_Private_Car_Nissan_Rogue

Streets_Transportation_Private_Pickup_Ford_F-150

Streets_Transportation_Private_Pickup_Ford_Bronco

Streets_Transportation_Private_Sailboat_38ft

Streets_Transportation_Private_Jetski_1

COMMERCIAL

Streets_Transportation_Commercial_Van_Sprinter

Streets_Transportation_Commercial_Truck_Fedex_1

DRIVEWAYS

streets_road_one_lane_private

streets_road_one_lane_private_gravel

streets_driveway_raised_curb

streets_driveway_raised_curb_cobblestone

SIDEWALKS AND CURBS

streets_sidewalk

No Curb or Gutter

streets_sidewalk_curb_gutter_Left

Curb and Gutter Cleanup Priorities = 2001

streets_sidewalk_curb_gutter_Right

Curb and Gutter Cleanup Priorities = 2002

streets_sidewalk_curb_gutter_Left_red_curb

Curb and Gutter Cleanup Priorities = 2001

C_STREET_SIGN_R15-1_RAIL_CROSSING

PAVEMENT MARKINGS

C_PAVEMENT_MARKINGS_STOP

C_PAVEMENT_MARKINGS_BICYCLE

C_PAVEMENT_MARKINGS_BIKE_LANE

C_PAVEMENT_MARKINGS_ACCESSIBILITY_WHITE

C_PAVEMENT_MARKINGS_ACCESSIBILITY_WHITE_BLUE

C_PAVEMENT_MARKINGS_SCHOOL

C_PAVEMENT_MARKINGS_ARROW_STRAIGHT

C_PAVEMENT_MARKINGS_ARROW_STRAIGHT_LEFT

Streets_Planting_Tree_Conifer_3

20ft tall Pine

Streets_Planting_Tree_Conifer_2

30ft tall

Streets_Planting_Tree_Conifer_4

18ft tall Pine

Streets_Planting_Tree_Deciduous_1_Cherry

Streets_Planting_Tree_Deciduous_2_Willow

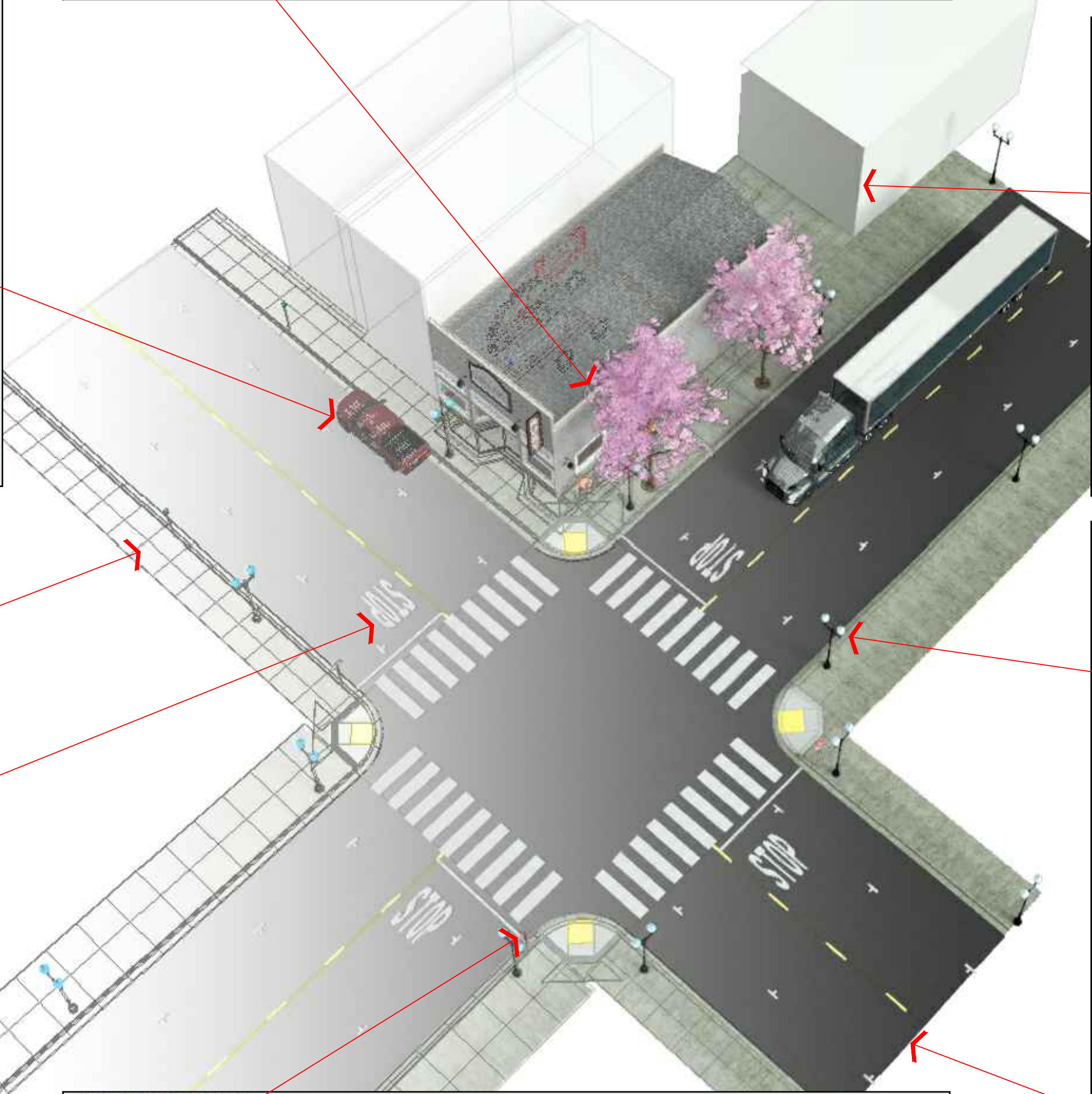
Streets_Planting_Tree_Deciduous_Aspen_1

Streets_Planting_Deciduous_Cherry_40ft_1

Streets_Planting_Deciduous_Maple_40ft_1

Streets_Planting_Deciduous_Maple_40ft_Fall_1

Streets_Planting_Tree_Evergreen_Eucalyptus



Streets_Building_Mass_Concrete

Streets_Building_Mass_Stucco_Grey

Streets_Building_Mass_White_Glossy

Streets_Building_Mass_Water_Pool

WALL STYLES

Streets_Building_Mass_Concrete_Slab_Stucco_Walls

Streets_Building_Mass_Stucco_Walls

ROOF SLABS

Streets_Building_Mass_Flat_Parapet

Flat Roof with Stucco Parapet Wall

STREET LIGHTS

streets_lighting_decorative_acorn_1

M/Block of Acorn Street Fixture

streets_lighting_decorative_acorn_2

Creates a Multi-view Block

streets_lighting_decorative_box_1

Creates a Multi-view Block

streets_lighting_decorative_box_1x2

Creates a Multi-view Block

streets_lighting_decorative_box_1x4

Creates a Multi-view Block

streets_lighting_decorative_cone_1

Creates a Multi-view Block

streets_lighting_decorative_cone_1x2

Creates a Multi-view Block

streets_lighting_decorative_cone_1x4

Creates a Multi-view Block

streets_lighting_decorative_globe_1

Creates a Multi-view Block

SIGNAGE AND STRIPING

SIGNS

C_STREET_SIGN_R1-1_STOP

C_STREET_SIGN_R3-1_NO_RIGHT_TURN

C_STREET_SIGN_R3-2_NO_LEFT_TURN

C_STREET_SIGN_R3-4_NO_U_TURN

C_STREET_SIGN_R3-5L_LEFT_TURN_ONLY

C_STREET_SIGN_R3-5R_RIGHT_TURN_ONLY

C_STREET_SIGN_R3-6L_LEFT_TURN_STRAIGHT_ONLY

STREETS

STREETS WITHOUT SIDEWALKS

streets_road_one_lane_country

streets_road_two_lane_country

streets_road_two_lane_country_double_stripe_passing

streets_road_two_lane_country_one_stripe

streets_road_two_lane_country_shoulder

streets_avenue_10ft_island

No Sidewalks

streets_avenue_10ft_island_bike_lane_parking

No Sidewalks

PLUMBING - UNDER COUNTER

I_PLUMB_SINK_3_COMPARTMENT_COMMERCIAL_27.5x58.75

I_PLUMB_SINK_3_COMPARTMENT_COMMERCIAL_27.5x90

I_PLUMB_COUNTER_COMMERCIAL_PARAMETRIC

I_PLUMB_DRAINBOARD_COMMERCIAL_12x21x34
12" Wide, 21" Deep, 34" High with 4" Splash

I_PLUMB_DRAINBOARD_COMMERCIAL_18x21x34
18" Wide, 21" Deep, 34" High with 4" Splash

I_PLUMB_DRAINBOARD_COMMERCIAL_24x21x34
24" Wide, 21" Deep, 34" High with 4" Splash

I_PLUMB_DRAINBOARD_COMMERCIAL_30x21x34
30" Wide, 21" Deep, 34" High with 4" Splash

I_PLUMB_DRAINBOARD_COMMERCIAL_36x21x34
36" Wide, 21" Deep, 34" High with 4" Splash

FLAT PANEL TELEVISIONS

WALL MOUNTED

Appliance_Television_HD_32

Appliance_Television_HD_37

Appliance_Television_HD_42

Appliance_Television_HD_46

Appliance_Television_HD_50

Appliance_Television_HD_55

Appliance_Television_HD_65_Samsung

NUMEROUS CATALOGS FOR DIFFERENT TASKS

OUR SITE CONTENT IN THE "STREETS" CATALOG PROVIDES RAPID IN-SITU PLACEMENT OF YOUR DESIGNS TO HELP YOU COMMUNICATE WITH YOUR CLIENTS.

WINDOWS - RECTANGULAR - WOOD

STANDARD SET

Pass Through - Rectangular - Wood - Trim
Pass Through (No Glass) Window with Trim

Picture - Rectangular - Wood - Trim
Picture Window with Trim

Single Hung - Rectangular - Wood - Trim
Single Hung Window with Trim

Double Hung - Rectangular - Wood - Trim
Double Hung Window with Trim

Single Casement - Rectangular - Wood - Trim
Single Casement Window with Trim

Single Casement - Rectangular - Wood - Trim Reverse - Trim
Single Casement Window, Out Swing, with Trim

Double Casement - Rectangular - Wood - Trim
Double Casement Window with Trim

GENERAL TOOLS - FLOOR SLABS

1ST FLOOR

Floor_Concrete

Floor_Concrete_8x10_Footing

Floor_Concrete_Sloped
Use this Slab for Sloped Conditions. Shrinkwrap Material and Slab Style Display Properties have been modified for optimum

Floor_Assembly_0.75_Sub-Floor_0.5_Tile_Marble

Floor_Assembly_0.75_Sub-Floor_0.5_Tile_Terra_Cotta

Floor_Assembly_0.75_Sub-Floor_0.5_Hardwood_Maple

Floor_Assembly_0.75_Sub-Floor_0.5_Hardwood_Dark

streets_sidewalks_driveway_2
Standard Driveway Ramp with 6" Curb at back

streets_sidewalks_driveway_10.5ft_deep
Standard Driveway For 10'-0" Sidewalk with Curb and Gutter.

streets_sidewalks_driveway_level_5ft_deep_2_sided
Zero Level Change Driveway For 5'-0" Sidewalk with Curb and Gutter. Useful with Parking Lots.

C_SIDEWALK_ADA_RAMP_CORNER_10FT_RADIUS

Streets Sidewalks Accessible Ramp D

Streets Sidewalks Accessible Ramp E

GRADES - MASS ELEMENTS

Streets_Grade_Concrete

Streets_Grade_Stone_Pavers_Interlocking_Gray

PAVEMENT STRIPING

streets_pavement_paint_white_4in_double

streets_pavement_paint_white_4in

streets_pavement_paint_white_4in_passing

streets_pavement_paint_white_crosswalk_piano_keys_96w

streets_pavement_paint_white_4in_parallel_parking

streets_pavement_paint_white_12in_double Crosswalk

streets_pavement_paint_white_12in

streets_pavement_paint_yellow_4in_double



6x

Column_Wood_D.F._6x6
Creates a structural column.

Beam_Wood_D.F._6x6
Creates a structural beam.

Column_Wood_D.F._6x12
Creates a structural column.

Beam_Wood_D.F._6x12
Creates a structural beam.

12x

Column_Wood_D.F._12x12
This large colum style shows how you can use the generic 1 unit square Member Shape to quickly create any Square Member Style. Under the Member Style, modify the Scale

METAL

Column_Steel_Hollow_4x4x0.125
Creates a structural column.

Beam_Steel_Hollow_4x4x0.125
Creates a structural beam.

Streets_Transportation_Commercial_Truck_Freightliner_M2

Streets_Transportation_Commercial_Truck_and_Trailer

Streets_Transportation_Commercial_Truck_and_Flatbed_Trailer

Streets_Transportation_Commercial_Truck

Streets_Transportation_Commercial_Trailer_52

Streets_Transportation_Commercial_Trailer_Flatbed_52

Streets_Transportation_Commercial_Trailer_52_Freestanding

Streets_Transportation_Commercial_Trailer_Flatbed_52_Freestanding

Streets_Transportation_Commercial_Bus_Transit_BYD

Streets_Transportation_Commercial_Forklift

R

S

U

W

Y

T

V

X

Z

About Tags
The Beam and Column Tags will Report "COLUMN" by Default. Go to Extended Data on Properties Palette to Change Name under "TYPE". Drop-down List offers

Column Tag
Creates a column tag based on the member type and style.

StandardGridBubble_3_Digits

Node Anchor
Attaches objects to nodes on layout curves, layout grids, and layout volumes.

Column Grid
Creates a column grid on which you can anchor structural columns. Use Cell Anchor Tool to Copy a Column to All Grid Intersections. Use Node Anchor Tool

Beam Tag
Creates a beam tag based on the member style.

StandardGridBubble
Use "Re-import 'StandardGridBubble' Multi-View Block Definition" to update the default Grid Bubble MvBlock in your drawing file. This one comes with an AecPolygon

Cell Anchor
Attaches objects to cells on layout grids and layout volumes.

Column Curve
Defines an object as a layout curve on which to anchor objects. Use Node Anchor Tool to Copy a Column to Nodes.

Column Grid Dialog
Activates the Enhanced Column Grid Dialog with more Sophisticated Column Grid Configuration Features. Import and Export of Column Grid Configurations via .xls

I_Appl_Dryer_Samsung_27W
Heat Pump Electric Dryer, Front Loading, 7.8 Cu Ft

I_Appl_Dryer_Whirlpool_27W

RESIDENTIAL STACKED UNITS

I_Appl_Washer_Dryer_Combination_Whirlpool_24W
Fixed Stacked Washer and Dryer Unit

I_Appl_Washer_Drер_Stacked_LG_24W

I_Appl_Washer_Dryer_Stack_Whirlpool_27W
DRYER STACKED ON TOP OF WASHER

I_Appl_Washer_Dryer_Combination_Whirlpool_27W
Fixed Stacked Washer and Dryer Unit

I_Appl_Washer_Dryer_Samsung_27W_Stacked
Stacked Washing Maching and Dryer

COMMERCIAL UNITS

I_Appl_Washer_Spped_Queen_26W
Commercial Washing Machine

NUMEROUS CATALOGS FOR DIFFERENT TASKS

OUR WALL STYLES OFFER GRAPHIC CONFIGURATIONS WE BELIEVE ARE MORE USER FRIENDLY WITH THINGS LIKE LAYER CONTROL FOR FOOTING LINEWORK.

COLUMNS - STRUCTURAL

COLUMNS - POSTS & FOOTINGS

Column_Generic_Footing_Pad_Pier_12x12_Taper_8x8_Post_4x4
Square 12 Inch by 12 Inch Concrete Pier Pad with Taper to 8 Inch by 8 Inch Footing and 3.5 Inch by 3.5 Inch Post. Typically for Existing Conditions.

Column_Generic_Footing_Pad_24x24_Footing_Post_4x4
Square 24 Inch by 24 Inch Concrete Pad and 3.5 Inch by 3.5 Inch Post

Column_Generic_Footing_Pad_24x24_Footing_10x10_Post_4x4
Square 24 Inch by 24 Inch Concrete Pad with 10 Inch by 10 Inch Footing

Column_Generic_Footing_Pad_24x24_Footing_10x10_Post_4x4
Square 24 Inch by 24 Inch Concrete Pad with 10 Inch by 10 Inch Footing and 3.5 Inch by 3.5 Inch Post

Column_Generic_Round_Footing_12_Post_4x4
Roung 12 Inch Diameter Pier Footing with 3.5x3.5 Post.

Column_Multiple_4x4_72_On_Center_Footings
Curtain Wall Style Configured to Create Multiple Square 24 Inch by 24 Inch Concrete Pad with 10 Inch by 10 Inch Footing and 3.5 Inch by 3.5 Inch Post.

Column_Multiple_4x4_72_On_Center_Footings
Curtain Wall Style Configured to Create Multiple Square 24 Inch by 24 Inch Concrete Pad with 10 Inch by 10 Inch Footing and 3.5 Inch by 3.5 Inch Post

Concrete - Saddled - Private
Concrete stair (solid slab)

Concrete - Housed - Private
Concrete stair (solid slab)

Wood - Housed - Center Stringer - Private

Wood - Housed - 3.5W - Center Stringer - Private
3.5x13 Edge Stringers

Wood - Saddled - Center Stringer - Private

Wood - Saddled - No Risers - Private
Existing Conditions - Not to Code. Add Custom Railing Style "Fence - Stair - Open - Riser - Code - Compliance" to Make Code Compliant.

Fence - Stair - Open - Riser - Code - Compliance
Highly Customized Style Designed to Demonstrate Alternative Uses for Railing Styles. Adds a Block

Exterior_New_1.5_Brick_Veneer_2_Sides
Exterior New Stud Wall with 1 1/2" Brick Veneer Siding 1/2" Mortar 1/2" Plywood on Both Sides

Exterior_New_1.5_Stone_Veneer_2_Sides
Exterior New Stud Wall with 1 1/2" Stone Veneer Siding 1/2" Mortar 1/2" Plywood on Both Sides

Exterior_New_0.5_Stucco_2_Sides
Exterior New Stud Wall with 1/2" Stucco Siding 1/2" Plywood on Both Sides

FOUNDATION - EXISTING

Foundation_Existing_16x8_Footing_1.5x5.5_Sill_Plate_1.5x9.25_Rim_Joist
Existing Concrete Retaining Wall with 16"x8" Footing Variable Width Stemwall 2x6 Sill Plate and 2x10 Rim Joist

Foundation_Existing_16x8_Footing_1.5x5.5_Sill_Plate
Existing Concrete Retaining Wall with 16"x8" Footing Variable Width Stemwall and 2x6 Sill Plate

Foundation_Existing_24x14_Footing_1.5x5.5_Sill_Plate
Existing Concrete Retaining Wall with 24"x14" Footing Variable Width Stemwall and 2x6 Sill Plate

Foundation_Existing_24x14_Footing_1.5_Veneer_0.5_Mortar_Cap
Existing Concrete Retaining Wall with 24x14 Footing Variable Width Stemwall and Cap. Mortar and Veneer on Each Side

FOUNDATION - NEW

Foundation_New_16x8_Footing_1.5x5.5_Sill_Plate_1.5x9.25_Rim_Joist
New Concrete Retaining Wall with 16"x8" Footing Variable Width Stemwall 2x6 Sill Plate and 2x10 Rim Joist

GENERAL TOOLS - FLOOR SLABS

1ST FLOOR

Floor_Concrete

Floor_Concrete_8x10_Footing

Floor_Concrete_Sloped
Use this Slab for Sloped Conditions. Shrinkwrap Material and Slab Style Display Properties have been modified for optimum Hatch Pattern Display in Plan Views. Note that

Floor_Assembly_0.75_Sub-Floor_0.5_Tile_Marble

Floor_Assembly_0.75_Sub-Floor_0.5_Tile_Terra_Cotta

Floor_Assembly_0.75_Sub-Floor_0.5_Hardwood_Maple

Floor_Assembly_0.75_Sub-Floor_0.5_Hardwood_Dark

PROPOSED BASEMENT PLAN

1/4" = 1'-0"

Interior - Hinged - Single - Trim - ADA - Women - Left - Push Restroom Door

Interior - Hinged - Single - Trim - ADA - Men - Left - Pull Restroom Door

Interior - Hinged - Single - Trim - ADA - Men - Right - Push Restroom Door

Interior - Hinged - Single - Trim - ADA - Men - Right - Pull Restroom Door

Interior - Hinged - Single - Trim - ADA - Men - Left - Push Restroom Door

Exterior - Hinged - Single - Lever - Closer - Panic Single hinged entry door with Panic and Closer Hardware

Exterior - Hinged - Single - Lever - Closer - Panic - Narrow Half Vision Lite Single hinged entry door with Panic and Closer Hardware

Interior - Hinged - Double - Lever - Closer - Panic Restroom Door

Exterior - Hinged - Double - Lever - Closer - Panic Double hinged entry door with Panic and Closer Hardware

Exterior - Hinged - Double - Lever - Closer - Panic - Narrow Half Vision Lite Double hinged entry door with Panic and Closer Hardware

HINGED - ENTRY - SIMPLE PROFILES

Booth Seating

commercial_bar_surface_wood

commercial_low_wall
Low Wall with 5/8" Gyp each side and on top

commercial_bar_top

commercial_bar_wall_x_top_ADA

commercial_bar_wall_x_top

Shelves

commercial_bar_wall_2_face_cap
Bar Wall with Facing on Both Sides

BOOTH TOOLS

I_Furn_Chair_Bar_Stool_Commercial_1
Commercial Bar Stool

I_Furn_Chair_Bar_Stool_Country_1_Wood
Commercial Bar Stool

I_Furn_Chair_Bar_Stool_Country_1_Black
Commercial Bar Stool

I_Furn_Chair_Bar_Stool_Country_1_White
Commercial Bar Stool

I_Furn_Chair_Bar_Stool_Country_1_Chrome_Satin
Commercial Bar Stool

I_Furn_Chair_Dining_Ladder_Back
Commercial Bar Stool

Bar Stool Array
Use this Tool to create an Array of Bar Stools 24 inches apart. You can use the Apply To option and set it to "Referenced Base Curve" to follow a Polyline shape.

CHAIRS

I_Furn_Table_Round_Set_24x42H_Commercial_Chrome_Satin
Restaurant Bar Table Set with 2 Chairs

I_Furn_Dining_Set_2_24x36_Ladder_Chairs
Restaurant 2 Top Table Set

I_Furn_Dining_Set_2_30x48_Ladder_Chairs
Restaurant 2 Top Table Set

I_Furn_Table_Round_Set_30x42H_Commercial_Chrome_Satin
Restaurant Bar Table Set with 2 Chairs

I_Furn_Table_Round_Set_36x42H_Commercial_Chrome_Satin
Restaurant Bar Table Set with 2 Chairs

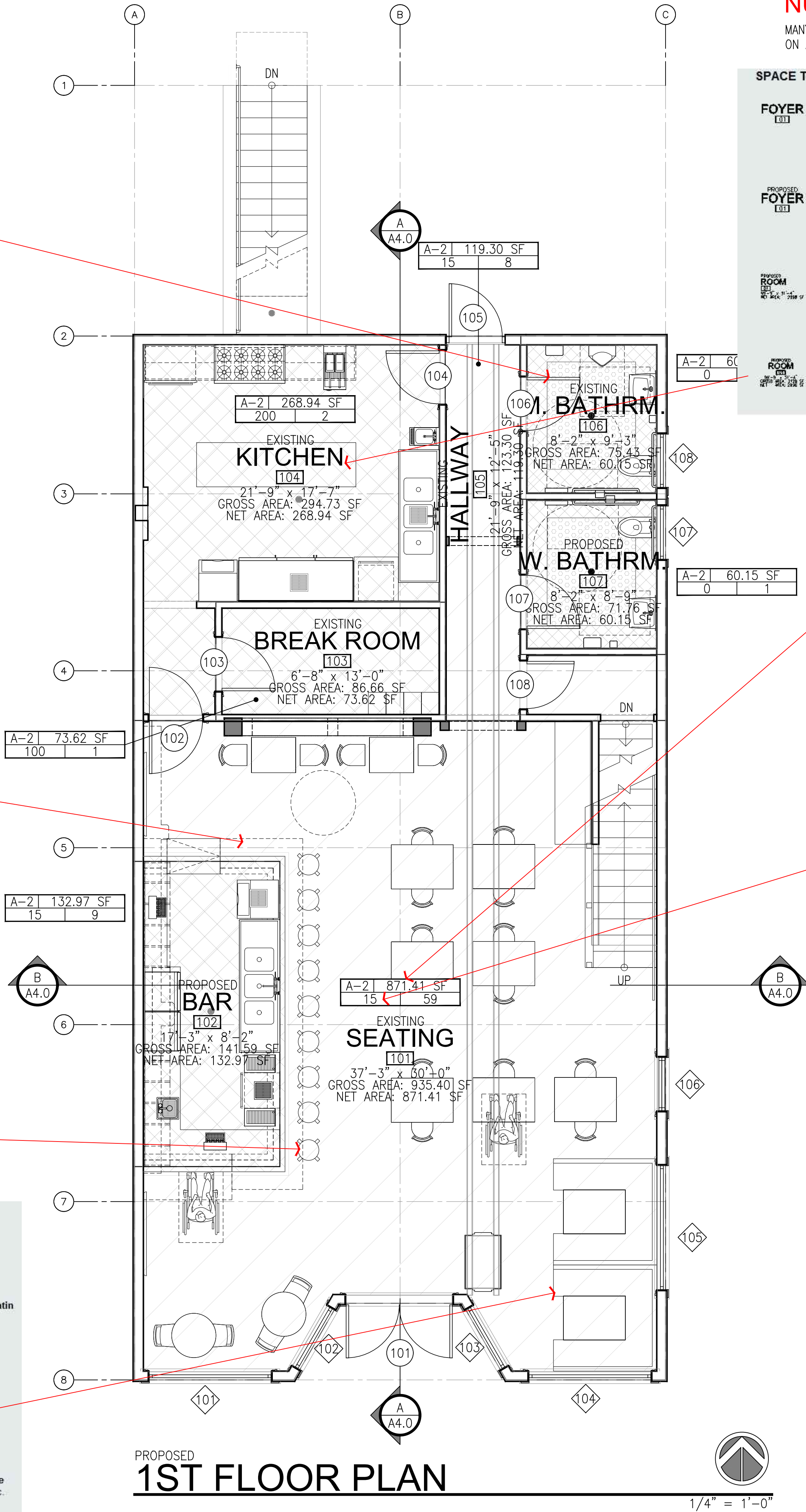
I_Furn_Dining_Set_8_32x84_Ladder_Chairs
Restaurant Long Table Set with 8 Chairs

I_Furn_Table_Booth_Set_70x72_Commercial_Beige
Restaurant Booth Table Set with Rectangular Table. Beige Fabric.

I_Furn_Table_Booth_Set_70x72_Square_Commercial_Beige
Restaurant Booth Table Set with Rectangular Table. Beige Fabric.

TABLE SETS

BOOTHS



NUMEROUS CATALOGS FOR DIFFERENT TASKS

MANY OF OUR MYBLOCK OPTIONS, INCLUDING TAGS, HAVE MASKS BASED ON AEPOLGONS FOR IMPROVED LEGIBILITY IN PLAN VIEWS

SPACE TAGS

FOYER
101

Space Tag - Basic - 2
Tag has Space/Room Name and Project Based Floor Level ID Space/Room Number

FOYER
101

Space Tag - Basic - 2 - Small
Tag has Space/Room Name and Project Based Floor Level ID Space/Room Number. Small Text Height.

PROPOSED
FOYER
101

Space Tag - Basic - 3
Tag has Classification, Space/Room Name and Project Based Floor Level ID Space/Room Number

PROPOSED
FOYER
101

Space Tag - Basic - 3 - Small
Tag has Classification, Space/Room Name and Project Based Floor Level ID Space/Room Number. Small Text Height

PROPOSED
ROOM
101

Space Tag - Standard - Right
Tag has Status, Space/Room Name, Project Based Floor Level ID Space/Room Number, Net Area and Space Dimensions

PROPOSED
ROOM
101

Space Tag - Standard - Centered
Tag has Status, Space/Room Name, Project Based Floor Level ID Space/Room Number, Net Area and Space Dimensions

PROPOSED
ROOM
101

Space Tag - Standard + Gross Area - Centered
Tag has Status, Space/Room Name, Project Based Floor Level ID Space/Room Number, Net Area, Gross Area and Space Dimensions

PROPOSED
ROOM
101

Space Tag - Occupancy
Space Tag for Occupancy Calculations.

PROPERTIES

Space

CLASSIFICATION

GT_Occupancy_Group
A-2

GT_Status_Basic
By style

DOCUMENTATION

Hyperlink

Notes

Reference docume...
(0)

PROPERTY SETS

GT_Space_Objects_Standard
SEATING

GT_Space_Objects_Occupancy
Max_Occupancy_Lo...
49
NetArea
871.41 SF
Number_of_Exits
2
Occupancy_Group
A-2
Occupant_Load_Fac...
15
Occupants
59

Select Classification

Unspecified*

GT_Occupancy_Group

A - Assembly

A-1 - Fixed Seating - Movie Theater, Concert Hall, etc.

A-2 - Fixed Seating - Restaurant, Club, etc.

A-3 - Worship, Recreation, Amusement and other Assembly uses

A-4 - Indoors - Arena, Skating Rink, Swimming Pool, etc.

A-5 - Outdoors - Stadium, Bleacher, Grandstand, etc.

B - Business - Office, Bank, Higher Education, Gyms, etc.

E - Educational

F - Factory

H - High Hazard

I - Institutional

M - Merchandise - Department Store, Drug Store, Retail, etc.

L - Laboratories

C - Organized Camp

R - Residential

S - Storage

U - Utility

DATA YOU SUPPLY BASED ON LOCAL BUILDING CODES. SEE SHEET-A5.0 FOR CORRESPONDING TABLE.

ARCHIdigm

AutoCAD® Architecture Content

SAN FRANCISCO, CA.

www.archidigm.com

info@archidigm.com

PROJECT: SALOON

EXAMPLE PROJECT

AUTOCAD ARCHITECTURE

ISSUED FOR:

DEMONSTRATION

DATE: 6/11/24

SCALE: AS NOTED

DRAWING TITLE:

1ST FLOOR PLAN

SHEET NO.

A2.1

A2.1 1ST FLOOR PLAN.DWG

FENCES - RAILINGS

WOOD

Fence - Guardrail - Cable 1 - Edge Mount - 4x4 Posts
Wood Square Posts - Cable Rail - Edge Mounted - Bolts

Fence - Guardrail - Cable 1 - Edge Mount - 4x4 Posts - Offset Corners
Wood Square Posts - Cable Rail - Edge Mounted - Custom Profile for Corners - Offset Posts

Fence - Guardrail - Wood - Victorian - 1 - Guardrail
Wood - Guardrail Only - Detailed Balusters - Newel Posts

Fence - Guardrail - Wood - Victorian - 1
Wood - Stair Only - Detailed Balusters - Newel Posts

Fence - Guardrail - Balusters - Edge Mount - 4x4 Posts - Left
Square Posts - Edge Mounted - Center Rails

Fence - Guardrail - Balusters - Edge Mount - 4x4 Posts
Square Posts - Edge Mounted - Center Rails

Fence - Guardrail - Balusters 2 - Edge Mount - 4x4 Posts
Square Posts - Edge Mounted - Edge Rails

Fence - Guardrail - Cable 1 - Edge Mount - Stairs - Left
Square Posts - Edge Mounted - For Stairs - Left Side

Fence - Handrail - Round - Wall Mount - Left
Code Compliant Wall Mounted Grab Bar

Fence - Handrail - Round - Wall Mount
Code Compliant Wall Mounted Grab Bar

METAL - FOR GUARDRAILS

Fence - Guardrail - Pipe

Fence - Guardrail with X-brace
Square Metal or Wood Posts and top Rail. Posts @ 3'-0" (36") High. Note: This Style comes from an article on ARCHIdigm.com and illustrates the use of Mass Element Inserts for cool effects.

Fence - Guardrail - Cable 1
Square Posts - Surface Mounted

Fence - Guardrail - Cable 1 - Edge Mount
Square Posts - Edge Mounted

Fence - Guardrail - Cable 1 - Round Posts
Round Posts - Surface Mounted

Fence - Guardrail - Cable 1 - Round Posts - Extensions
Round Posts - Surface Mounted - Extensions

Floor_Assembly_0.5_Sheet_Rock_0.75_Sub-Floor_0.5_Tile_Marble

Floor_Assembly_0.5_Sheet_Rock_0.75_Sub-Floor_0.5_Hardwood_Maple

DEMOLISH

Demolish Slabs Instructions
Before using Demolish Tools, set their Layer Properties to your Layer Key for "Demo" To use Tool, right-click over tool and select "Apply Tool Properties to" Slab. Then, Select a Slab Object in

Floor_Demolished

TOOLS

Assign Floor Slab Edge Styles
Import and Assign Custom Slab Edge Styles to Match Wall Finishes

Slab Edge Styles
Activates Slab Edge Style Dialog

Title Mark - Sheet View
Annotatively Scaled Dynamic Block with North Arrow On/Off

TAGS

Revision Cloud
Revision Cloud Set to Rectangular Shape. Symbol has AecPolygonStyle as Mask

Room Label Block
Simple Label Block with Attributes and Drop-down Fields.

Floor Slab Room Label Tag
Slab Tag with Drop-down List for Prefix and Name. Tag reads Floor Finish by Material Definition Style. Tag reads Area in Square Feet.

Window Size
Basic Width x Height Tag for Windows.

Door Size
Basic Width x Height Tag for Doors.

Window Size and Area
Basic Width x Height Tag for Windows with Area Value

Label - MvBlock Objects
Adds a Single Line Tag for Labeling an MvBlock.

Label - MvBlock Styles
Adds a Single Line Tag for Labeling an MvBlock - set inside MvBlock Style.

FLAT PANEL TELEVISIONS

WALL MOUNTED

Appliance_Television_HD_32

Appliance_Television_HD_37

Appliance_Television_HD_42

Appliance_Television_HD_46

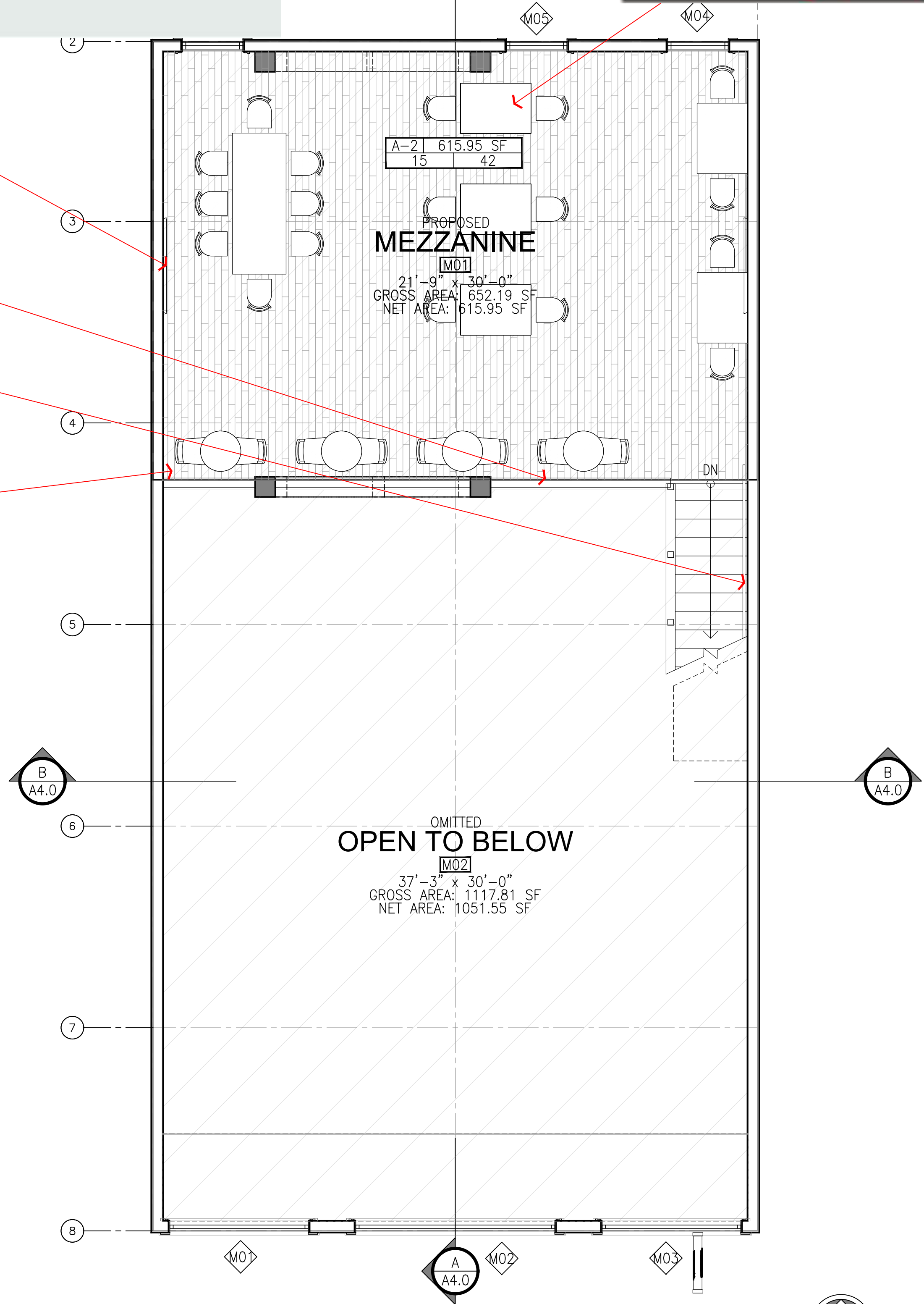
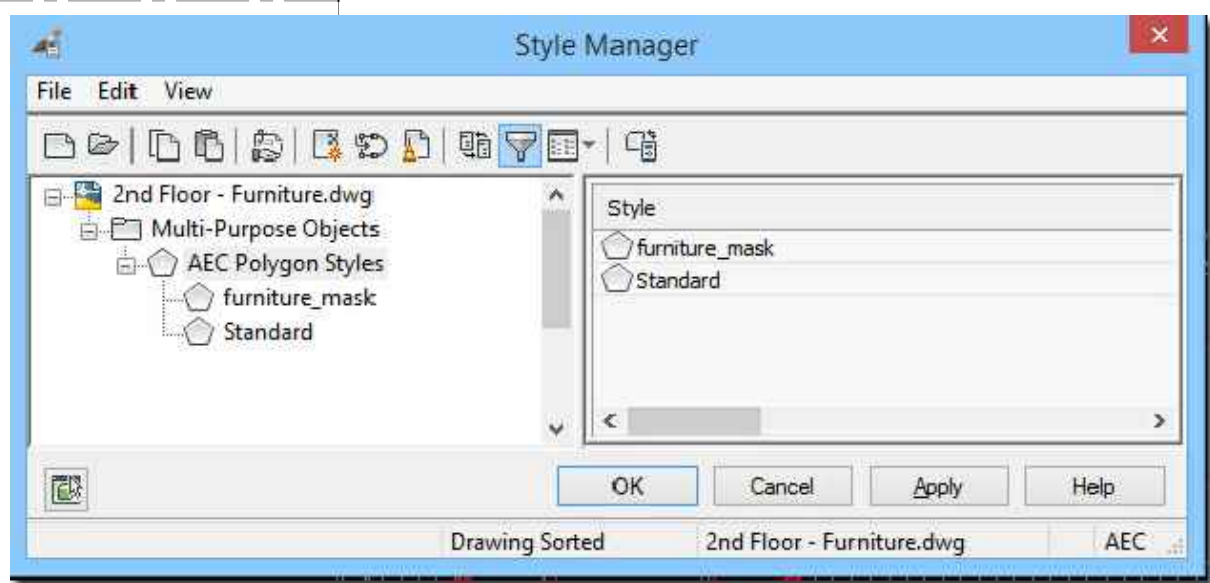
Appliance_Television_HD_50

Appliance_Television_HD_65

Appliance_Television_HD_65_Samsung

NUMEROUS CATALOGS FOR DIFFERENT TASKS

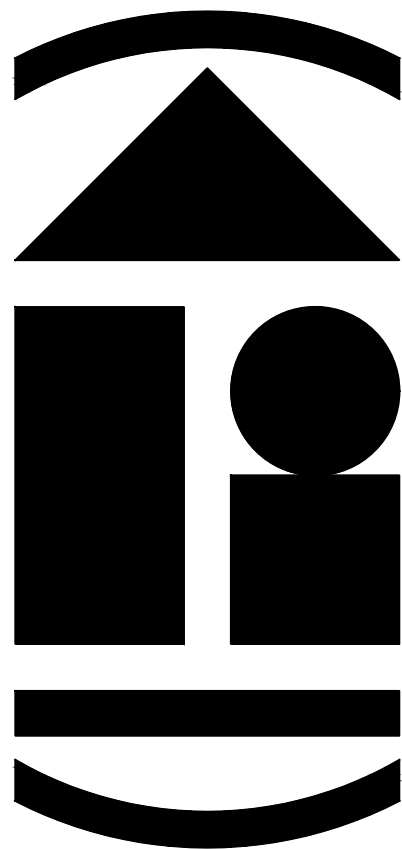
MANY OF OUR MVBLOCK OPTIONS, INCLUDING TAGS, HAVE MASKS BASED ON AECPOLYGONS FOR IMPROVED LEGIBILITY IN PLAN VIEWS



PROPOSED 2ND FLOOR PLAN



1/4" = 1'-0"



ARCHIdigm
AutoCAD® Architecture Content
SAN FRANCISCO, CA.
www.archidigm.com
info@archidigm.com

PROJECT: **SALOON**
EXAMPLE PROJECT
AUTOCAD ARCHITECTURE

ISSUED FOR:
DEMONSTRATION

DATE: 6/11/24

SCALE: AS NOTED

DRAWING TITLE:

**2ND FLOOR
PLAN**

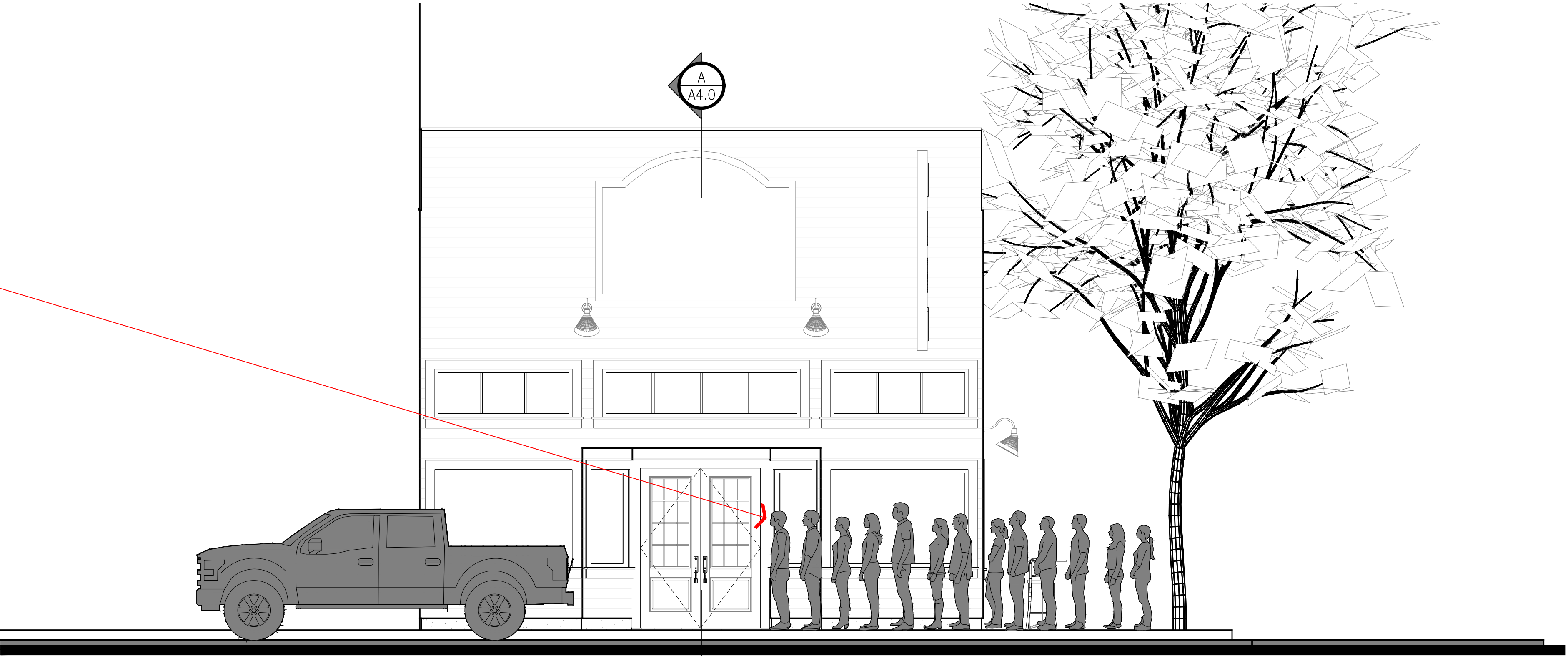
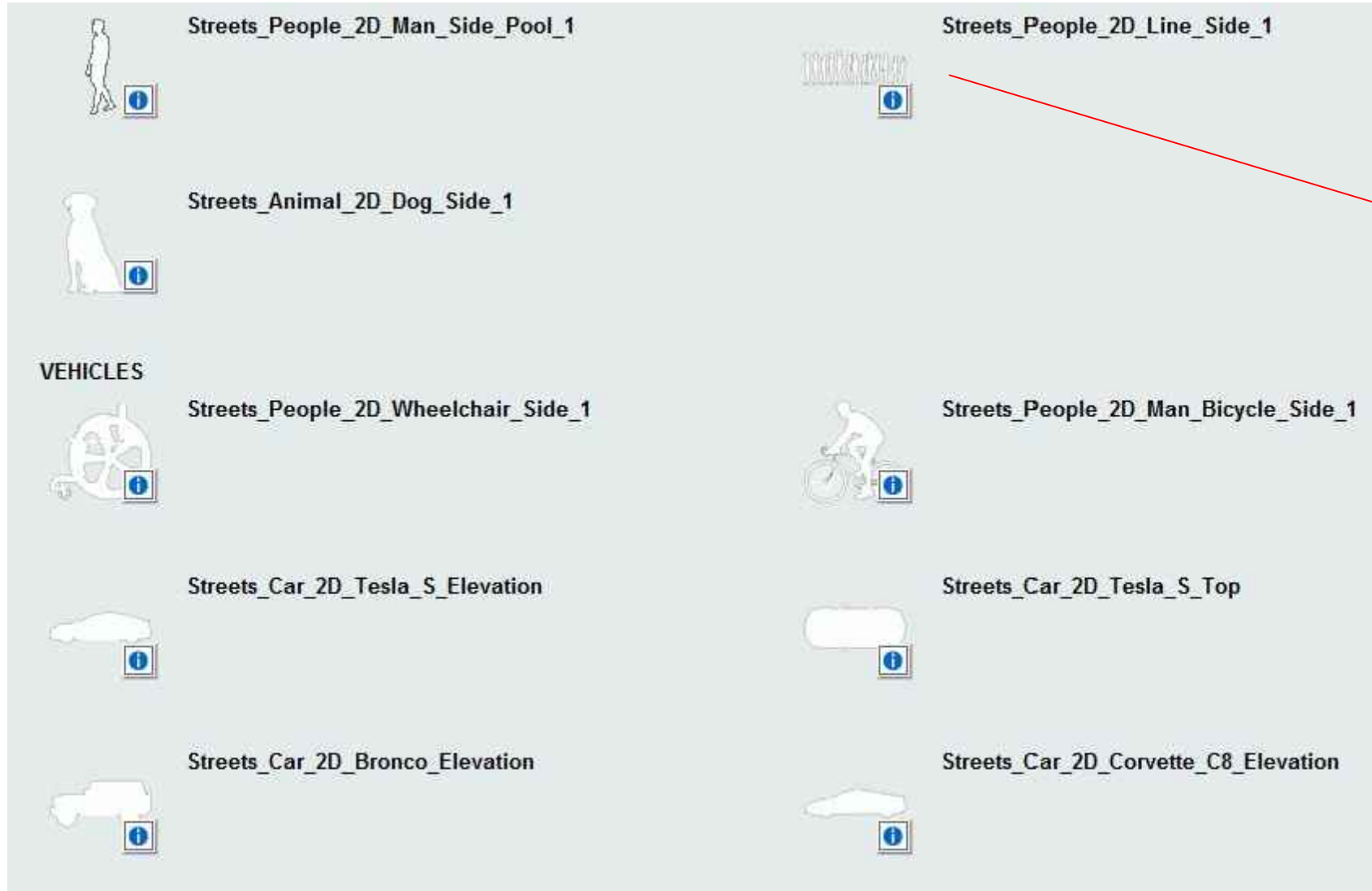
SHEET NO.

A2.2

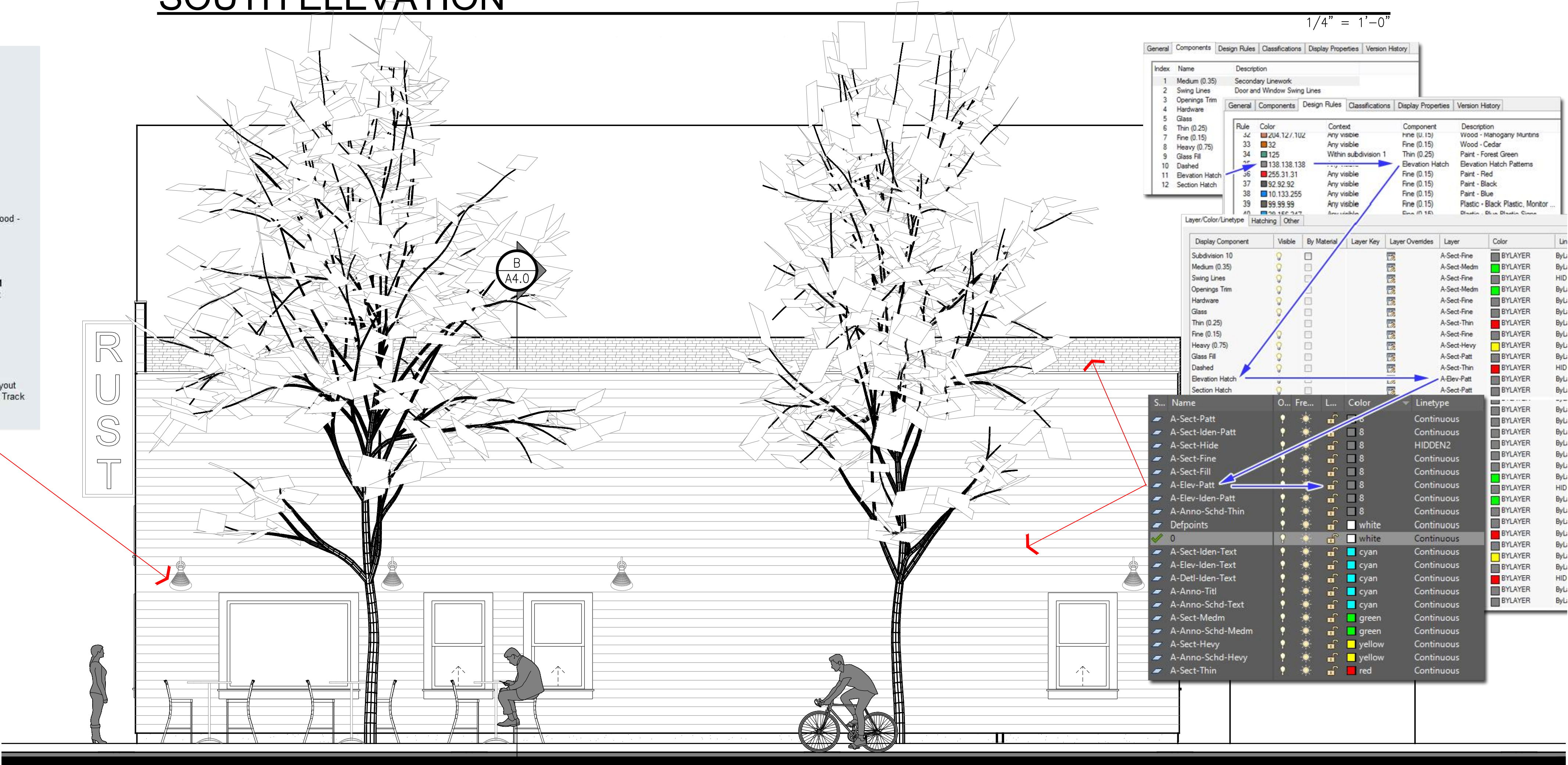
A2.2 2ND FLOOR PLAN.DWG

NUMEROUS CATALOGS FOR DIFFERENT TASKS

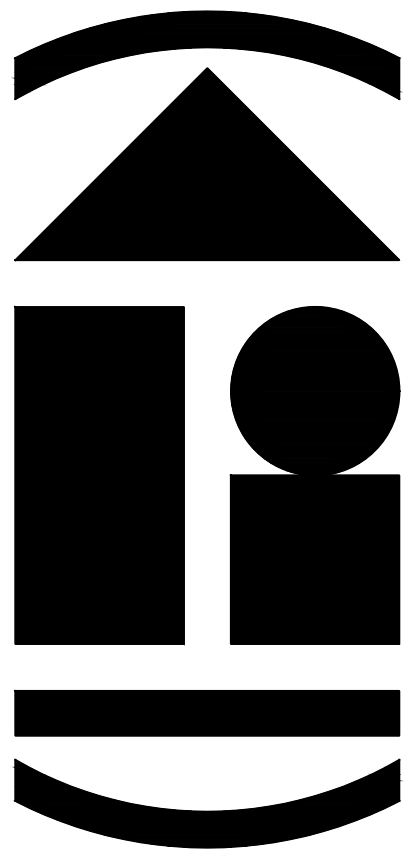
OUR 2D "CLIP-ART" MVBLOCKS COME WITH TWO BLOCKS: ONE FOR LINEWORK AND ONE FOR AN OUTLINE MASK BASED ON AN AECPOLYGON STYLE. FILL STYLE CAN BE CONTROLLED OR TURNED OFF. OUR CUSTOMIZED MATERIAL DEFINITION STYLES AND CORRESPONDING 2D SECTION/ELEVATION STYLES OFFER NUMEROUS LAYER PROPERTY CONTROLS FOR BETTER SECTION AND ELEVATION RESULTS.



PROPOSED
SOUTH ELEVATION



PROPOSED
EAST ELEVATION



ARCHIdigm
AutoCAD® Architecture Content
SAN FRANCISCO, CA.
www.archidigm.com
info@archidigm.com

PROJECT:
SALOON
EXAMPLE PROJECT
AUTOCAD ARCHITECTURE

ISSUED FOR:
DEMONSTRATION

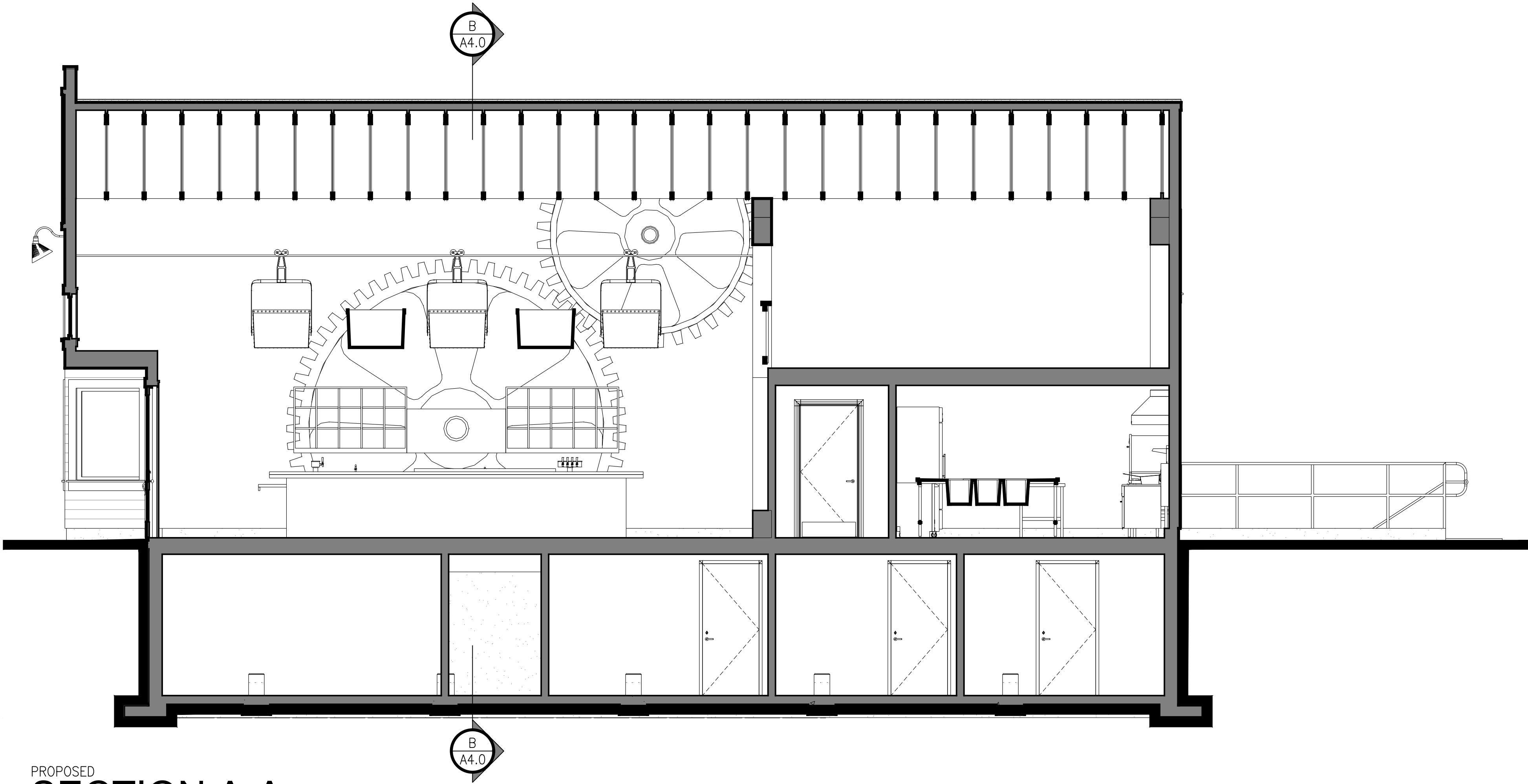
DATE: 6/11/24
SCALE: AS NOTED
DRAWING TITLE:
ELEVATIONS

SHEET NO.
A3.0

A3.0 ELEVATIONS.DWG

NUMEROUS CATALOGS FOR DIFFERENT TASKS

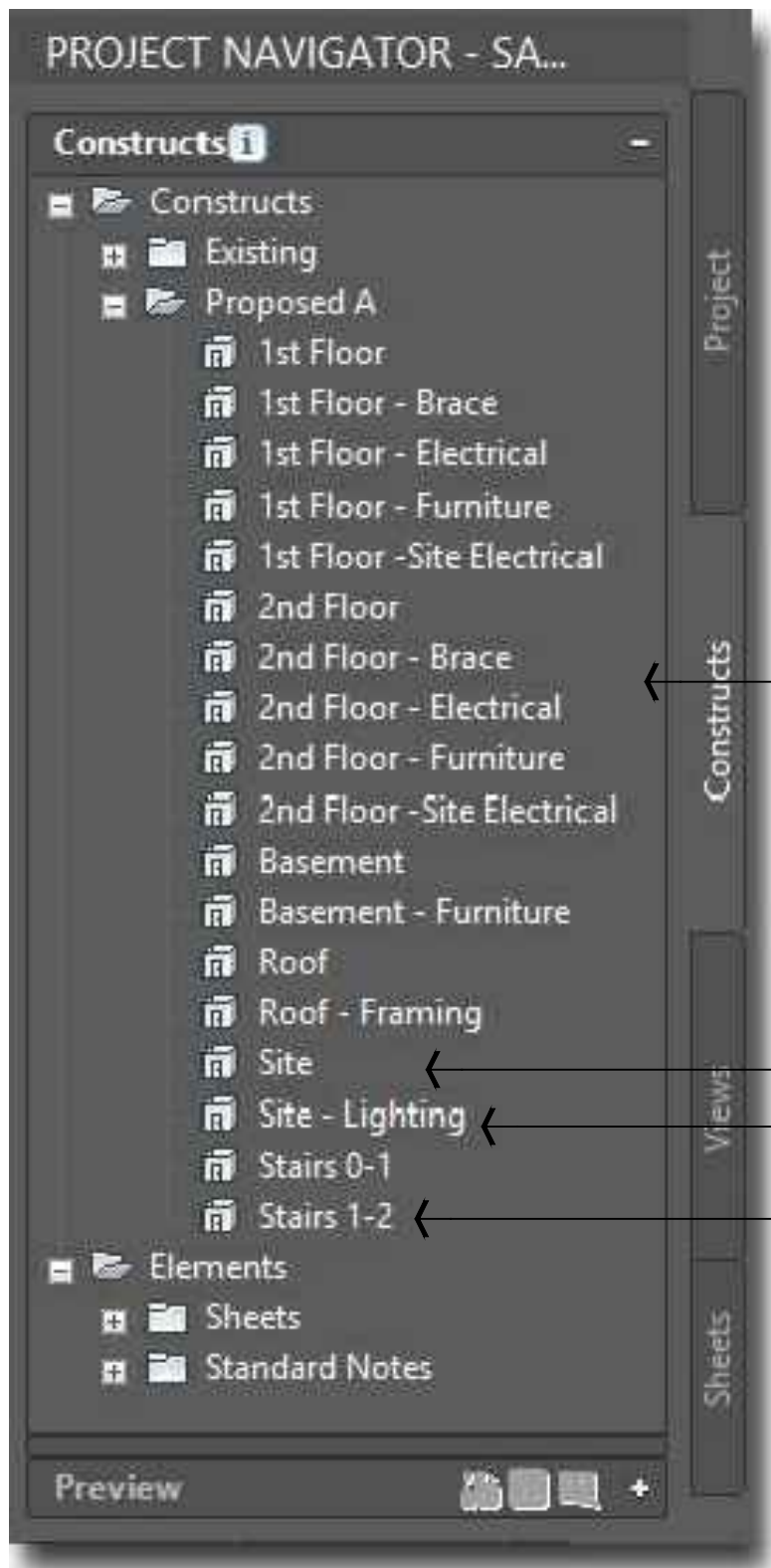
SECTIONS CAN BE A SIGNIFICANT CHALLENGE BECAUSE THEY OFTEN SHOW THE SUM OF ALL BUILDING COMPONENTS. IN OUR GENERAL TOOLS KIT WE CREATED A VARIETY OF TRUSS TOOLS BASED ON DOOR/WINDOW ASSEMBLY STYLES (WE CALL THEM GRAPHIC TRUSSES).



PROPOSED
SECTION A-A

1/4" = 1'-0"

USING TOO MUCH HIGHER QUALITY CONTENT CAN BE A DRAIN ON SYSTEM RESOURCES SO WE RECOMMEND THAT YOU ORGANIZE YOUR WORK ACCORDINGLY.

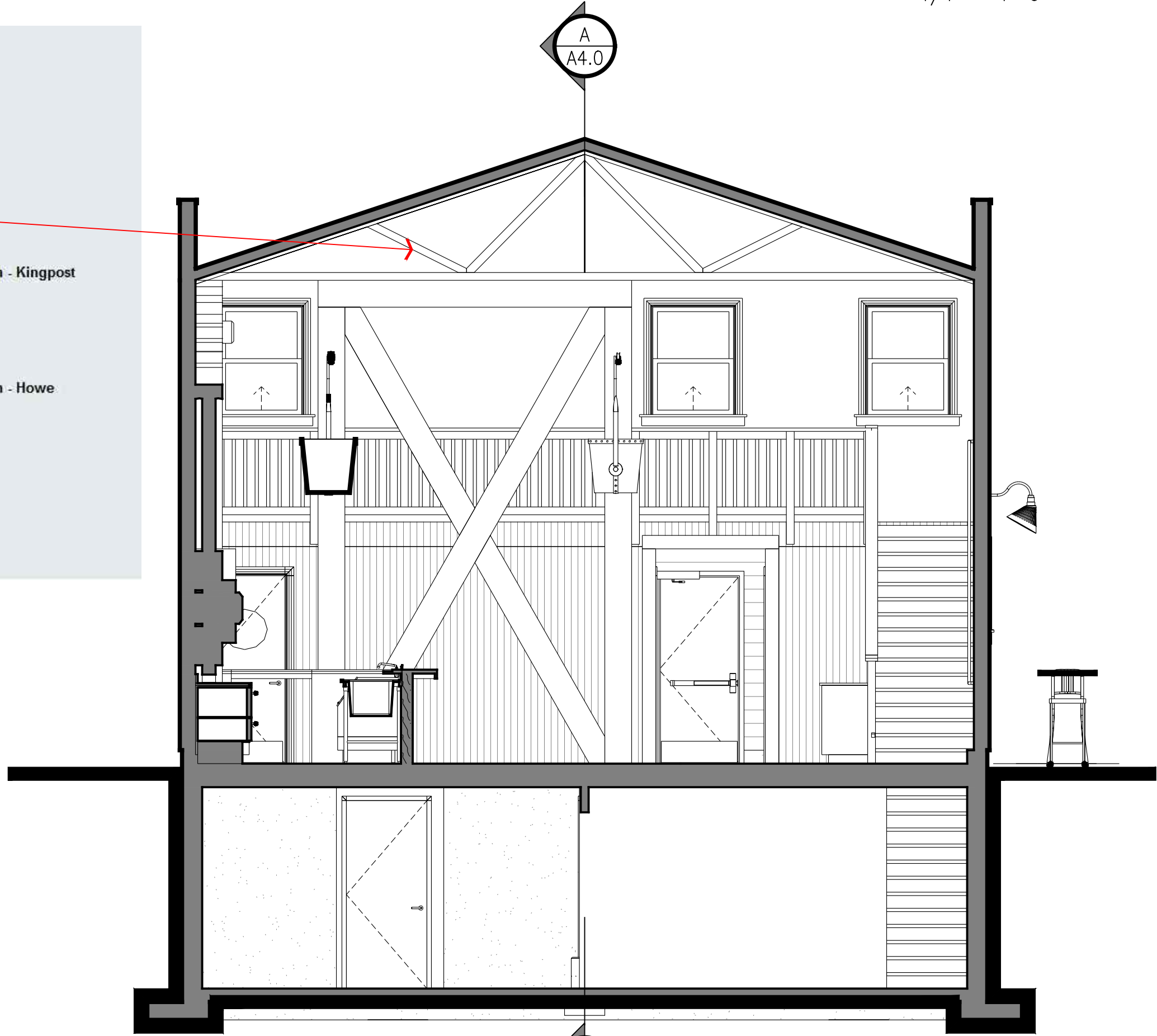
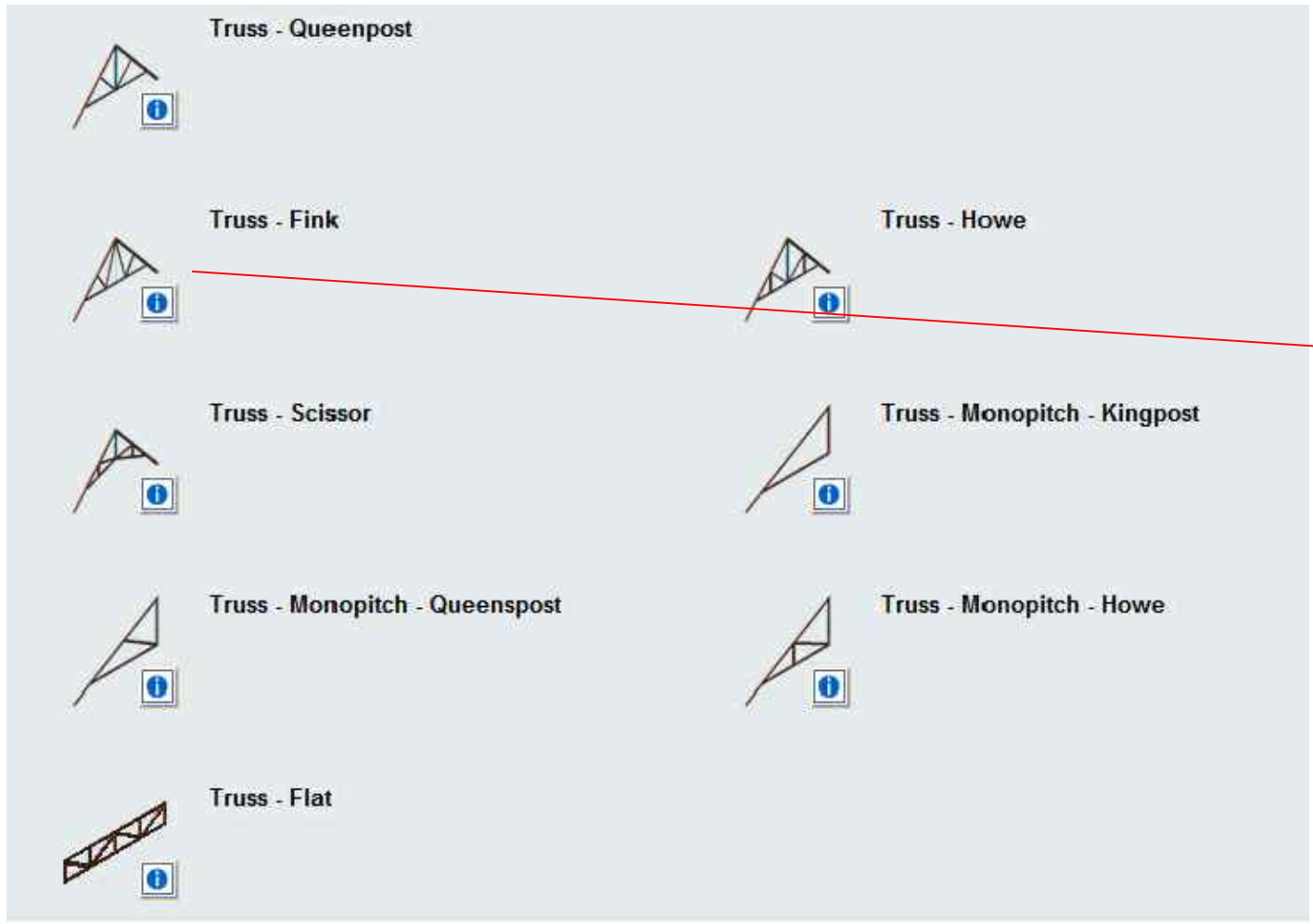


FOR ALTERNATE AND/OR HIGH DETAIL SOLUTIONS

ITEMS FROM OUR STREETS KIT.

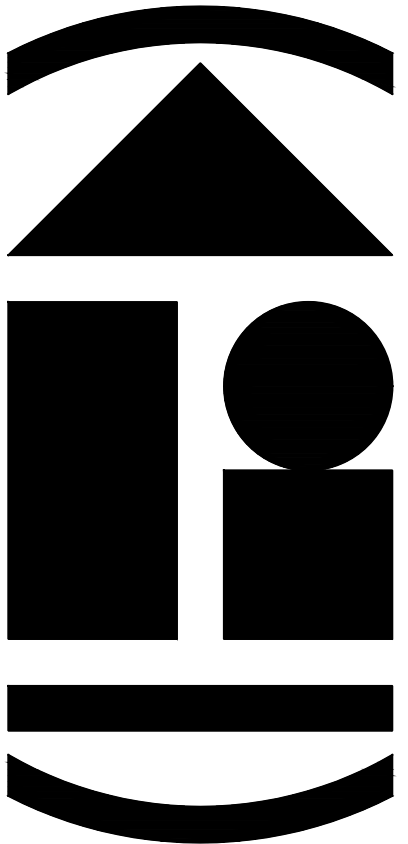
FOR RENDER LIGHTING

OUR STAIR STYLES HAVE UNIQUE "UP" AND "DOWN" DISPLAY REPRESENTATIONS THAT WORK WITH OUR CUSTOM STAIR TEMPLATE FILE. USING THESE, YOU CAN OVERRIDE STAIR DISPLAY TO MATCH YOUR NEEDS.



PROPOSED
SECTION B-B

1/4" = 1'-0"



ARCHIdigm
AutoCAD® Architecture Content
SAN FRANCISCO, CA.
www.archidigm.com
info@archidigm.com

PROJECT:
SALOON
EXAMPLE PROJECT
AUTOCAD ARCHITECTURE

ISSUED FOR:
DEMONSTRATION

DATE: 6/11/24

SCALE: AS NOTED

DRAWING TITLE:

SECTIONS

SHEET NO.

A4.0

A4.0 SECTIONS.DWG

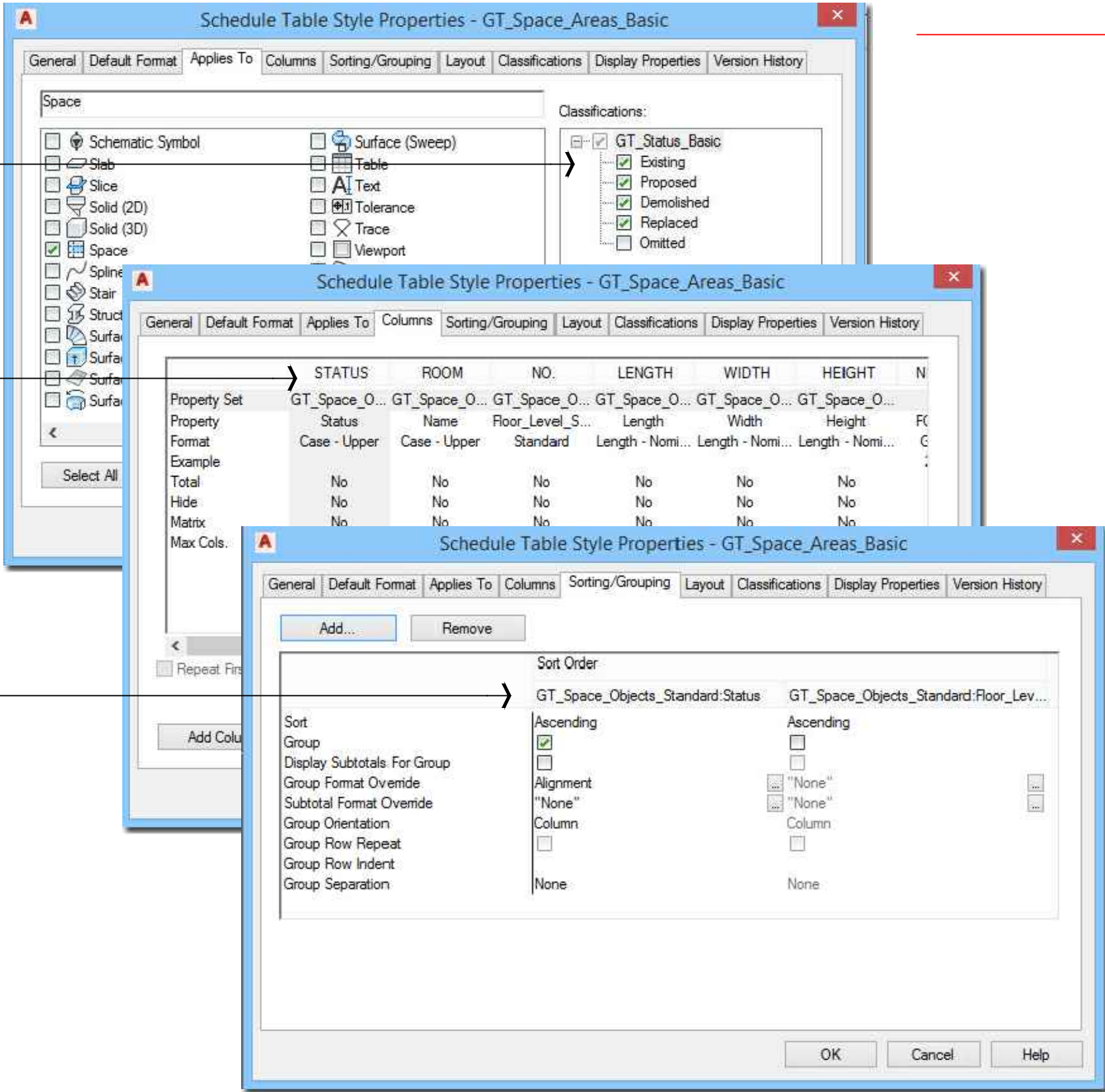
NUMEROUS CATALOGS FOR DIFFERENT TASKS

CUSTOM PROPERTY DEFINITIONS, LIST DEFINITIONS, CLASSIFICATION DEFINITIONS, PROPERTY DATA FORMATS, TAGS, TEXT STYLES AND SCHEDULES SO YOU CAN CREATE A MORE COMPLETE SET OF CONSISTENT DOCUMENTS.

STATUS CLASSIFICATION

NUMEROUS SCHEDULE STYLE COLUMNS
(REMOVE THOSE YOU DON'T NEED)

SORTING ORDER (ALTER PRIORITY OR
REMOVE WHAT YOU DON'T NEED)



SPACE AREAS TABLE								
STATUS	ROOM	NO.	LENGTH	WIDTH	HEIGHT	NET AREA	GROSS AREA	GROSS DELTA
EXISTING	SEATING	101	37'-3"	30'-0"	8'-6"	871.41 SF	935.40 SF	0.00 SF
	BREAK ROOM	103	6'-8"	13'-0"	8'-6"	73.62 SF	86.66 SF	0.00 SF
	KITCHEN	104	21'-9"	17'-7"	8'-6"	268.94 SF	294.73 SF	0.00 SF
	HALLWAY	105	21'-9"	12'-5"	8'-6"	119.30 SF	123.30 SF	0.00 SF
	M. BATHRM.	106	8'-2"	9'-3"	8'-6"	60.15 SF	75.43 SF	0.00 SF
PROPOSED	STORAGE RM.	B01	28'-6"	57'-6"	8'-6"	893.43 SF	893.43 SF	0.00 SF
	BAR	102	17'-3"	8'-2"	8'-6"	132.97 SF	141.59 SF	141.59 SF
	W. BATHRM.	107	8'-2"	8'-9"	8'-6"	60.15 SF	71.76 SF	71.76 SF
	MECH. RM.	B02	14'-1"	10'-8"	8'-6"	149.45 SF	149.45 SF	149.45 SF
	LAUNDRY RM.	B03	14'-1"	9'-7"	8'-6"	134.96 SF	134.96 SF	134.96 SF
	A/V RM.	B04	10'-8"	11'-8"	8'-6"	123.99 SF	123.99 SF	123.99 SF
	UTILITY RM.	B05	14'-1"	19'-2"	8'-6"	247.26 SF	247.26 SF	247.26 SF
	MEZZANINE	M01	21'-9"	30'-0"	8'-6"	615.95 SF	652.19 SF	652.19 SF
						3751.58 SF	3930.15 SF	1521.20 SF

OCCUPANCY TABLE

STATUS	ROOM	NO.	NET AREA	OCCUPANCY			EXITS
				GROUP	LOAD FACTOR	#	
EXISTING	SEATING	101	871.41 SF	A-2	15	59	2
	BREAK ROOM	103	73.62 SF	A-2	100	1	1
	KITCHEN	104	268.94 SF	A-2	200	2	1
	HALLWAY	105	119.30 SF	A-2	15	8	1
	M. BATHRM.	106	60.15 SF	A-2	0	1	1
PROPOSED	STORAGE RM.	B01	893.43 SF	S	300	3	1
	BAR	102	132.97 SF	A-2	15	9	1
	W. BATHRM.	107	60.15 SF	A-2	0	1	1
	MECH. RM.	B02	149.45 SF	U	300	1	1
	LAUNDRY RM.	B03	134.96 SF	U	300	1	1
	A/V RM.	B04	123.99 SF	U	300	1	1
	UTILITY RM.	B05	247.26 SF	U	300	1	1
	MEZZANINE	M01	615.95 SF	A-2	15	42	1
						130	

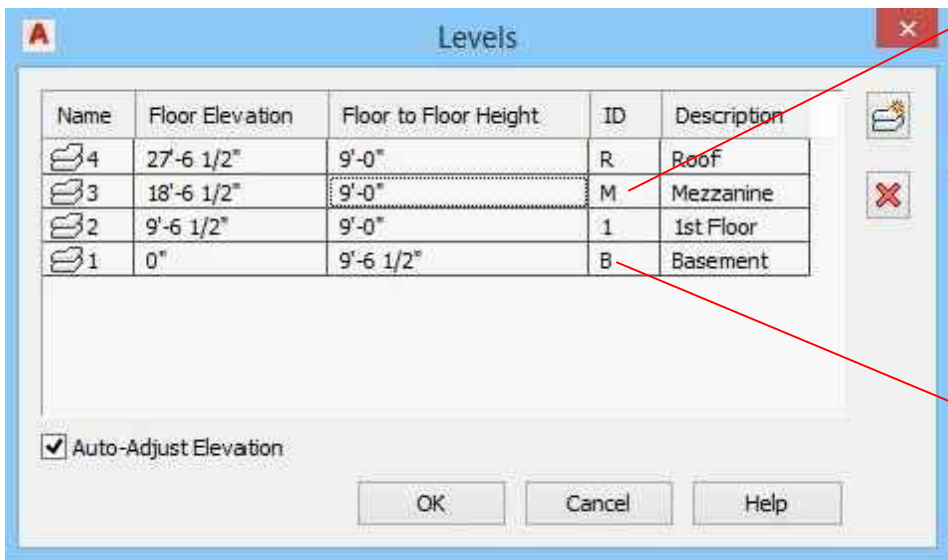
WINDOW SCHEDULE

STATUS	MARK	TYPE	SIZE	WIDTH	HEIGHT	HEAD HEIGHT	GLAZING	MATERIAL	OPERATION	FRAME					PLACEMENT	ROOM	NO.	REMARKS
										TYPE	MATERIAL	DETAIL						
												JAMB	HEAD	SILL				
EXISTING	101	A	84 x 60	7'-0"	5'-0"	8'-0"	DUAL PANE	ALUMINUM CLAD	PICTURE	EXISTING	WOOD	--	--	--	EXTERIOR	SEATING	101	--
	102	A	48 x 60	4'-0"	5'-0"	8'-0"	DUAL PANE	ALUMINUM CLAD	PICTURE	EXISTING	WOOD	--	--	--	EXTERIOR	SEATING	101	--
	103	A	48 x 60	4'-0"	5'-0"	8'-0"	DUAL PANE	ALUMINUM CLAD	PICTURE	EXISTING	WOOD	--	--	--	EXTERIOR	SEATING	101	--
	104	A	84 x 60	7'-0"	5'-0"	8'-0"	DUAL PANE	ALUMINUM CLAD	PICTURE	EXISTING	WOOD	--	--	--	EXTERIOR	SEATING	101	--
	105	A	84 x 60	7'-0"	5'-0"	8'-0"	DUAL PANE	ALUMINUM CLAD	PICTURE	EXISTING	WOOD	--	--	--	EXTERIOR	SEATING	101	--
	106	B	36 x 60	3'-0"	5'-0"	8'-0"	DUAL PANE	ALUMINUM CLAD	SINGLE HUNG	EXISTING	WOOD	--	--	--	EXTERIOR	SEATING	101	--
	M01	C	84 x 30	7'-0"	2'-6"	4'-0"	DUAL PANE	ALUMINUM CLAD	PICTURE	EXISTING	WOOD	--	--	--	EXTERIOR	OPEN TO BELOW	M02	--
	M02	D	120 x 30	10'-0"	2'-6"	4'-0"	DUAL PANE	ALUMINUM CLAD	PICTURE	EXISTING	WOOD	--	--	--	EXTERIOR	OPEN TO BELOW	M02	--
	M03	C	84 x 30	7'-0"	2'-6"	4'-0"	DUAL PANE	ALUMINUM CLAD	PICTURE	EXISTING	WOOD	--	--	--	EXTERIOR	OPEN TO BELOW	M02	--
	M04	B	36 x 48	3'-0"	4'-0"	8'-0"	DUAL PANE	ALUMINUM CLAD	SINGLE HUNG	EXISTING	WOOD	--	--	--	EXTERIOR	MEZZANINE	M01	--
M05	B	36 x 48	3'-0"	4'-0"	8'-0"	DUAL PANE	ALUMINUM CLAD	SINGLE HUNG	EXISTING	WOOD	--	--	--	EXTERIOR	MEZZANINE	M01	--	
M06	B	36 x 48	3'-0"	4'-0"	8'-0"	DUAL PANE	ALUMINUM CLAD	SINGLE HUNG	EXISTING	WOOD	--	--	--	EXTERIOR	MEZZANINE	M01	--	
REPLACED	107	C	36 x 16	3'-0"	1'-4"	7'-0"	DUAL PANE	ALUMINUM CLAD	AWNING	NEW TO MATCH (E)	WOOD	--	--	--	EXTERIOR	W. BATHRM.	107	--
	108	C	36 x 16	3'-0"	1'-4"	7'-0"	DUAL PANE	ALUMINUM CLAD	AWNING	NEW TO MATCH (E)	WOOD	--	--	--	EXTERIOR	M. BATHRM.	106	--

DOOR SCHEDULE

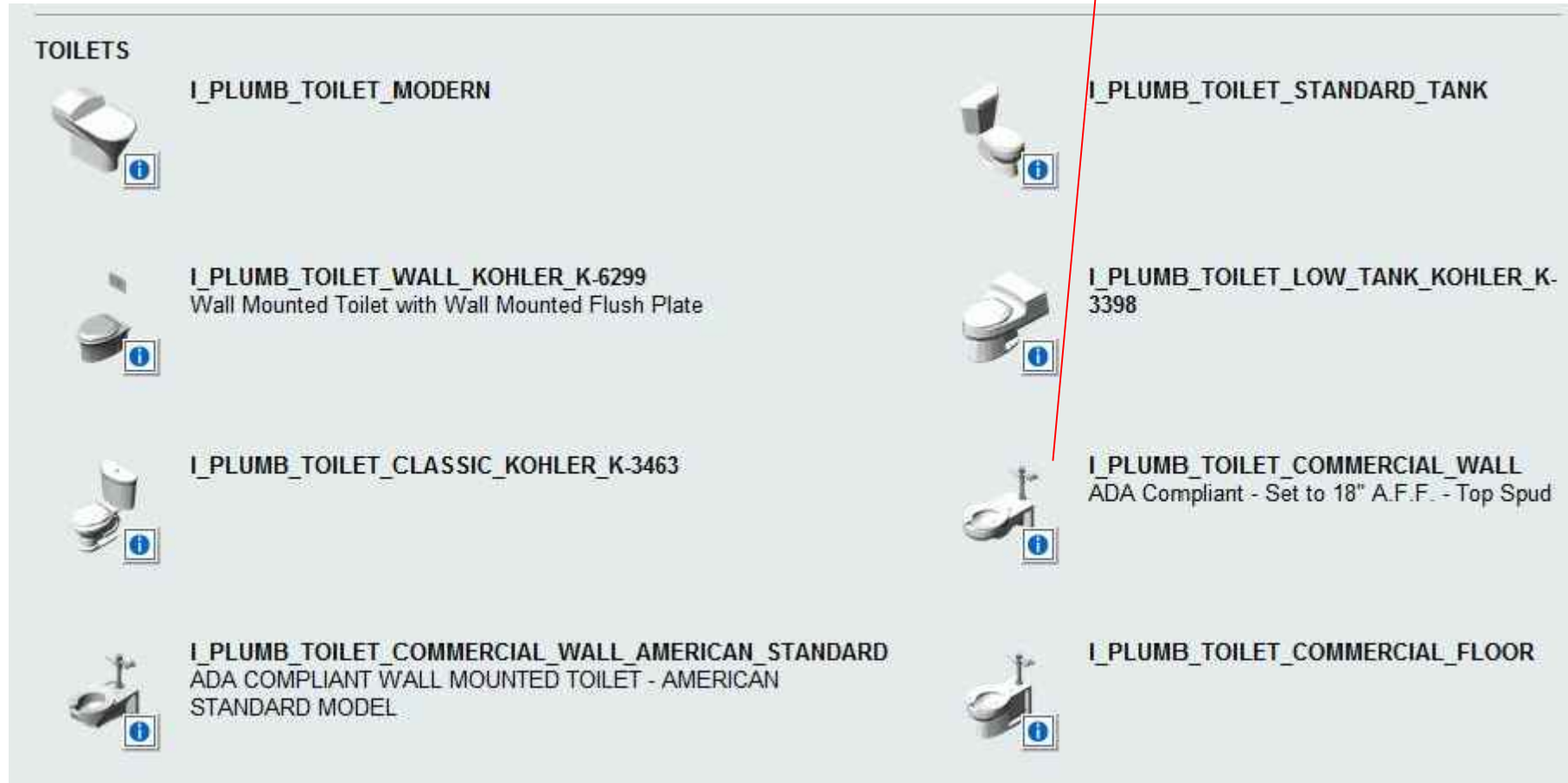
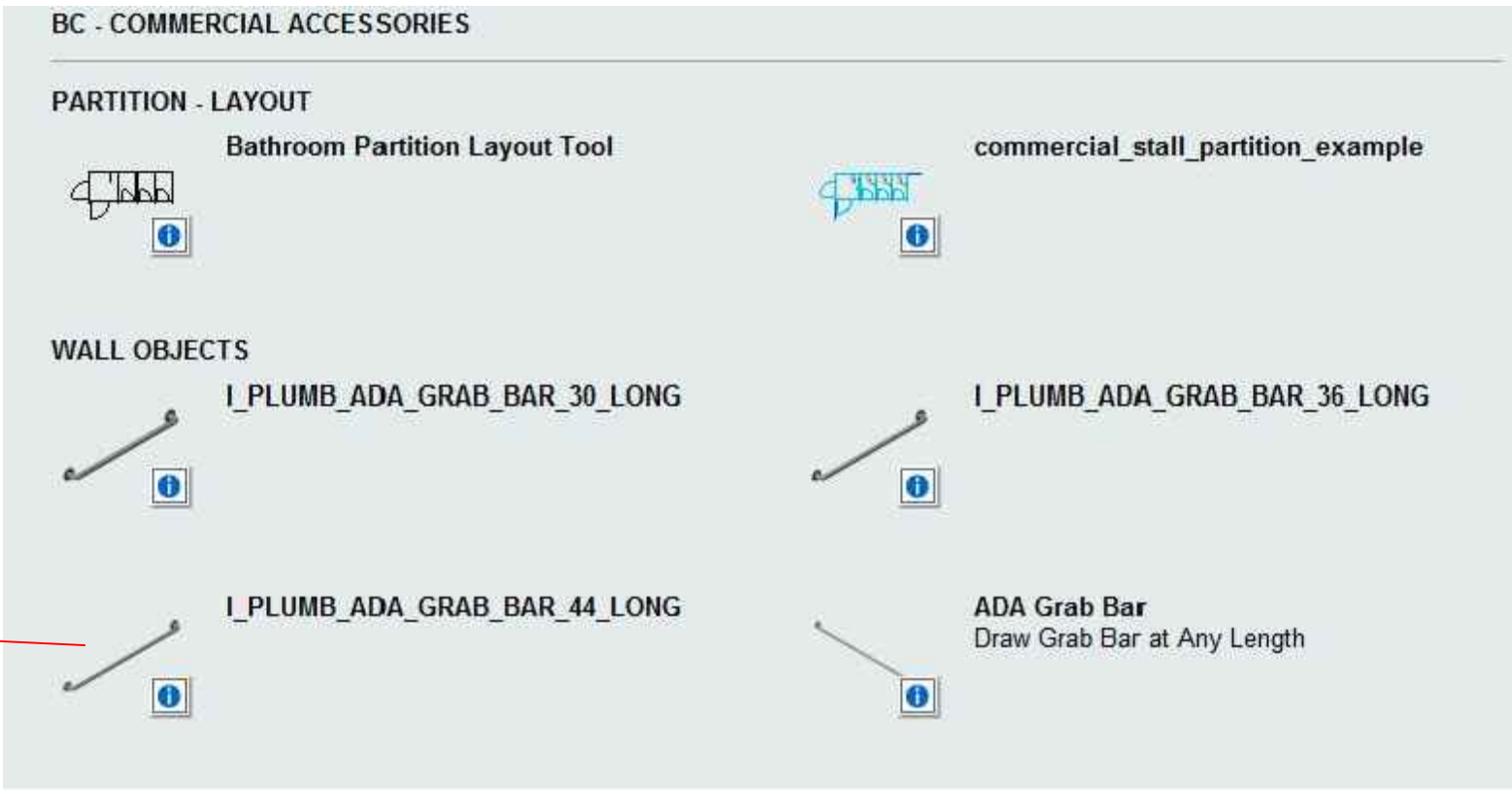
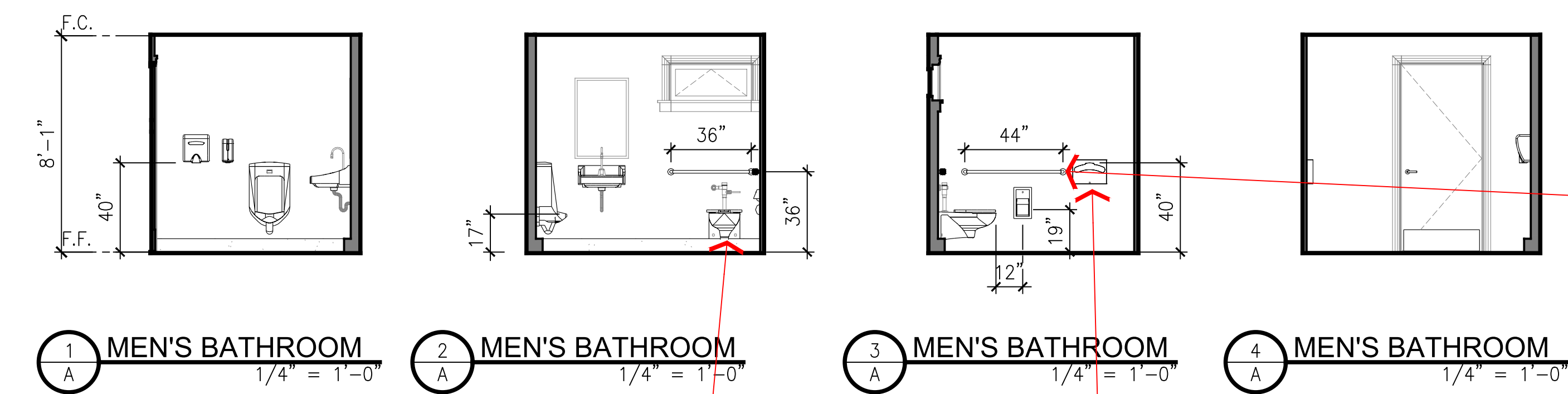
STATUS	MARK	PANEL								FRAME					FIRE RATING		PLACEMENT	ROOM	NO.	HARDWARE GROUP	REMARKS
		SIZE	WIDTH	HEIGHT	THICKNESS	GLAZING	MATERIAL	OPERATION		DIRECTION	TYPE	MATERIAL	DETAIL			MINUTES					
EXISTING	101	PR 36 x 96	6'-0"	8'-0"	1 3/4"	YES	WOOD	SINGLE HINGED DOUBLE	NA	EXISTING	WOOD	--	--	--	N.R.	EXTERIOR	SEATING	101	1		
	102	36 x 84	3'-0"	7'-0"	1 3/4"	YES	WOOD	DOUBLE HINGED SINGLE	RIGHT	EXISTING	WOOD	--	--	--	N.R.	INTERIOR	SEATING	101	2		
	103	36 x 84	3'-0"	7'-0"	1 3/4"	NO	WOOD	SINGLE HINGED	RIGHT	WOOD	MDF	--	--	--	N.R.	INTERIOR	BREAK ROOM	103	3		
	104	36 x 84	3'-0"	7'-0"	1 3/4"	NO	WOOD	SINGLE HINGED	RIGHT	WOOD	MDF	--	--	--	N.R.	INTERIOR	KITCHEN	104	3		
	106	36 x 84	3'-0"	7'-0"	1 3/4"	NO	WOOD	SINGLE HINGED	LEFT	WOOD	MDF	--	--	--	N.R.	INTERIOR	M. BATHRM.	106	5		
PROPOSED	105	36 x 84	3'-0"	7'-0"	1 3/4"	NO	STEEL	SINGLE HINGED	LEFT	METAL	STEEL	--	--	--	N.R.	EXTERIOR	HALLWAY	105	4	PANIC HARDWARE	
	107	36 x 84	3'-0"	7'-0"	1 3/4"	NO	WOOD	SINGLE HINGED	RIGHT	WOOD	MDF	--	--	--	N.R.	INTERIOR	W. BATHRM.	107	6		
	B02	36 x 84	3'-0"	7'-0"	1 3/4"	NO	WOOD	SINGLE HINGED	LEFT	WOOD	MDF	--	--	--	N.R.	INTERIOR	MECH. RM.	B02	2		
	B03	36 x 84	3'-0"	7'-0"	1 3/4"	NO	WOOD	SINGLE HINGED	LEFT	WOOD	MDF	--	--	--	N.R.	INTERIOR	LAUNDRY RM.	B03	2		
	B04	36 x 84	3'-0"	7'-0"	1 3/4"	NO	WOOD	SINGLE HINGED	LEFT	WOOD	MDF	--	--	--	N.R.	INTERIOR	A/V RM.	B04	2		
REPLACED	B05	36 x 84	3'-0"	7'-0"	1 3/4"	NO	WOOD	SINGLE HINGED	LEFT	WOOD	MDF	--	--	--	N.R.	INTERIOR	UTILITY RM.	B05	2		
	108	32 x 84	2'-8"	7'-0"	1 3/4"	NO	WOOD	SINGLE HINGED	LEFT	WOOD	MDF	--	--	--	N.R.	INTERIOR	HALLWAY	105	3		
	B01	36 x 84	3'-0"	7'-0"	1 3/4"	NO	WOOD	SINGLE HINGED	RIGHT	METAL	STEEL	--	--	--	N.R.	EXTERIOR	STORAGE RM.	B01	1		

"STATUS" CAN BE ADDED OR REMOVED
FROM SCHEDULES



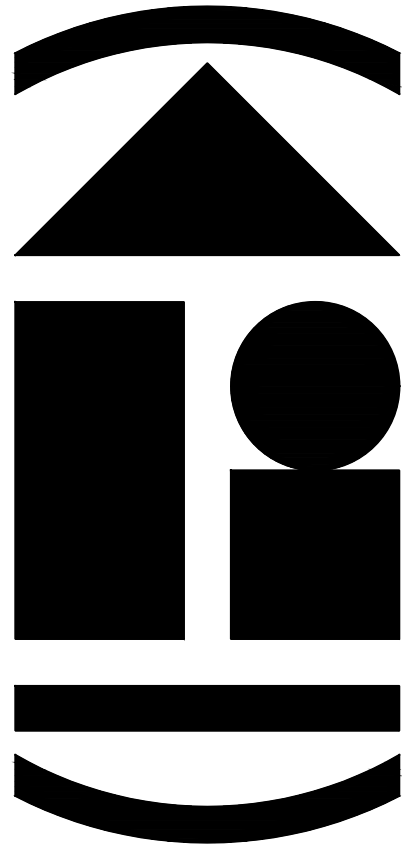
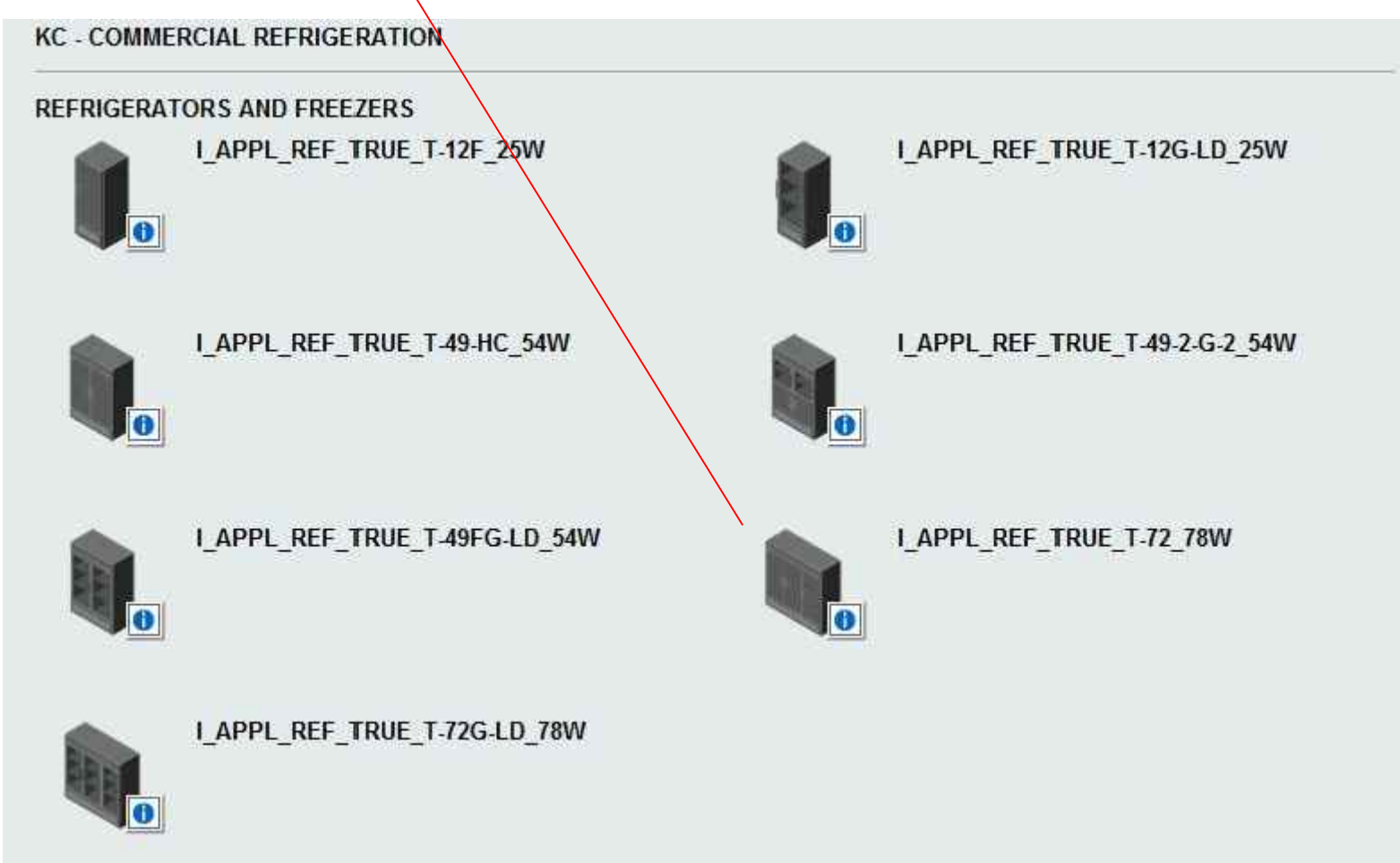
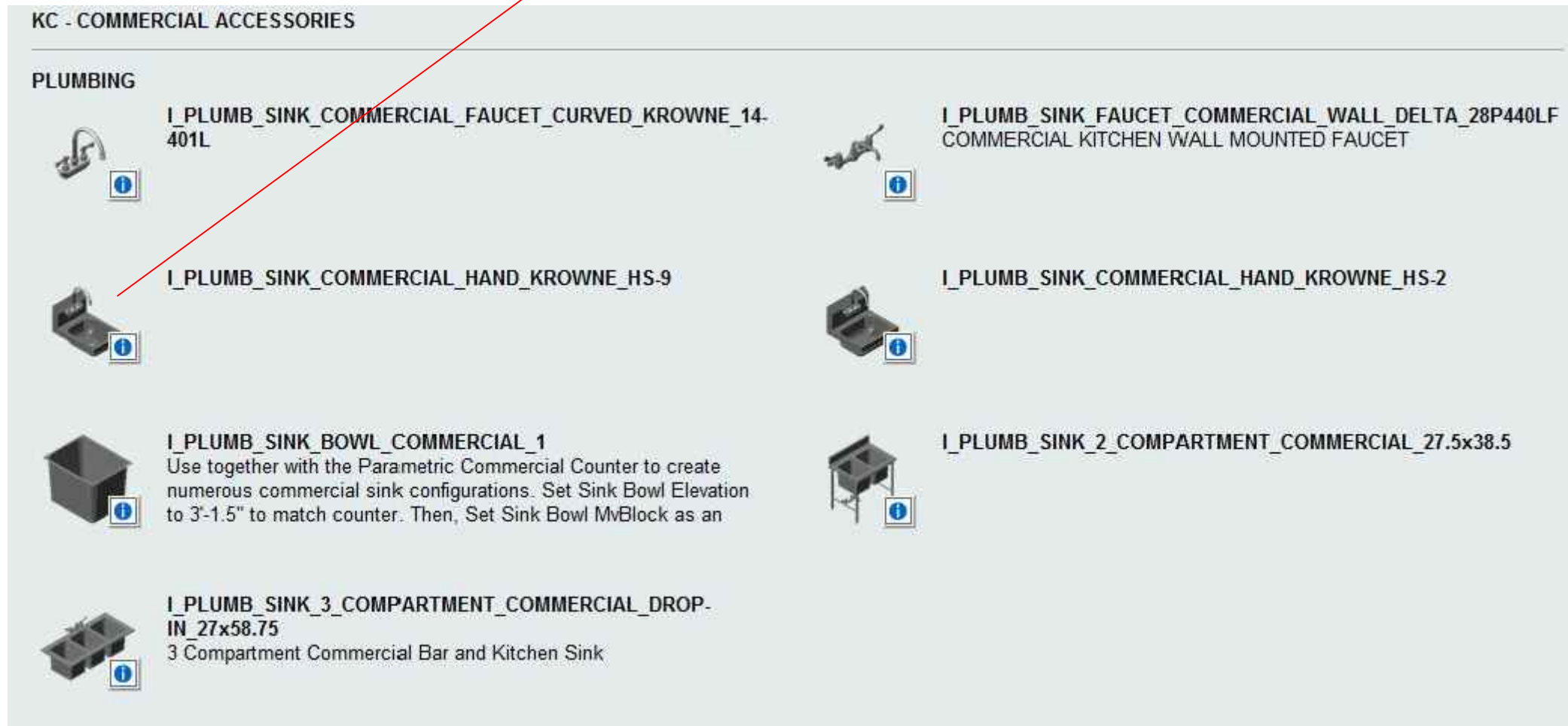
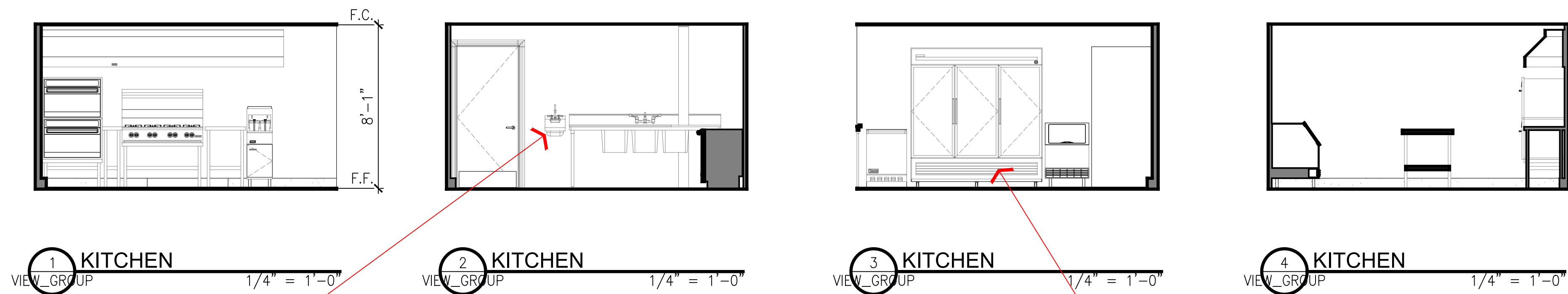
PUBLIC BATHROOM CATALOG CONTENT

OUR BATHROOM CABINETS KIT OFFERS COMMON ACCESSIBLE PLUMBING FIXTURES AND ACCESSORIES.



COMMERCIAL KITCHEN CATALOG CONTENT

OUR BATHROOM CABINETS KIT AND KITCHEN CABINETS KIT OFFER COMMON COMMERCIAL KITCHEN OBJECTS.



ARCHIdigm
AutoCAD® Architecture Content
SAN FRANCISCO, CA.
www.archidigm.com
info@archidigm.com

PROJECT: **SALOON**
EXAMPLE PROJECT
AUTOCAD ARCHITECTURE

ISSUED FOR:
DEMONSTRATION

DATE: 6/11/24

SCALE: AS NOTED

DRAWING TITLE:

**INTERIOR
ELEVATIONS**

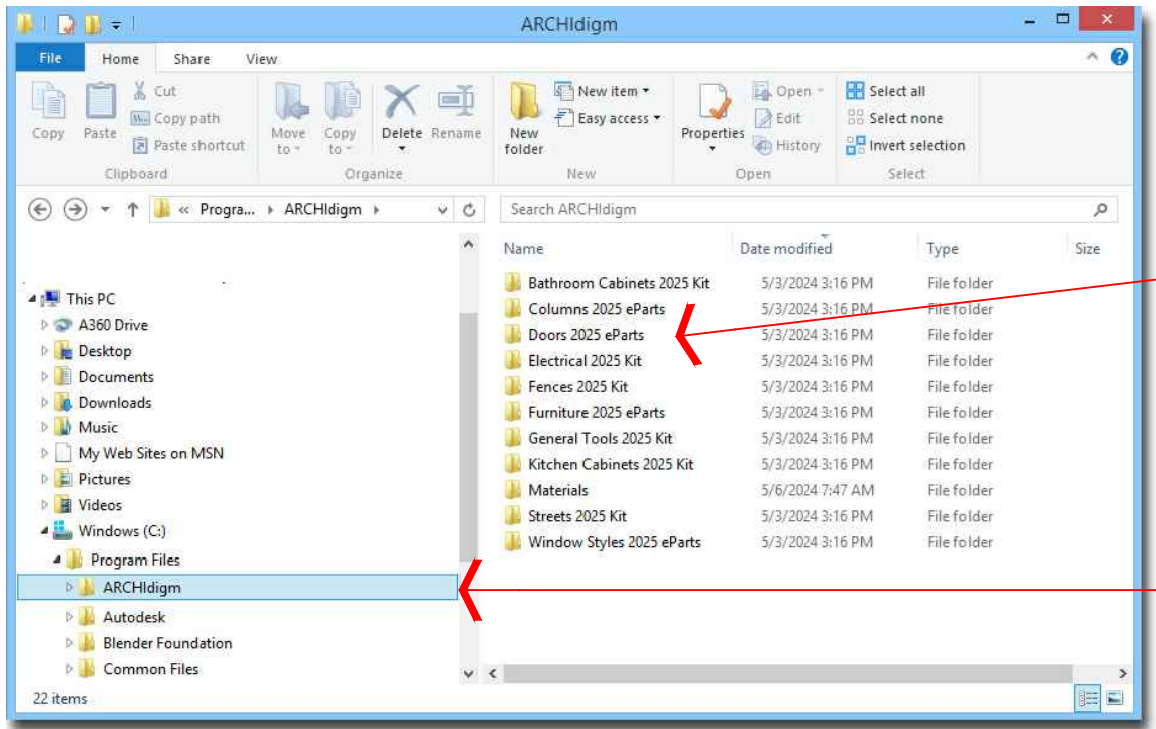
SHEET NO.

11.0

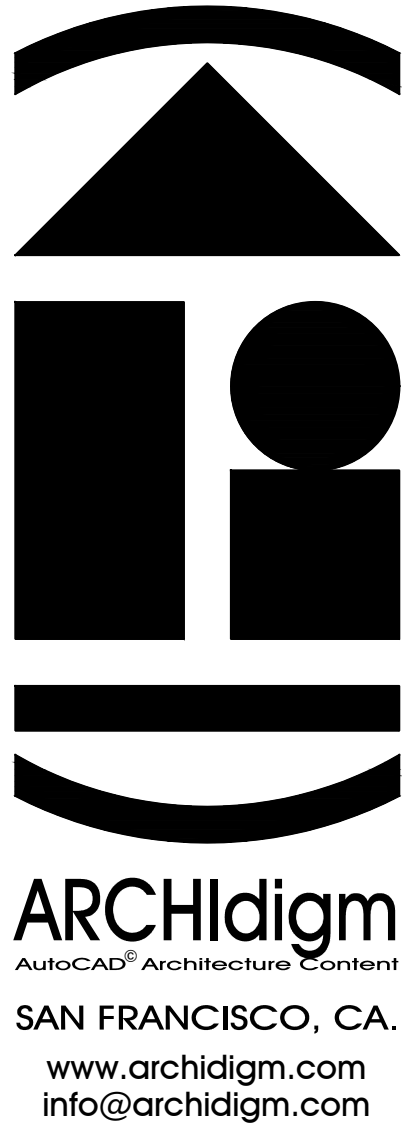
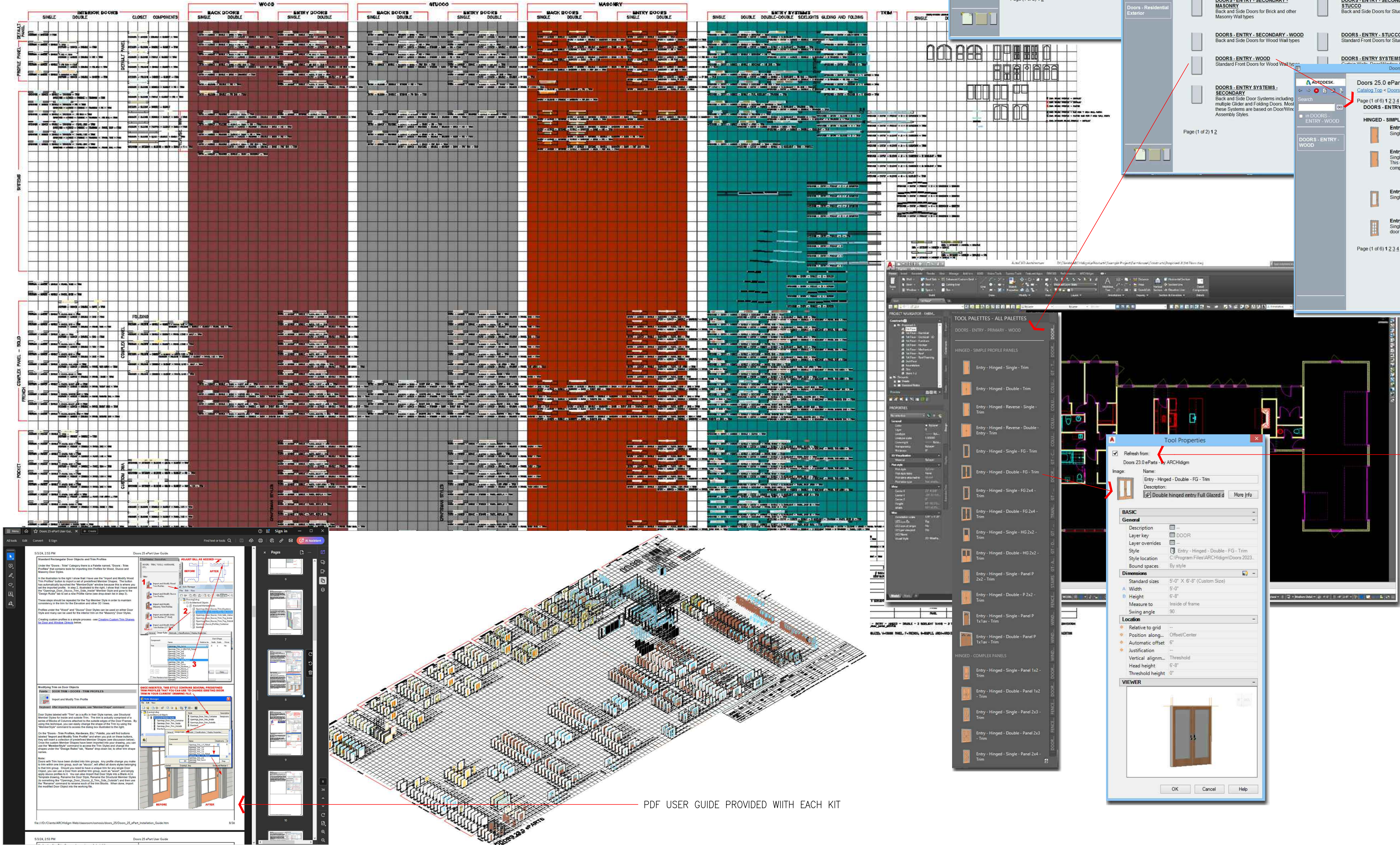
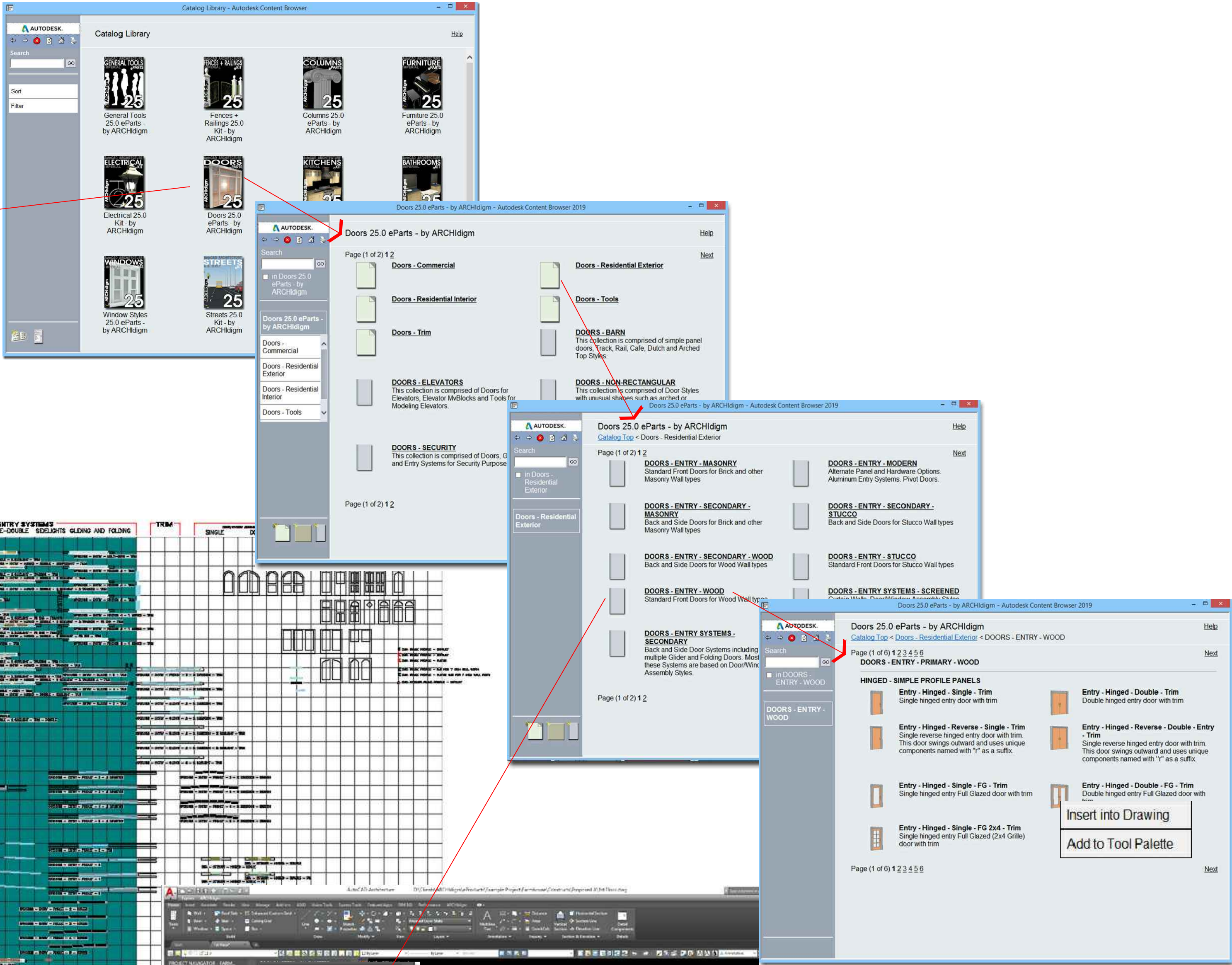
11.0 INTERIOR ELEVATIONS.DWG

NUMEROUS CATALOGS FOR DIFFERENT TASKS

COMING FROM A TEACHING/TRAINING BACKGROUND, WE DESIGNED THESE KITS TO BE CUSTOMIZABLE. USE THEM AS IS OR TAKE WHAT YOU WANT TO CREATE YOUR OWN SOLUTIONS. YOU CAN BUILD YOUR OWN LIBRARY FILES OR JUST MIX AND MATCH TOOLS INTO YOUR OWN TOOL PALETTE COLLECTIONS.



ALL CONTENT CATALOG FILES ARE STORED HERE
CONTENT LIBRARIES ARE ORGANIZED IN EASILY ACCESSIBLE .DWG FILES



PROJECT: **SALOON**
EXAMPLE PROJECT
AUTOCAD ARCHITECTURE

ISSUED FOR:
DEMONSTRATION
DATE: 6/11/24
SCALE: AS NOTED
DRAWING TITLE:
GENERAL NOTES
SHEET NO.

G1.0