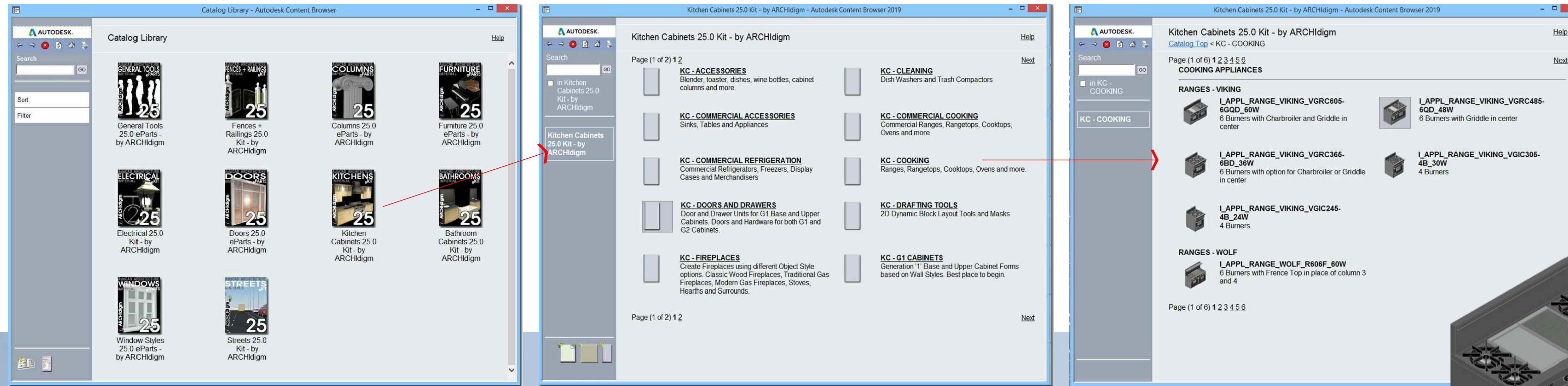
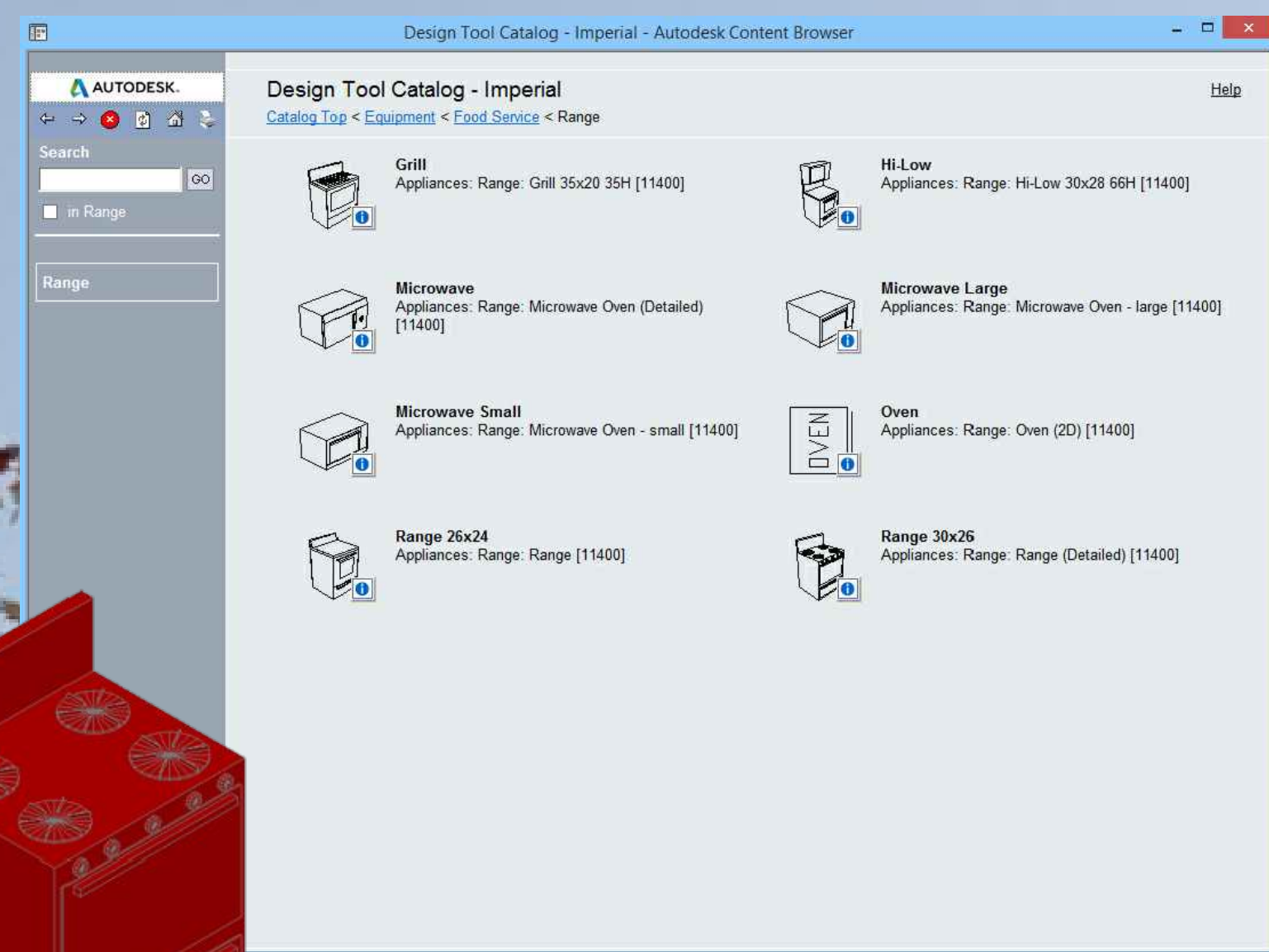
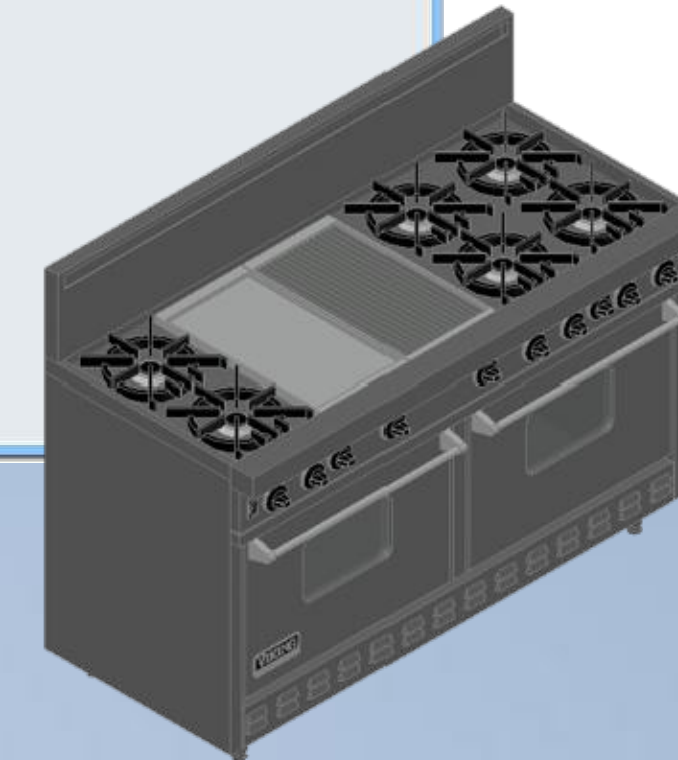


CONTENT CATALOG LIBRARIES FOR AutoCAD® ARCHITECTURE

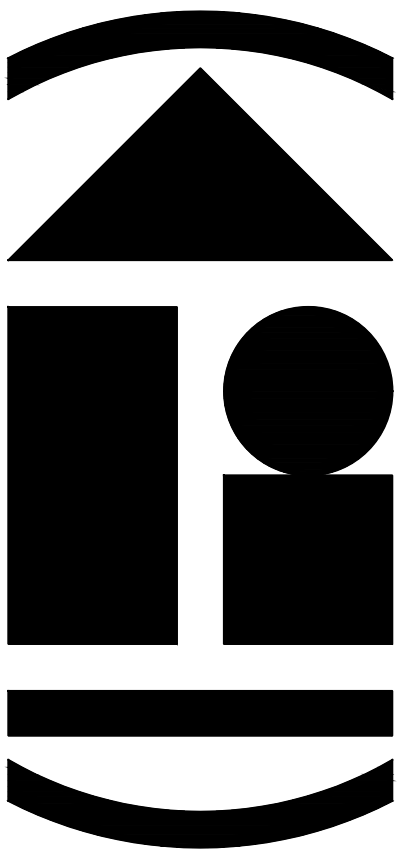
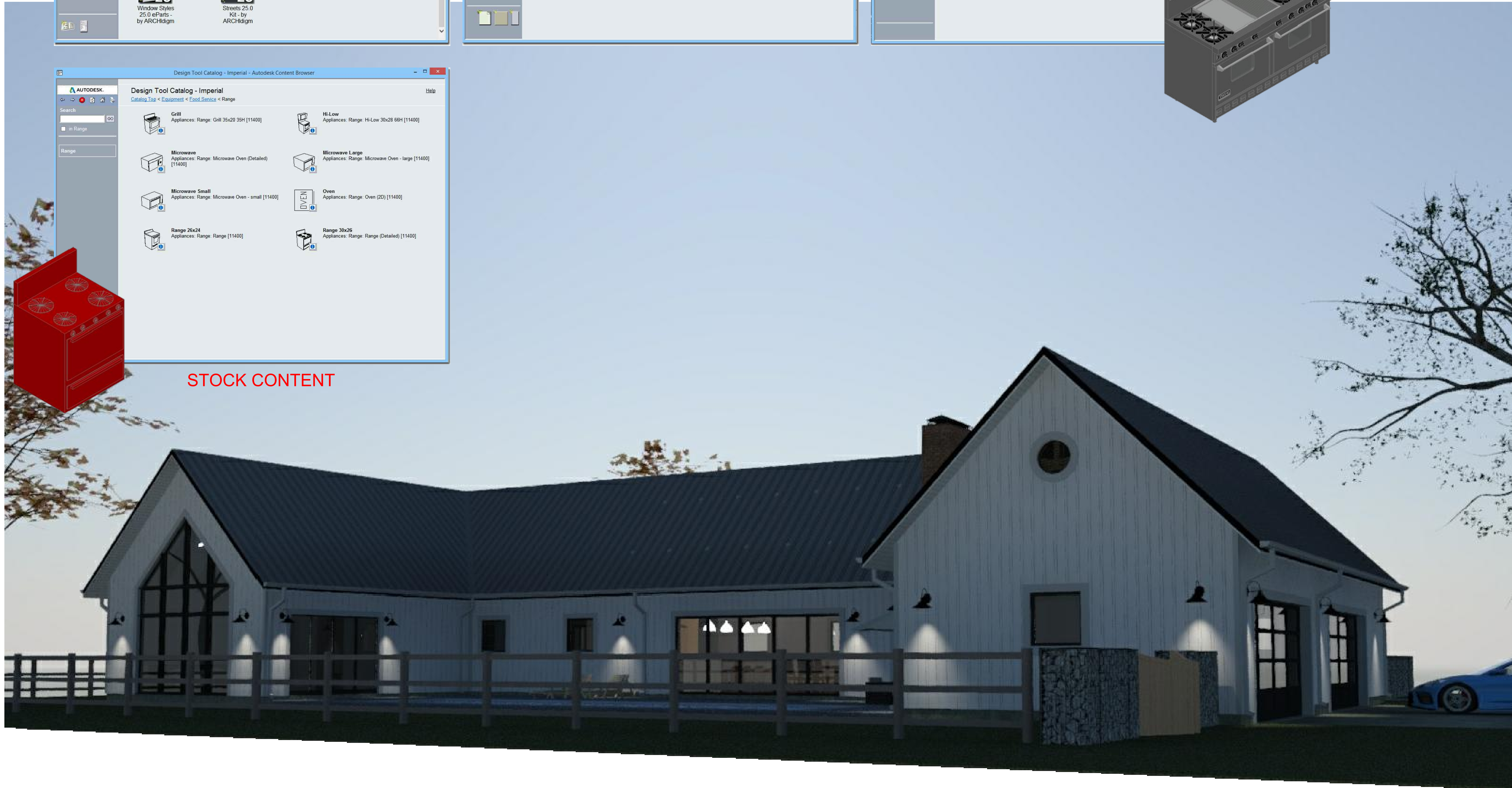
WE HAVE UPDATED, REPLACED AND/OR EXPANDED UPON NEARLY EVERY STOCK CATALOG LIBRARY ITEM (SOME OF WHICH DATE BACK TO THE EARLY 1990's)



CUSTOM CONTENT
BY ARCHIdigm



STOCK CONTENT



ARCHIdigm
AutoCAD® Architecture Content
SAN FRANCISCO, CA.
www.archidigm.com
info@archidigm.com

PROJECT:
MODERN FARMHOUSE
EXAMPLE PROJECT
AUTOCAD ARCHITECTURE

ISSUED FOR:
DEMONSTRATION

DATE: 5/21/24

SCALE: AS NOTED

DRAWING TITLE:

COVER PAGE

SHEET NO.

A0.0

A0.0 COVER PAGE.DWG

NUMEROUS CATALOGS FOR DIFFERENT TASKS

WE HAVE CONTENT CATALOGS FOR KITCHENS, BATHROOMS, DOORS, WINDOWS, FENCES, SITE AND MORE. SEE PRODUCT OVERVIEW DOCUMENTATION FOR FULL LISTS OF CONTENT. "KITCHEN CABINETS", FOR EXAMPLE, OFFERS SOLUTIONS FOR COMMERCIAL KITCHENS/BARS AND NUMEROUS RESIDENTIAL FIREPLACE TOOLS/MVBLOCKS IN ADDITION TO CABINETS.

Roof_Assembly_0.5_Gypsum_0.75_Plywood_0.25_Standing_Seam_Metal

Roof_Assembly_0.5_Gypsum_0.75_Plywood_3.0_Spanish_Tile_1

Roof_Assembly_0.5_Gypsum_0.75_Plywood_0.25_Tile_Slate

Roof_Assembly_0.5_Gypsum_0.75_Plywood_0.25_Tile_Solar
Loosely based on Tesla Roof Tiles

Roof_Solar_Panels
Use to Create a Surface Mounted Solar Panel. Based on 39"x65"

DEMOLISH

Demolish Roof Slabs Instructions
Before using Demolish Tools, set their Layer Properties to your Layer Key for "Demo" To use Tool, right-click over tool and select "Apply Tool Properties to" Roof Slab. Then, Select a Roof Slab Object in your drawing.

Roof_Demolished

TOOLS

Assign Roof Slab Edge Styles
Import and Assign Custom Roof Slab Edge Styles such as Fascia Boards and Material Edges

Roofs_Gutter_Ogee_5.75x3.75
Creates a structural beam.

Roofs_Gutter_Ogee_6x5
Creates a structural beam.

Roofs_Gutter_Half_Round_5_Inch
Creates a structural beam.

Roofs_Gutter_Half_Round_8_Inch
Creates a structural beam.

Roofs_Gutter_Fascia_4x4.75
Creates a structural beam.

Roofs_Gutter_Half_Round_6_Inch
Creates a structural beam.

Roofs_Gutter_Half_Round_10_Inch
Creates a structural beam.

DOWNSPOUTS

Roofs_Downspout_3x3

Roofs_Downspout_3x4

WOOD FENCES

Fence - Palisade
Square Rails and Posts. Top Rail @ 2'-6" (30") High - Pickets @ 3'-0" (36") High. Note: Style uses a Mass Element Block for Pickets.

Fence - Picket
Square Rails and Posts @ 3'-2" (38") High - Pickets @ 3'-0" (36") High. Note: Style uses a Mass Element Block for Pickets.

Fence - Picket on Curb
6" High Curb with Square Rails and Posts @ 3'-8" (44") High - Pickets @ 3'-6" (42") High. Note: Style uses a Mass Element Block for Pickets.

Fence - Post and Board
Square Rails and Posts @ 4'-0" (48") High with Continuous Board Cap

Fence - Post and Lattice
Square Posts @ 7'-0" (84") High and Lattice @ 12" O.C. - Garden Style

Fence - Post and Lattice - Swags
This Curtain Wall Style is highly customizable. Swags are made from individual Window Styles.

Fence - Timber Pole
Round Rails and Posts @ 6'-0" (72") High

Fence - Post and Rail - Round Column - Square Ra
Square Rails and Round Posts @ 4'-0" (48") High

Fence - Post and Rail - Round Column - Round Rails
Round Rails and Posts @ 4'-0" (48") High

SWIMMING POOLS

POOLS - MVBLOCKS

Streets_Sports_Swimming_Pool_Private_Lap_10x40

Streets_Sports_Swimming_Pool_Private_Oval_20x40

Streets_Sports_Swimming_Pool_Private_Lazy_L_20x47

Streets_Sports_Swimming_Pool_Private_Aspen_30x44

Streets_Sports_Swimming_Pool_Private_Mountain_Lake_27x46

Streets_Sports_Swimming_Pool_Private_Artesian_22x40

Streets_Planting_Tree_Evergreen_California_Oak

Streets_Planting_Tree_Evergreen_Bamboo_3_Stalks

Streets_Planting_Tree_Evergreen_Palm_30R_1

GRADES

Streets_Grade - Grass

Streets_Grade - Grass - Flowers

Streets_Grade - Grass - 1

Streets_Grade - Grass - Dark Bermuda

Streets_Grade - Grass - Short

Fence_Gate_Palisade_Square_Post_Hinged_Dbl

Fence_Gate_Standard_Square_Post_Hinged_Sngl

Fence_Gate_Standard_Square_Post_Hinged_Dbl

Fence_Gate_Post_Plank_Square_Post_Hinged_Sngl

Fence_Gate_Post_Plank_Square_Post_Hinged_Dbl

Fence_Gate_Wood_Post_Lattice_Sngl

Fence_Gate_Wood_Privacy_Hinged_Sngl_Arch_Window

Fence_Gate_Wood_Privacy_Hinged_Sngl_Arch_Slats

Fence_Gate_Wood_Privacy_Hinged_Dbl_Arch_Panels

TRANSPORTATION

Transportation Objects Overview
All of the Objects on this Palette are Multiview Blocks comprised of a Model Block, Plan Block and Mask Block (AecPolygon). Because AutoCAD is not well suited for (AecPolygon).

PRIVATE

Streets_Transportation_Private_Bicycle_Traditional_1

Streets_Transportation_Private_Bicycle_Traditional_1_Leaning
15 Degrees Against Wall

Streets_Transportation_Private_Car_Porsche_359

Streets_Transportation_Private_Car_1955_Chevy_Bel_Air_Coupe

Streets_Transportation_Private_Car_1932_Ford_Coupe

Streets_Transportation_Private_Car_Sport_Corvette_C8

STREETS

STREETS WITHOUT SIDEWALKS

streets_road_one_lane_country

streets_road_two_lane_country

streets_road_two_lane_country_double_stripe_passing

streets_road_two_lane_country_one_stripe

streets_road_two_lane_country_shoulder

streets_avenue_10ft_island
No Sidewalks

streets_avenue_10ft_island_bike_lane_parking
No Sidewalks

E_Model_Light_Wall_Exterior_Craftsman_2
Wall Sconce - Exterior - Craftsman - Black

E_Model_Light_Wall_Nautical_1
Wall Sconce - Exterior - Nautical Round - 10" Dia.

E_Model_Light_Wall_Nautical_2
Wall Sconce - Exterior - Nautical Oval - 8.25"x4.25"

E_Model_Light_Wall_Nautical_2_Vertical
Wall Sconce - Exterior - Nautical Oval - 4.25"x8.25"

E_Model_Light_Wall_Nautical_3
Wall Sconce - Exterior - Nautical Oval Hood - 8.25"x4.25"

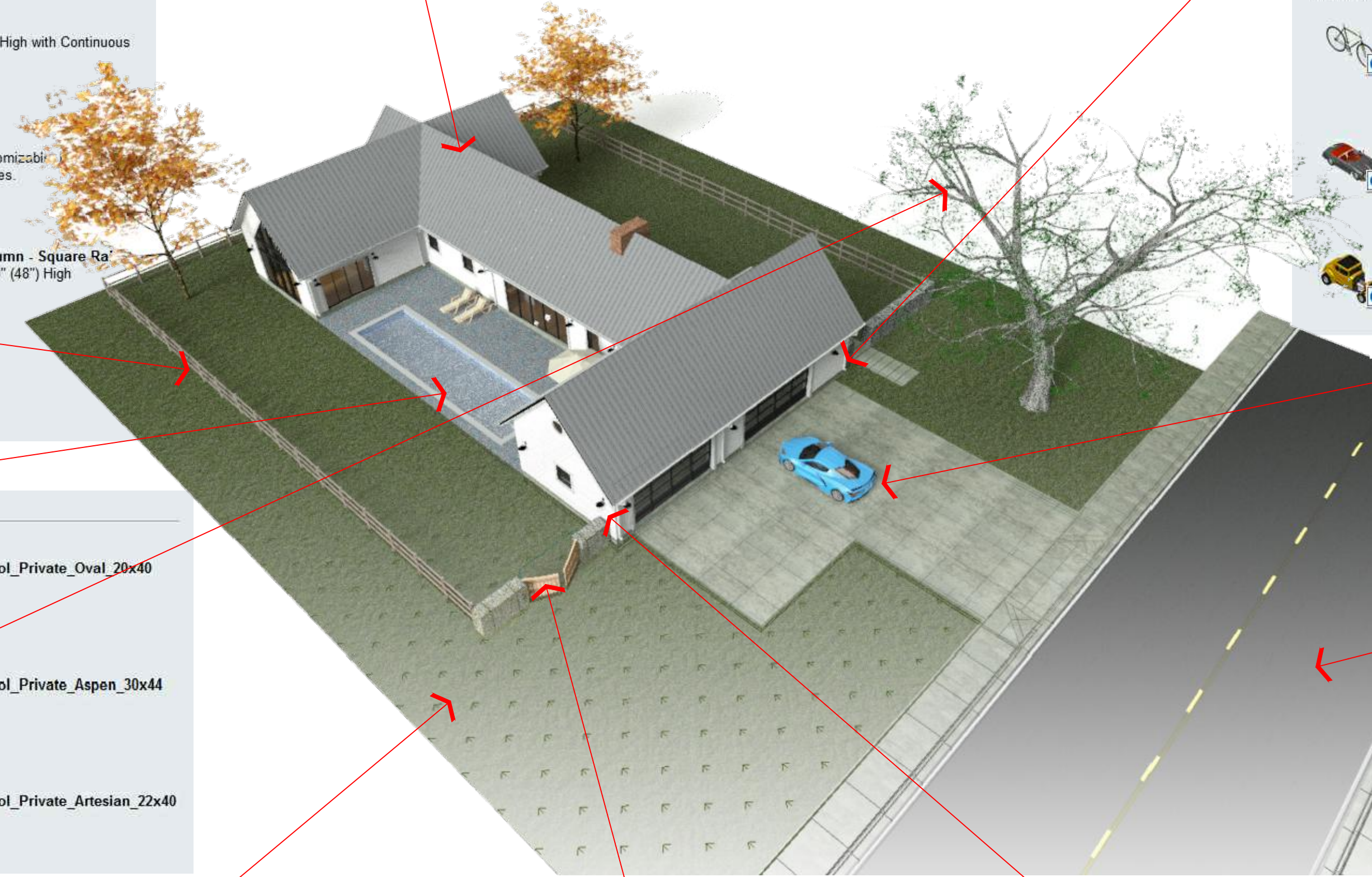
E_Model_Light_Wall_Exterior_Retro_Barn_14_Diameter
Wall Sconce - Exterior - Retro Barn - 14 inch Diameter - Black

E_Model_Light_Wall_Exterior_Barn_1
Wall Sconce - Exterior - Barn - 1 - Black

TRACK LIGHTING

E_Model_Light_Ceiling_Track
Track Light

Convert to Track Light Layout
Use to Convert a Pline or Spline into a Layout Curve with Nodes that you can Anchor a Track Light MBlock to.



I_PLUMB_LAV_KOHLER_INTAGLIO_K-2292-0

I_PLUMB_LAV_KOHLER_IRON_BELL_VESSEL_K-2804-P5-0
Identical to other Iron Bell unit but sits high as a Vessel

I_PLUMB_LAV_KOHLER_K-2276
17.5 Dia. Glass Vessel

I_PLUMB_LAV_AMERICAN_STANDARD_VESSEL_0621.001
22x18.5x4.5 - Above Counter Sink - Vessel

I_PLUMB_LAV_WALL_CORNER_20x16
Based on the Porcher Angle model

I_PLUMB_LAV_WALL_OVAL

I_PLUMB_LAV_KOHLER_IRON_BELL_K-2804-P5-0

I_PLUMB_LAV_KOHLER_VOX_SQUARE_K-2661-0
Above Counter Vessel Type Sink - 16"x16"

I_PLUMB_LAV_VESSEL_ARTISAN_1
17.75x13.75x4.3 - Above Counter - Vessel

I_PLUMB_LAV_WALL_WHITTINGTON_CORRIE_13.25x11.25
Based on a Whittington model - Corrie Mini

BATHTUBS

BATHTUBS - UNITS - TILED

I_PLUMB_BATH_UNIT_60x32x21_TILE

I_PLUMB_BATH_UNIT_60x32x16_TILE

I_PLUMB_BATH_UNIT_60x30x16_TILE

I_PLUMB_BATH_UNIT_60x32x18_PRE-FAB

BATHTUBS - UNITS

I_PLUMB_BATH_UNIT_60x32x21

I_PLUMB_BATH_UNIT_60x32x16

NUMEROUS CATALOGS FOR DIFFERENT TASKS

OUR DOOR AND WINDOW CATALOGS OFFER CUSTOMIZABLE TRIM BASED ON BLOCKS OF STRUCTURAL MEMBERS ATTACHED TO THE EDGES OF THESE OBJECTS.

WINDOWS - RECTANGULAR - WOOD

STANDARD SET

Pass Through - Rectangular - Wood - Trim
Pass Through (No Glass) Window with Trim

Picture - Rectangular - Wood - Trim
Picture Window with Trim

Single Hung - Rectangular - Wood - Trim
Single Hung Window with Trim

Double Hung - Rectangular - Wood - Trim
Double Hung Window with Trim

Single Casement - Rectangular - Wood - Trim
Single Casement Window with Trim

Single Casement - Rectangular - Wood - Reverse - Trim
Single Casement Window, Out Swing, with Trim

Double Casement - Rectangular - Wood - Trim
Double Casement Window with Trim

GENERAL TOOLS - FLOOR SLABS

1ST FLOOR

Floor_Concrete

Floor_Concrete_Sloped
Use this Slab for Sloped Conditions. Shrinkwrap Material and Slab Style Display Properties have been modified for optimum

Floor_Assembly_0.75_Sub-Floor_0.5_Tile_Marble

Floor_Assembly_0.75_Sub-Floor_0.5_Tile_Terra_Cotta

Floor_Assembly_0.75_Sub-Floor_0.5_Hardwood_Dark

Floor_Concrete_8x10_Footing

Floor_Assembly_0.75_Sub-Floor_0.5_Tile_Marble

Floor_Assembly_0.75_Sub-Floor_0.5_Hardwood_Maple



Fence - Catwalk - Example
Example of how to create a catwalk using a Structural Member Style. Use Top Center Justification for best results.

LADDERS

Fence_Stair_Ladder_Attic_Access_1

Fence - Stair - Steel - Ladder - 1
Simple Square Tube

Fence - Stair - Steel - Ladder - 2
Round Rungs

Fence - Stair - Steel - Ladder - 2 - Brackets
Round Rungs and Wall Mount Brackets

Industrial_Ladder_Caged
Structural Member Style customized to produce an Industrial Caged Ladder.

ANNOTATION

ARCHdigm_Anno_Arrow_Stair_1

Tag - Stair Riser Number
Adds a Single Line Tag for Labeling an MBlock.

COMPONENTS

E_Furn_Bed_Canopy_Patio_89x77

I_Furn_Bed_California_King_Modern_1

I_Furn_Bed_Double_1

I_Furn_Bed_King_2

MATTRESSES

I_Furn_Bed_4 Post Bed

COOKING APPLIANCES

RANGES - VIKING

I_APPL_RANGE_VIKING_VGRC605-6QD_60W
6 Burners with Charbroiler and Griddle in center

I_APPL_RANGE_VIKING_VGRC365-6BD_36W
6 Burners with option for Charbroiler or Griddle in center

I_APPL_RANGE_VIKING_VGIC305-4B_30W
4 Burners

I_APPL_RANGE_VIKING_VGIC245-4B_24W
4 Burners

RANGES - WOLF

I_APPL_RANGE_WOLF_R606F_60W
6 Burners with France Top in place of column 3 and 4

DOORS - ENTRY SYSTEMS - SECONDARY

GLIDING

Openings - Entry - Gliding - OXXO - Panel 1x1vsq - Trim
Residential Gliding Entry Doors

Openings - Entry - Gliding - OXXO - 4 Transom - Trim
Residential Gliding Entry Doors with Transom

Openings - Entry - Gliding - 3 - Trim
Residential Entry Door

Openings - Entry - Gliding - 5 - Trim
Residential Entry Door

Openings - Entry - Gliding - Double - 2 Sidelight - Trim
Residential Entry Door with 2 Sidelights

Openings - Entry - Gliding - 4 - Trim
Residential Entry Door

DOORS - INTERIOR - MODERN

SINGLE HINGED

Interior - Hinged - Single - Modern - Panel 1x6s - Trim
Single hinged interior door with trim. The Panel for this Door is entirely based on a DWA Style with

Interior - Hinged - Single - Modern - Panel 1x6s3 - Trim
Single hinged interior door with trim. The Panel for this Door is entirely based on a DWA Style with

Interior - Hinged - Single - Modern - Panel 3x1s - Trim
Single hinged interior door with trim. The Panel for this Door is entirely based on a DWA Style with

DOUBLE HINGED

Interior - Hinged - Double - Modern - Panel 1x6s - Trim
Double hinged interior door with trim

Interior - Hinged - Double - Modern - Panel 1x6s2 - Trim
Double hinged interior door with trim

GENERATION 1 CABINETS

BASE FORMS

Base Cabinet - 2-Face
Uses a Custom Wall Style to create an Island Base Cabinet

Base Cabinet - Standard
Uses a Custom Wall Style to create a Standard Wall Side Base Cabinet

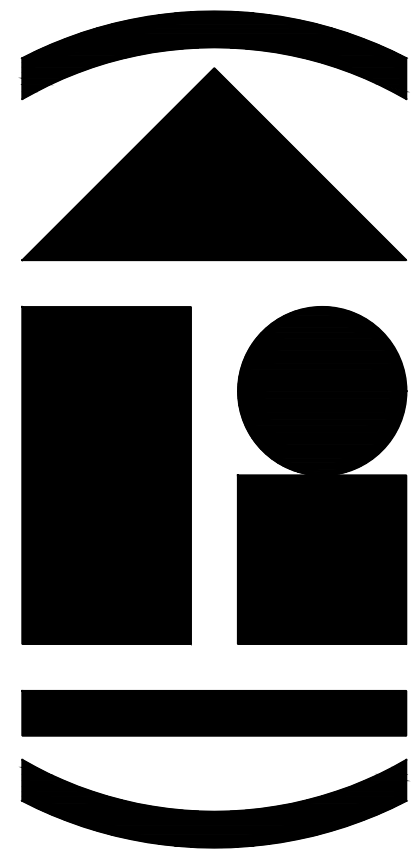
Base Cabinet - Standard - Outdoor
OUTDOOR - Fixed Base and Body Heights with Adjustable Splash Height

Base Cabinet - Standard - No Splash - Outdoor
OUTDOOR - Adjustable Body Height. No Splash.

kitchen_base_cab_34
Fixed Base and Body Heights with Adjustable Splash Height

Base Cabinet + Bar Top
Uses a Custom Wall Style to create an Island Base Cabinet with Higher Bar top for Stools. Use Height to control Bar height and Width to Control Bar width

Base Cabinet Bar Top
Uses a Custom Wall Style to create a Bar Top over a Wall - no Cabinetry Under

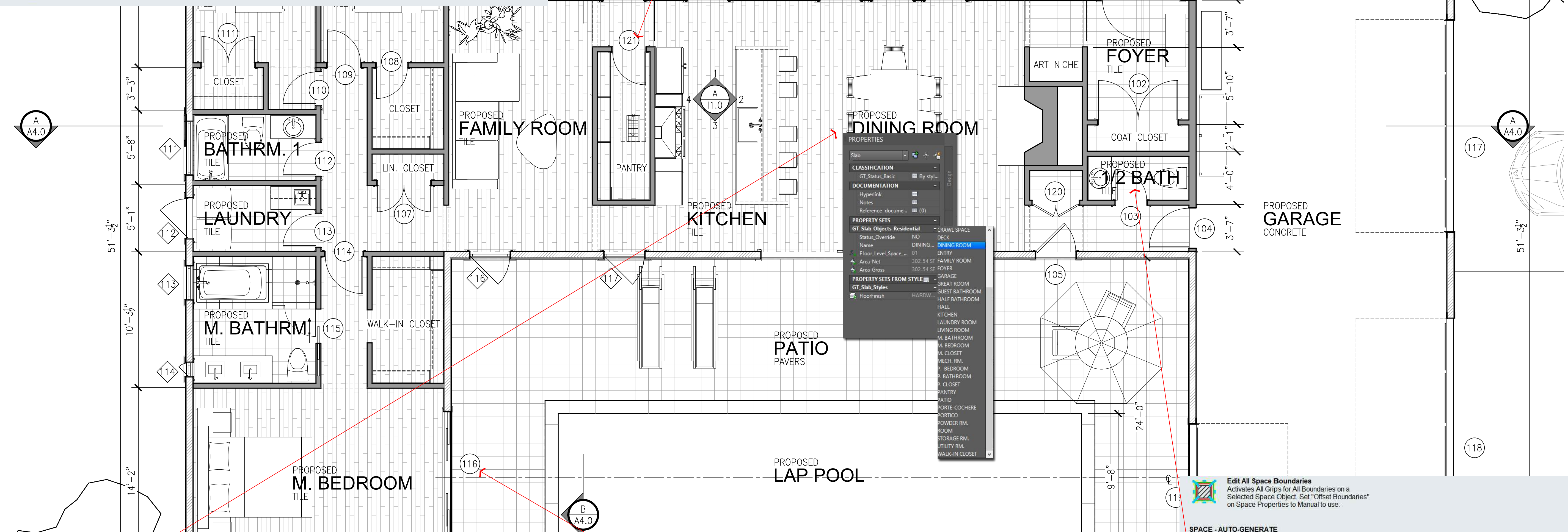
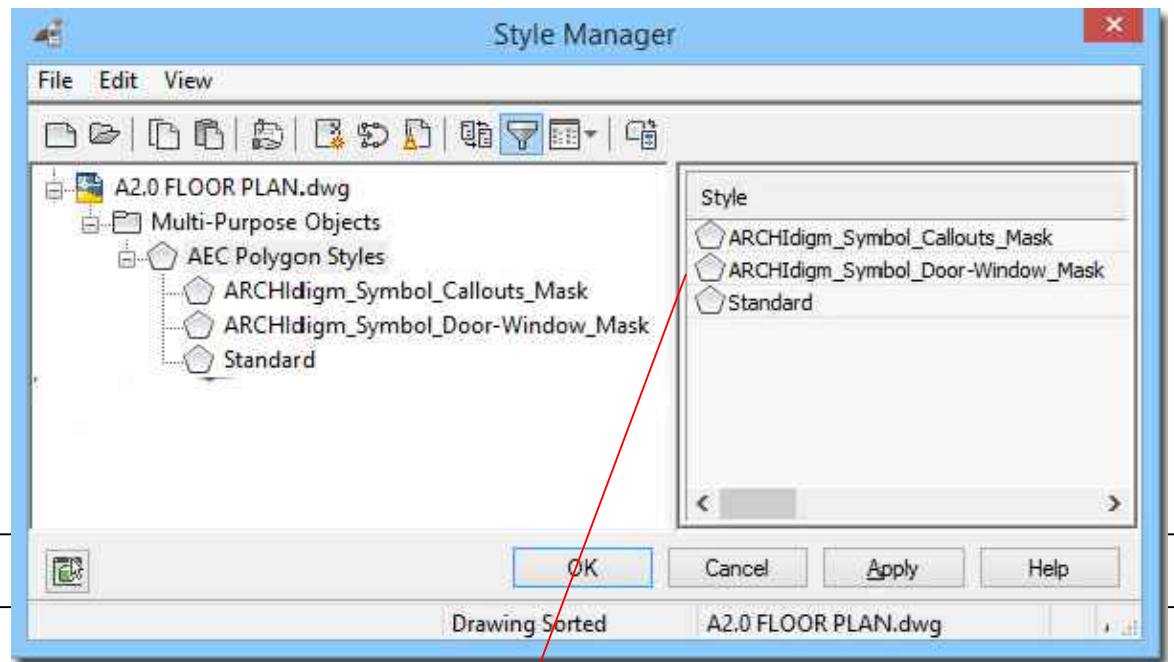


ARCHidigm
AutoCAD Architecture Content
SAN FRANCISCO, CA.
www.archidigm.com
info@archidigm.com

NUMEROUS CATALOGS FOR DIFFERENT TASKS

MANY OF OUR MVBLOCK OPTIONS, INCLUDING TAGS, HAVE MASKS BASED ON AEC POLYGONS FOR IMPROVED LEGIBILITY IN PLAN VIEWS

- Exterior_New_0.5_Drop_Sliding_Horizontal_0.625_Gypsum**
Exterior New Stud Wall with 1/2" Horizontal Drop Siding 1/2" Plywood and 5/8" Gypsum Inside
- Exterior_New_0.5_Stucco_Gray_0.5_Gypsum**
Exterior New Stud Wall with 1/2" Stucco Siding 1/2" Plywood and 1/2" Gypsum Inside
- Exterior_New_0.5_Metal_Standing_Seam_Vertical_0.5_Gypsum**
Exterior New Stud Wall with 1/2" Vertical Standing Seam Metal Siding 1/2" Plywood and 1/2" Gypsum Inside
- Exterior_New_0.5_Board_and_Batten_White_Vertical_0.5_Gypsum**
Exterior New Stud Wall with 1/2" Board and Batten Siding 1/2" Plywood and 1/2" Gypsum Inside
- Exterior_New_0.5_Cedar_Vertical_0.5_Gypsum**
Exterior New Stud Wall with 1/2" Vertical Cedar Siding 1/2" Plywood and 1/2" Gypsum Inside
- Exterior_New_0.5_Cedar_Shingle_0.5_Gypsum**
Exterior New Stud Wall with 1/2" Cedar Shingle Siding 1/2" Plywood and 1/2" Gypsum Inside
- Exterior_New_0.5_T1-11_0.5_Gypsum**
Exterior New Stud Wall with 1/2" T1-11 Plywood Siding 1/2" Plywood and 1/2" Gypsum Inside



PROPERTIES

Slab

CLASSIFICATION
GT_Status_Basic

DOCUMENTATION
Hypertext
Notes
Reference document...

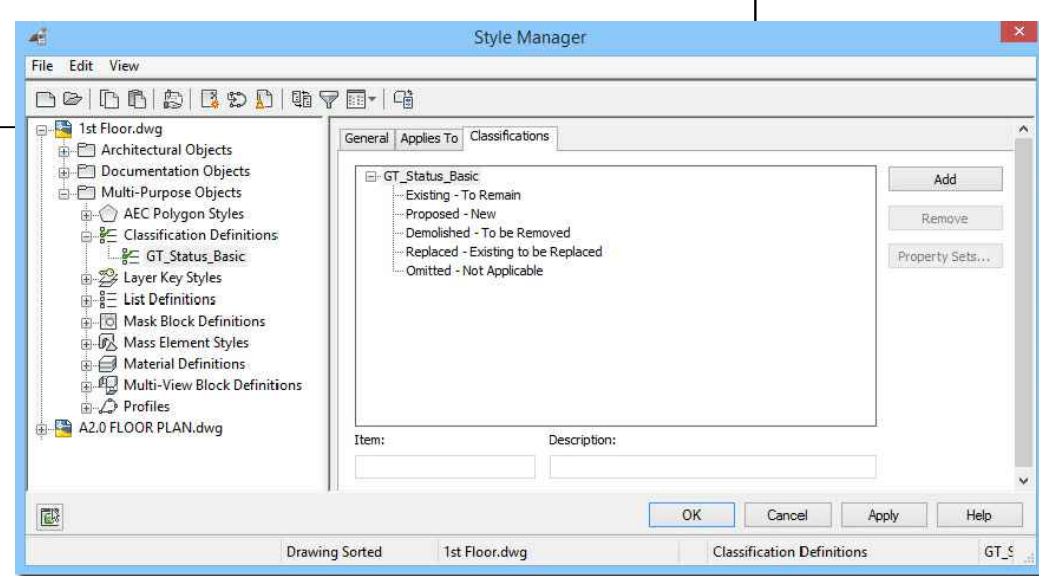
PROPERTY SETS
GT_Slab_Objects_Residential
Status Override NO
Name DINING... DINING ROOM
Floor Level Space... 01
Area-Net 302.54 SF FAMILY ROOM
Area-Gross 302.54 SF FOYER

PROPERTY SETS FROM STYLE
GT_Slab_Styles
Floor Finish HARDW...

- RESIDENTIAL**
- Floor Slab Tag - Residential - Basic 2**
Floor Slab Tag with Drop-down List for Room/Space Name. 3 digit Room/Space Number with Floor Number derived from Construct Level ID
 - Floor Slab Tag - Residential - Finish**
Floor Slab Tag with Drop-down List for Status and Room/Space Name. Tag reads Floor Finish by Material Definition Style. Tag reads Area in Square Feet.
 - Residential Floor Slab Areas Table**
Schedule set to pull data from ARCHidigm Floor Slab Styles and Tags. Use Floor Slab Room Label Tag to Populate Slabs with Data for Schedule.
- COMMERCIAL - BUSINESS**
- Floor Slab Tag - Business - Basic 2**
Floor Slab Tag with Drop-down List for Room/Space Name. 3 digit Room/Space Number with Floor Number derived from Construct Level ID
 - Floor Slab Tag - Business - Right**
Floor Slab Tag with Drop-down List for Status and Room/Space Name. Tag reads Floor Finish by Material Definition Style. Tag reads Area in Square Feet.

- Advanced D/W Tag Information**
These Tags and Schedules have been designed to work with Space Objects to capture Space/Room Names and Numbers. If you do not use Space Objects, just Delete the "ROOM" and "NO." columns from the Door and Window Schedules. Door and Window Marks/Numbers use the Project Navigator Level ID as a prefix. If you don't use the Project Navigator these numbers will only display 2 digits. These Tags and Schedules have also been designed to use the Level ID Assignment for Constructs in the Project Navigator to determine the Prefix for Marks - such as "2" for 2nd Floor (201) or "B" for Basement. (B01)
- Window Number**
ARCHidigm modified Window Tag with Mask Block
- Window Schedule - Residential**
Schedule set to pull data from ARCHidigm Window Styles and Tags. Use Window Number Tag to Populate Window Data for Schedule.
- Door Number**
ARCHidigm modified Door Tag with Mask Block
- Door Schedule - Residential**
Schedule set to pull data from ARCHidigm Door Styles and Tags. Use Door Number Tag to Populate Door Data for Schedule.
- Door Schedule - Commercial**
Schedule set to pull data from ARCHidigm Door Styles and Tags. Use Door Number Tag to Populate Door Data for Schedule.

- Edit All Space Boundaries**
Activates All Grips for All Boundaries on a Selected Space Object. Set "Offset Boundaries" on Space Properties to Manual to use.
- SPACE - AUTO-GENERATE**
Auto-Generate Space Information
Note that the Auto-Generated Space Object may find Objects on Layers that are Off or Frozen. These Objects or Object Styles must be set to not BOUND SPACES. The Demo Wall Styles in this kit, for example, are set to not Bound Spaces. You can set individual Objects on the Properties Palette.
- Proposed Space - Auto**
General Purpose Space Style for All PROPOSED Spaces/Rooms in a Residential Project. Define Space Names after Placement.
- Existing Space - Auto**
General Purpose Space Style for All EXISTING Spaces/Rooms in a Residential Project. Define Space Names after Placement.
- Demolished Space - Auto**
Schedule designed for Auto-Generated Spaces that only account for Interior Net Areas
- Space Areas Table**
Schedule designed for Manually Created Spaces that have Offset Values for Gross Areas
- Space Occupancy Table**
Occupancy Group, Load Factor and Number of Occupants. Space(s) require use of Space Occupancy Tag and a Space Name Tag to work properly.



PROPOSED 1ST FLOOR PLAN

SCALE: 1/4" = 1'-0"

PROJECT:
MODERN FARMHOUSE
EXAMPLE PROJECT
AUTOCAD ARCHITECTURE

ISSUED FOR:
DEMONSTRATION

DATE: 5/21/24

SCALE: AS NOTED

DRAWING TITLE:
FLOOR PLAN

SHEET NO.

A2.0

A2.0 FLOOR PLAN.DWG

NUMEROUS CATALOGS FOR DIFFERENT TASKS

OUR 2D "CLIP-ART" MVBLOCKS COME WITH TWO BLOCKS: ONE FOR LINEWORK AND ONE FOR AN OUTLINE MASK BASED ON AN AECPOLYGON STYLE. FILL STYLE CAN BE CONTROLLED OR TURNED OFF. OUR CUSTOMIZED MATERIAL DEFINITION STYLES AND CORRESPONDING 2D SECTION/ELEVATION STYLES OFFER NUMEROUS LAYER PROPERTY CONTROLS FOR BETTER SECTION AND ELEVATION RESULTS.

Fireplace - Mantel - Wood - 1
Slab Style with 4 inch Edge Profile (3 Sides) for Deep Mantels.

CHIMNEY PIPES

- 6 Inch Diameter Pipe
- 8 Inch Diameter Pipe
- 10 Inch Diameter Pipe
- 12 Inch Diameter Pipe

CHIMNEY CAPS

- Appliances_fireplace_chimney_cap_rectangular_m
Created from a Roof Object, Slab Object and Curtain Wall Object. Explode to Adjust. Use Stretch Command in Plan View to change Width or Depth.
- 6 Inch Diameter Cap
Created from a custom Member Style using custom Member Shape Profiles. Explode to Adjust Heights with Grips. Use MemberShape to adjust diameters.
- 8 Inch Diameter Cap
Created from a custom Member Style using custom Member Shape Profiles. Explode to Adjust Heights with Grips. Use MemberShape to adjust diameters.

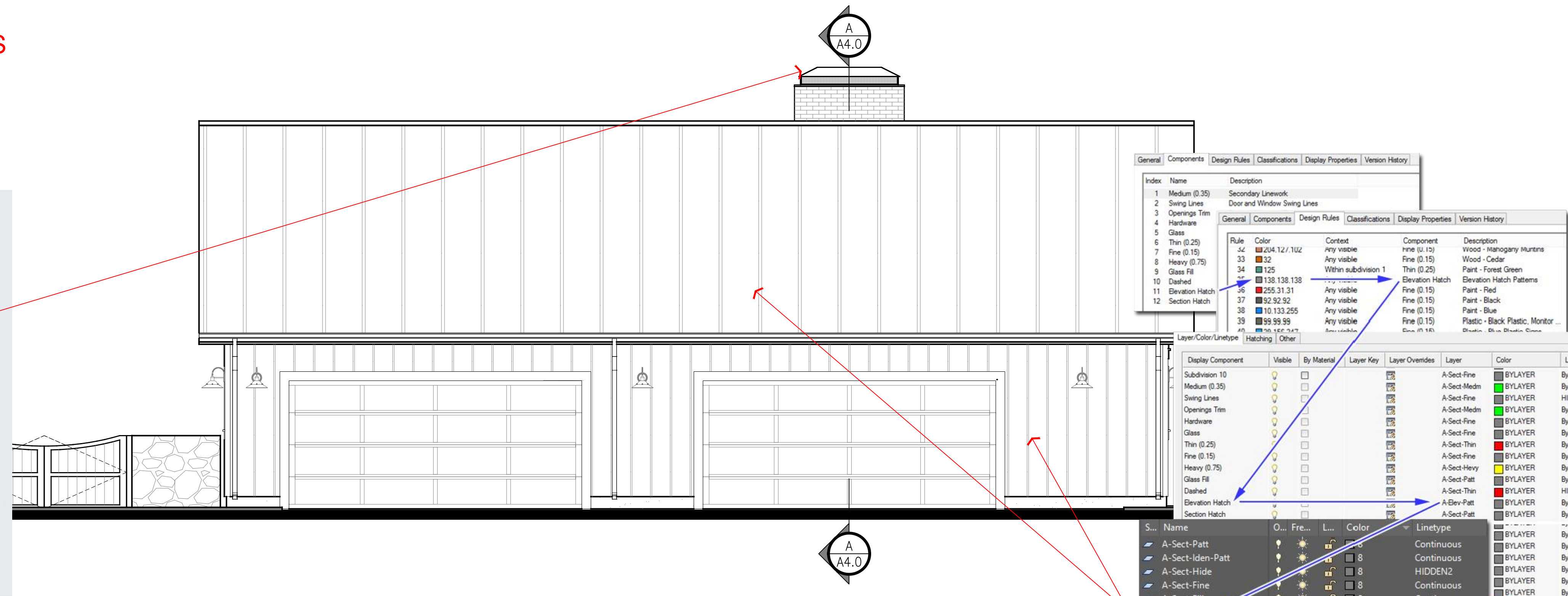
FIREPLACES

WALL STYLE

- Appliances_fireplace_mass
Inserts a Classic Fireplace Massing based on a Wall Style. Use Wall Modifier Style to modify firebox.

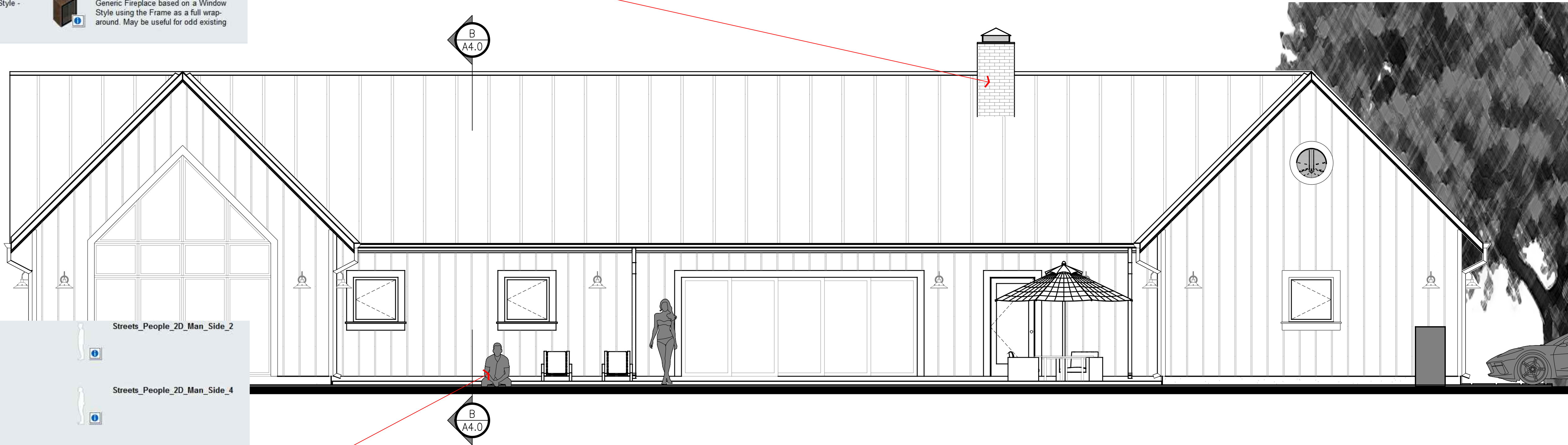
DOOR STYLE - CLASSIC FIREPLACE

- Appliance - Fireplace
Classic Fireplace based on a Door Style - 20.5 inch deep firebox.
- Appliance - Fireplace
Classic Fireplace with Modern Sunround Profile. Based on a Door Style - 20.5 inch deep firebox.
- Appliance - Fireplace - 14 Inch Deep
Classic Fireplace based on a Door Style - 14 inch deep firebox.
- Appliance - Fireplace
Generic Fireplace based on a Window Style using the Frame as a full wrap-around. May be useful for odd existing



PROPOSED NORTH ELEVATION

SCALE: 1/4" = 1'-0"



PROPOSED EAST ELEVATION

SCALE: 1/4" = 1'-0"

Streets_People_2D_Man_Side_1

Streets_People_2D_Man_Side_2

Streets_People_2D_Man_Side_3

Streets_People_2D_Man_Side_4

Streets_People_2D_Man_Side_5

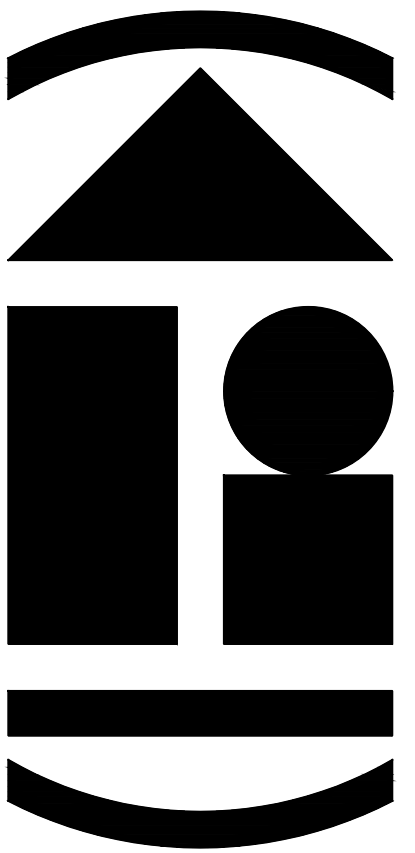
Streets_People_2D_Man_Side_6

Streets_People_2D_Man_Side_7

Streets_People_2D_Man_Side_8

Streets_People_2D_Man_Sitting_1

Streets_People_2D_Man_Sitting_2



ARCHidigm
AutoCAD Architecture Content
SAN FRANCISCO, CA.
www.archidigm.com
info@archidigm.com

PROJECT: **MODERN FARMHOUSE**
EXAMPLE PROJECT
AUTOCAD ARCHITECTURE

ISSUED FOR:
DEMONSTRATION

DATE: 5/21/24

SCALE: AS NOTED

DRAWING TITLE:

ELEVATIONS

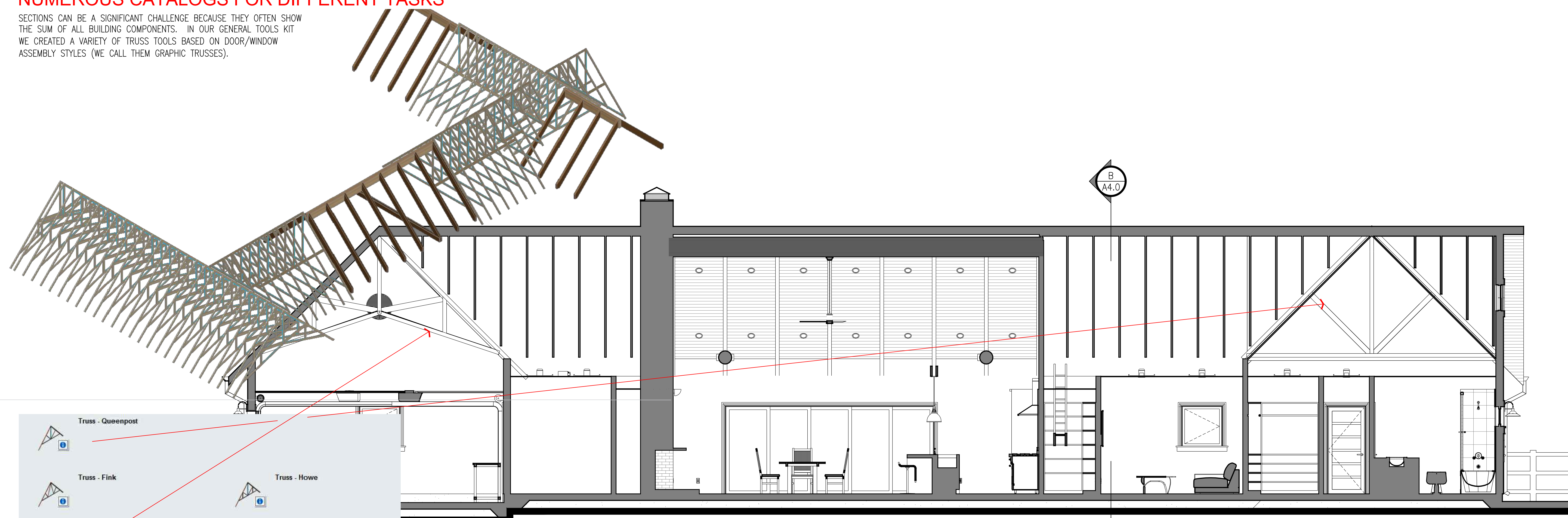
SHEET NO.

A3.0

A3.0 ELEVATIONS.DWG

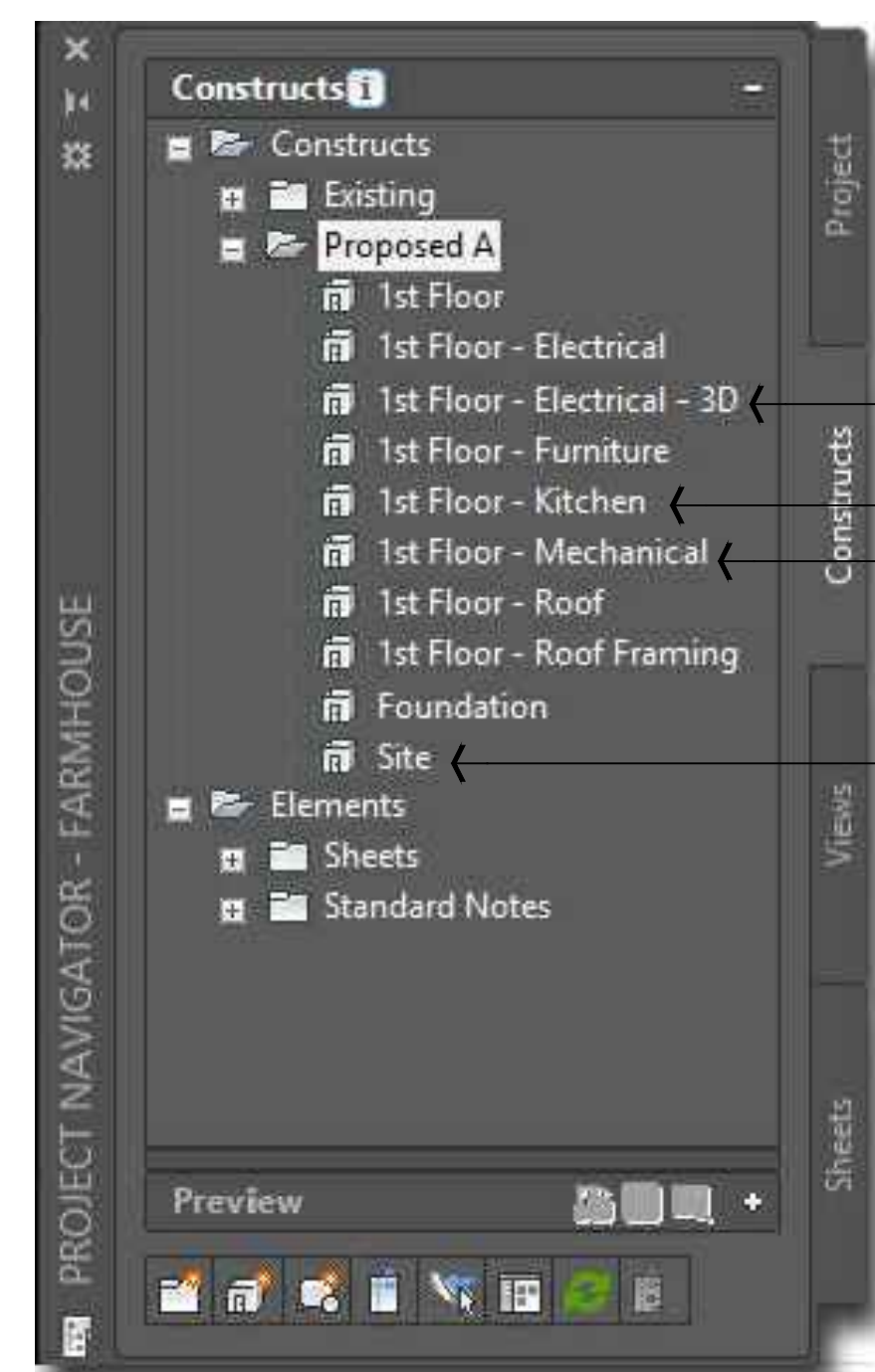
NUMEROUS CATALOGS FOR DIFFERENT TASKS

SECTIONS CAN BE A SIGNIFICANT CHALLENGE BECAUSE THEY OFTEN SHOW THE SUM OF ALL BUILDING COMPONENTS. IN OUR GENERAL TOOLS KIT WE CREATED A VARIETY OF TRUSS TOOLS BASED ON DOOR/WINDOW ASSEMBLY STYLES (WE CALL THEM GRAPHIC TRUSSES).



PROPOSED
SECTION A-A

1/4" = 1'-0"



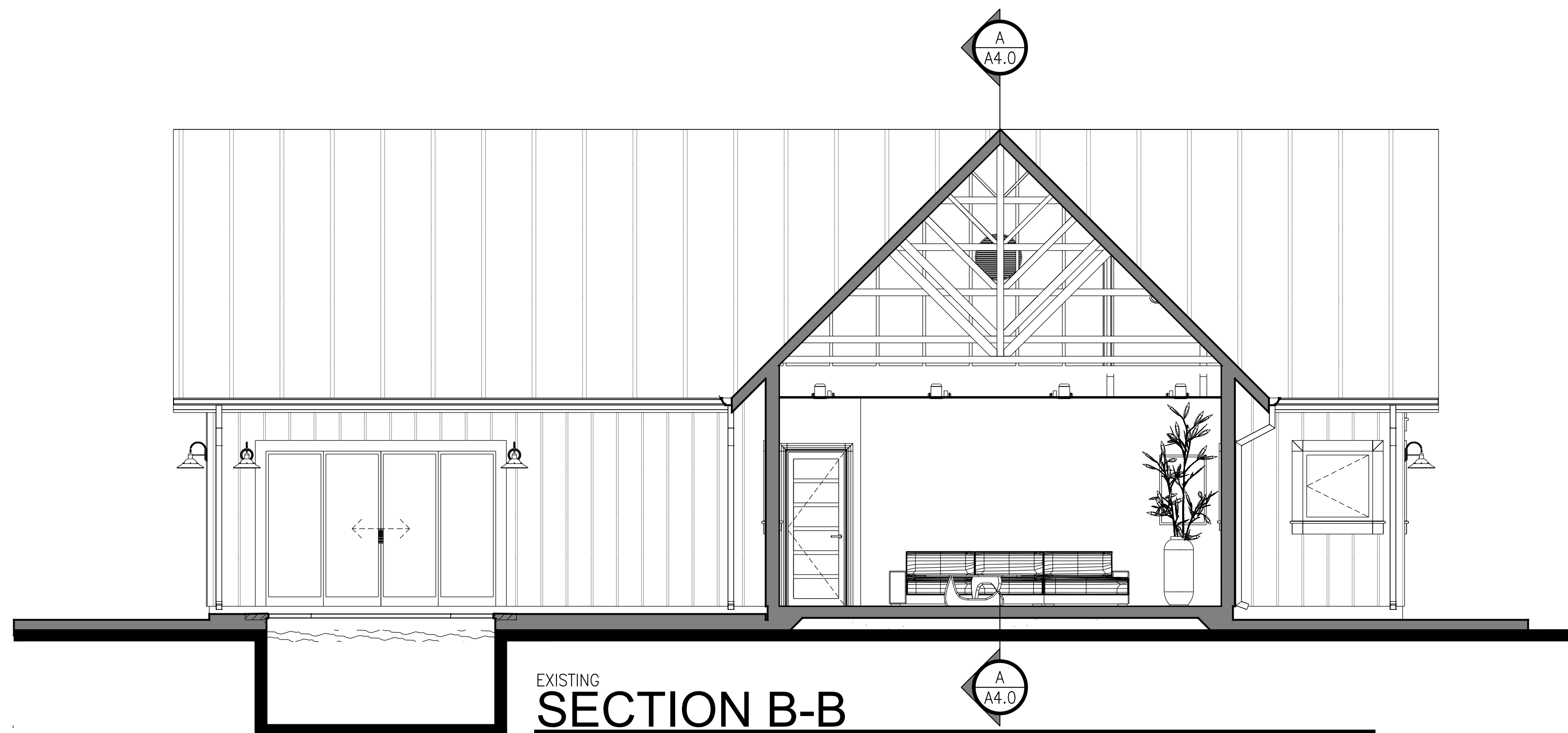
USING TOO MUCH HIGHER QUALITY CONTENT CAN BE A DRAIN ON SYSTEM RESOURCES SO WE RECOMMEND THAT YOU ORGANIZE YOUR WORK ACCORDINGLY.

FOR RENDER LIGHTING

FOR ALTERNATE AND/OR HIGH DETAIL SOLUTIONS

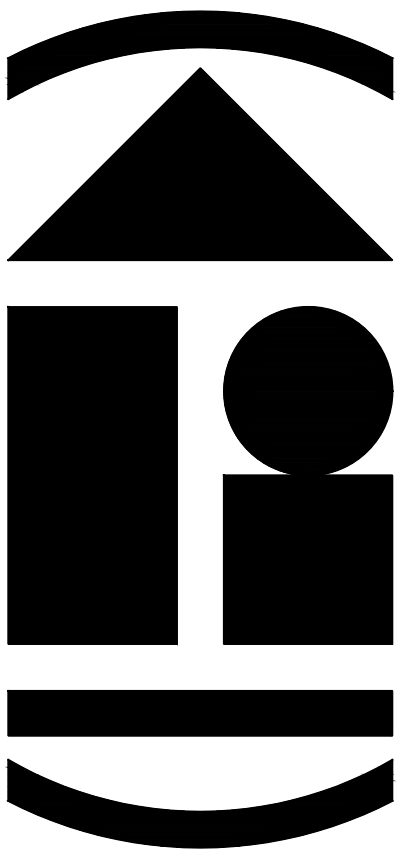
OUR ELECTRICAL KIT OFFERS BASIC MECHANICAL EQUIPMENT AND DUCTS FOR PRESENTATION PURPOSES ONLY. USE MEP PRODUCTS FOR ENGINEERING WORK.

ITEMS FROM OUR STREETS KIT.



EXISTING
SECTION B-B

1/4" = 1'-0"



ARCHidigm
AutoCAD® Architecture Content
SAN FRANCISCO, CA.
www.archidigm.com
info@archidigm.com

PROJECT:
MODERN FARMHOUSE
EXAMPLE PROJECT
AUTOCAD ARCHITECTURE

ISSUED FOR:
DEMONSTRATION

DATE: 5/21/24

SCALE: AS NOTED

DRAWING TITLE:

SECTIONS

SHEET NO.

A4.0

A4.0 SECTIONS.DWG

NUMEROUS CATALOGS FOR DIFFERENT TASKS

CUSTOM PROPERTY DEFINITIONS, LIST DEFINITIONS, CLASSIFICATION DEFINITIONS, PROPERTY DATA FORMATS, TAGS, TEXT STYLES AND SCHEDULES SO YOU CAN CREATE A MORE COMPLETE SET OF CONSISTENT DOCUMENTS.

STATUS CLASSIFICATION

NUMEROUS SCHEDULE STYLE COLUMNS (REMOVE THOSE YOU DON'T NEED)

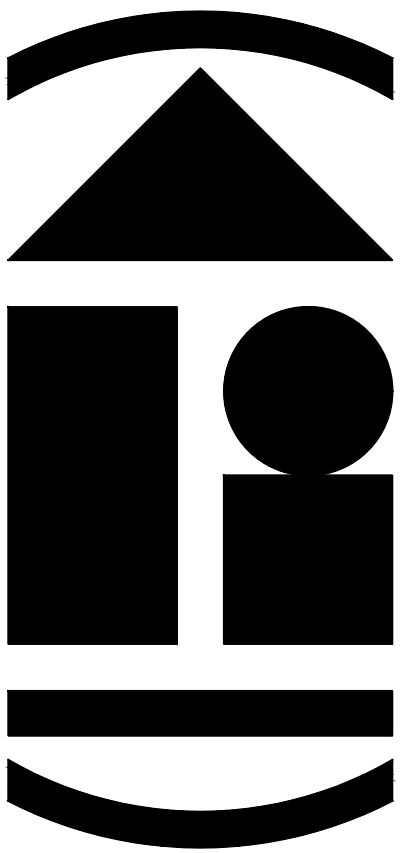
SORTING ORDER (ALTER PRIORITY OR REMOVE WHAT YOU DON'T NEED)

		SPACE AREAS TABLE								
STATUS	ROOM	NO.	LENGTH	WIDTH	HEIGHT	NET AREA	GROSS AREA	GROSS DELTA		
EXISTING	GARAGE	125	20'-0"	51'-3"	10'-0"	955.54 SF	1025.83 SF	0.00 SF		
PROPOSED	FOYER	101	7'-9"	9'-7"	10'-0"	70.07 SF	73.95 SF	73.95 SF		
	COAT CLOSET	102	7'-9"	2'-9"	10'-0"	15.42 SF	21.31 SF	21.31 SF		
	HALL	103	4'-9"	4'-0"	10'-0"	16.63 SF	19.00 SF	19.00 SF		
	ART NICHE	104	4'-9"	3'-0"	10'-0"	10.46 SF	14.20 SF	14.20 SF		
	FIRE PLACE	105	4'-9"	6'-0"	10'-0"	26.34 SF	28.60 SF	28.60 SF		
	LIVING ROOM	106	15'-7"	20'-0"	10'-0"	295.29 SF	310.83 SF	310.83 SF		
	KITCHEN	107	12'-6"	20'-0"	10'-0"	236.71 SF	249.17 SF	249.17 SF		
	PANTRY	108	4'-0"	11'-3"	10'-0"	57.00 SF	45.00 SF	45.00 SF		
	DINING ROOM	109	15'-8"	20'-0"	10'-0"	239.87 SF	255.50 SF	255.50 SF		
	BEDROOM 2	110	10'-2"	12'-11"	10'-0"	111.75 SF	130.47 SF	130.47 SF		
	BEDROOM 1	111	9'-10"	16'-1"	10'-0"	124.59 SF	135.49 SF	135.49 SF		
	CLOSET 2	112	6'-2"	3'-6"	10'-0"	16.82 SF	21.91 SF	21.91 SF		
	MAIN HALL	113	10'-1"	14'-8"	10'-0"	77.77 SF	95.76 SF	95.76 SF		
	CLOSET 1	114	5'-10"	6'-6"	10'-0"	33.53 SF	38.02 SF	38.02 SF		
	BATHROOM 1	115	9'-10"	5'-4"	10'-0"	46.56 SF	52.74 SF	52.74 SF		
	LINEN CLOSET	116	5'-10"	2'-5"	10'-0"	10.88 SF	13.80 SF	13.80 SF		
	LAUNDRY ROOM	117	9'-10"	5'-5"	10'-0"	46.56 SF	52.74 SF	52.74 SF		
	M. BATHROOM	118	10'-2"	10'-4"	10'-0"	89.63 SF	105.70 SF	105.70 SF		
	HALL	119	3'-6"	10'-0"	10'-0"	34.97 SF	34.97 SF	34.97 SF		
	WALK-IN CLOSET	120	6'-4"	10'-0"	10'-0"	52.34 SF	63.12 SF	63.12 SF		
	M. BEDROOM	121	20'-0"	14'-2"	10'-0"	258.88 SF	282.50 SF	282.50 SF		
	BACK HALL	122	12'-6"	4'-0"	10'-0"	43.75 SF	50.00 SF	50.00 SF		
	UTILITY RM.	123	4'-9"	3'-0"	10'-0"	8.96 SF	14.20 SF	14.20 SF		
	POWDER RM.	124	7'-9"	3'-8"	10'-0"	25.83 SF	28.74 SF	28.74 SF		
					2906.15 SF	3163.55 SF	2137.72 SF			

DOOR SCHEDULE														
MARK	TYPE	PANEL						OPERATION	DIRECTION	PLACEMENT	ROOM	NO.	HARDWARE GROUP	REMARKS
		SIZE	WIDTH	HEIGHT	THICKNESS	GLAZING	MATERIAL							
101	A	72 x 80	6'-0"	6'-8"	1 3/4"	YES	WOOD	SINGLE HINGED ENTRY WITH SIDELIGHT	SEE PLAN	EXTERIOR	FOYER	101	1	
102	B	PR 36 x 80	6'-0"	6'-8"	1 3/8"	NO	WOOD	DOUBLE HNGED	NA	INTERIOR	FOYER	101	2	
103	C	28 x 80	2'-4"	6'-8"	1 3/8"	NO	WOOD	SINGLE HINGED	LEFT	INTERIOR	BACK HALL	122	3	
104	D	36 x 80	3'-0"	6'-8"	1 3/8"	NO	WOOD	SINGLE HINGED	LEFT	INTERIOR	BACK HALL	122	4	10 MIN. WITH SMOKE GASKET, SELF-CLOSER
105	E	36 x 80	3'-0"	6'-8"	1 3/4"	YES	WOOD	SINGLE HINGED	LEFT	EXTERIOR	BACK HALL	122	5	
106	F	192 x 80	16'-0"	6'-8"	1 3/4"	YES	ALUMINUM CLAD	FIVE GLIDING	SEE PLAN	EXTERIOR	LIVING ROOM	106	6	
107	B	PR 24 x 80	4'-0"	6'-8"	1 3/8"	NO	WOOD	DOUBLE HNGED	NA	INTERIOR	MAIN HALL	113	2	
108	C	28 x 80	2'-4"	6'-8"	1 3/8"	NO	WOOD	SINGLE HINGED	RIGHT	INTERIOR	CLOSET 1	114	3	
109	C	30 x 80	2'-6"	6'-8"	1 3/8"	NO	WOOD	SINGLE HINGED	LEFT	INTERIOR	BEDROOM 2	110	3	
110	C	30 x 80	2'-6"	6'-8"	1 3/8"	NO	WOOD	SINGLE HINGED	LEFT	INTERIOR	BEDROOM 1	111	3	
111	B	PR 24 x 80	4'-0"	6'-8"	1 3/8"	NO	WOOD	DOUBLE HNGED	NA	INTERIOR	BEDROOM 1	111	2	
112	C	30 x 80	2'-6"	6'-8"	1 3/8"	NO	WOOD	SINGLE HINGED	LEFT	INTERIOR	BATHROOM 1	115	3	
113	C	30 x 80	2'-6"	6'-8"	1 3/8"	NO	WOOD	SINGLE HINGED	LEFT	INTERIOR	LAUNDRY ROOM	117	3	
114	C	34 x 80	2'-10"	6'-8"	1 3/8"	NO	WOOD	SINGLE HINGED	LEFT	INTERIOR	HALL	119	3	
115	G	30 x 80	2'-6"	6'-8"	1 3/8"	NO	WOOD	SINGLE POCKET	LEFT	INTERIOR	M. BATHROOM	118	7	
116	H	120 x 80	10'-0"	6'-8"	1 3/4"	YES	ALUMINUM CLAD	OXXO	SEE PLAN	EXTERIOR	M. BEDROOM	121	8	
117	I	192 x 84	16'-0"	7'-0"	2 1/8"	YES	ALUMINUM CLAD	SECTIONAL	NA	EXTERIOR	GARAGE	125	9	
118	I	192 x 84	16'-0"	7'-0"	2 1/8"	YES	ALUMINUM CLAD	SECTIONAL	NA	EXTERIOR	GARAGE	125	9	
119	J	96 x 84	8'-0"	7'-0"	2 1/8"	YES	ALUMINUM CLAD	SECTIONAL	NA	EXTERIOR	GARAGE	125	10	
120	B	PR 21 x 80	3'-6"	6'-8"	1 3/8"	NO	WOOD	DOUBLE HNGED	NA	INTERIOR	BACK HALL	122	2	
121	C	30 x 80	2'-6"	6'-8"	1 3/8"	NO	WOOD	SINGLE HINGED	LEFT	INTERIOR	PANTRY	108	3	

ELECTRICAL SCHEDULE				
SYMBOL	DEFINITION	ROOM	NO.	QUANTITY
⊕	110V OUTLET - 2 PLEX	BEDROOM 2	110	6
⊕	110V OUTLET - 2 PLEX	M. BEDROOM	121	5
⊕	110V OUTLET - 2 PLEX	BEDROOM 1	111	2
⊕ _{GFI}	110V OUTLET - 2 PLEX - GROUND FAULT CIRCUIT INTERRUPTER	M. BATHROOM	118	2
⊕	110V OUTLET - 2 PLEX	LIVING ROOM	106	1
⊕	110V OUTLET - 2 PLEX	BACK HALL	122	1
⊕	110V OUTLET - 2 PLEX	FOYER	101	2
⊕ _{GFI}	110V OUTLET - 2 PLEX - GROUND FAULT CIRCUIT INTERRUPTER	KITCHEN	107	4
⊕	110V OUTLET - 4 PLEX	DINING ROOM	109	3
⊕	110V OUTLET - 4 PLEX	LIVING ROOM	106	4
⌂	54" CEILING FAN - BASED UPON THE MINKA AIRE GEAR MODEL	LIVING ROOM	106	1
🔔	DOORBELL	LIVING ROOM	106	1
🔔	DOORBELL BUZZER	SEE PLAN	N.A.	1
🌀	EXHAUST FAN	BATHROOM 1	115	1
🌀	EXHAUST FAN	LAUNDRY ROOM	117	1
🌀	EXHAUST FAN	POWDER RM.	124	1
🌀	EXHAUST FAN	M. BATHROOM	118	1
☾	PENDANT CEILING LIGHT - BARN STYLE	KITCHEN	107	4
⬡	RECESSED CEILING LIGHT	KITCHEN	107	12
⬡	RECESSED CEILING LIGHT	M. BEDROOM	121	12
⬡	RECESSED CEILING LIGHT	BEDROOM 2	110	6
⬡	RECESSED CEILING LIGHT	BEDROOM 1	111	6
⬡	RECESSED CEILING LIGHT	DINING ROOM	109	10
⬡	RECESSED CEILING LIGHT	MAIN HALL	113	2
⬡	RECESSED CEILING LIGHT	POWDER RM.	124	1
⬡	RECESSED CEILING LIGHT	BACK HALL	122	3
⬡	RECESSED CEILING LIGHT	HALL	103	1
⬡	RECESSED CEILING LIGHT	FOYER	101	4
⬡	RECESSED CEILING LIGHT	LIVING ROOM	106	16
⚡ _{v.s.}	SWITCH WITH VACANCY SENSOR	MAIN HALL	113	2
⚡ _{v.s.}	SWITCH WITH VACANCY SENSOR	M. BATHROOM	118	1
⚡ ₄	SWITCH 4 - POLE DIMMER	KITCHEN	107	1
🔥	THERMOSTAT	MAIN HALL	113	1
🔥	THERMOSTAT	POWDER RM.	124	1
🏠	WALL SCONCE	LIVING ROOM	106	2
🏠	WALL SCONCE	POWDER RM.	124	1
🏠	WALL SCONCE - EXTERIOR - RETRO BARN - 14 INCH DIAMETER - BLACK	SEE PLAN	N.A.	22

WINDOW SCHEDULE												
MARK	TYPE	SIZE	WIDTH	HEIGHT	HEAD HEIGHT	GLAZING	MATERIAL	OPERATION	PLACEMENT	ROOM	NO.	REMARKS
101	A	36 x 36	3'-0"	3'-0"	6'-8"	DUAL PANE	ALUMINUM CLAD	SINGLE CASEMENT	EXTERIOR	LIVING ROOM	106	--
102	A	36 x 36	3'-0"	3'-0"	6'-8"	DUAL PANE	ALUMINUM CLAD	SINGLE CASEMENT	EXTERIOR	LIVING ROOM	106	--
103	A	36 x 36	3'-0"	3'-0"	6'-8"	DUAL PANE	ALUMINUM CLAD	SINGLE CASEMENT	EXTERIOR	LIVING ROOM	106	--
104	A	36 x 36	3'-0"	3'-0"	6'-8"	DUAL PANE	ALUMINUM CLAD	SINGLE CASEMENT	EXTERIOR	KITCHEN	107	--
105	A	36 x 36	3'-0"	3'-0"	6'-8"	DUAL PANE	ALUMINUM CLAD	SINGLE CASEMENT	EXTERIOR	DINING ROOM	109	--
106	A	36 x 36	3'-0"	3'-0"	6'-8"	DUAL PANE	ALUMINUM CLAD	SINGLE CASEMENT	EXTERIOR	DINING ROOM	109	--
107	A	36 x 36	3'-0"	3'-0"	6'-8"	DUAL PANE	ALUMINUM CLAD	SINGLE CASEMENT	EXTERIOR	BEDROOM 2	110	--
108	A	36 x 36	3'-0"	3'-0"	6'-8"	DUAL PANE	ALUMINUM CLAD	SINGLE CASEMENT	EXTERIOR	BEDROOM 2	110	--
109	A	36 x 36	3'-0"	3'-0"	6'-8"	DUAL PANE	ALUMINUM CLAD	SINGLE CASEMENT	EXTERIOR	BEDROOM 1	111	--
110	A	36 x 36	3'-0"	3'-0"	6'-8"	DUAL PANE	ALUMINUM CLAD	SINGLE CASEMENT	EXTERIOR	BEDROOM 1	111	--
111	B	48 x 18	4'-0"	1'-6"	6'-8"	DUAL PANE	ALUMINUM CLAD	PICTURE	EXTERIOR	BATHROOM 1	115	--
112	A	36 x 24	3'-0"	2'-0"	6'-8"	DUAL PANE	ALUMINUM CLAD	SINGLE CASEMENT	EXTERIOR	LAUNDRY ROOM	117	--
113	C	30 x 44	2'-6"	3'-8"	6'-8"	DUAL PANE	ALUMINUM CLAD	PICTURE	EXTERIOR	M. BATHROOM	118	--
114	A	12 x 36	1'-0"	3'-0"	6'-8"	DUAL PANE	ALUMINUM CLAD	SINGLE CASEMENT	EXTERIOR	M. BATHROOM	118	--
115	D	144 x 180	12'-0"	15'-0"	15'-0"	DUAL PANE	ALUMINUM CLAD	PICTURE	EXTERIOR	M. BEDROOM	121	CUSTOM STOREFRONT ASSEMBLY
116	A	36 x 36	3'-0"	3'-0"	6'-8"	DUAL PANE	ALUMINUM CLAD	SINGLE CASEMENT	EXTERIOR	DINING ROOM	109	--
117	A	36 x 36	3'-0"	3'-0"	6'-8"	DUAL PANE	ALUMINUM CLAD	SINGLE CASEMENT	EXTERIOR	DINING ROOM	109	--
118	A	36 x 36	3'-0"	3'-0"	7'-4"	DUAL PANE	ALUMINUM CLAD	SINGLE CASEMENT	EXTERIOR	GARAGE	125	--
119	A	36 x 36	3'-0"	3'-0"	7'-4"	DUAL PANE	ALUMINUM CLAD	SINGLE CASEMENT	EXTERIOR	GARAGE	125	--



ARCHidigm
AutoCAD Architecture Content
SAN FRANCISCO, CA.
www.archidigm.com
info@archidigm.com

PROJECT: **MODERN FARMHOUSE**
EXAMPLE PROJECT
AUTOCAD ARCHITECTURE

ISSUED FOR:
DEMONSTRATION

DATE: 5/21/24

SCALE: AS NOTED

DRAWING TITLE:

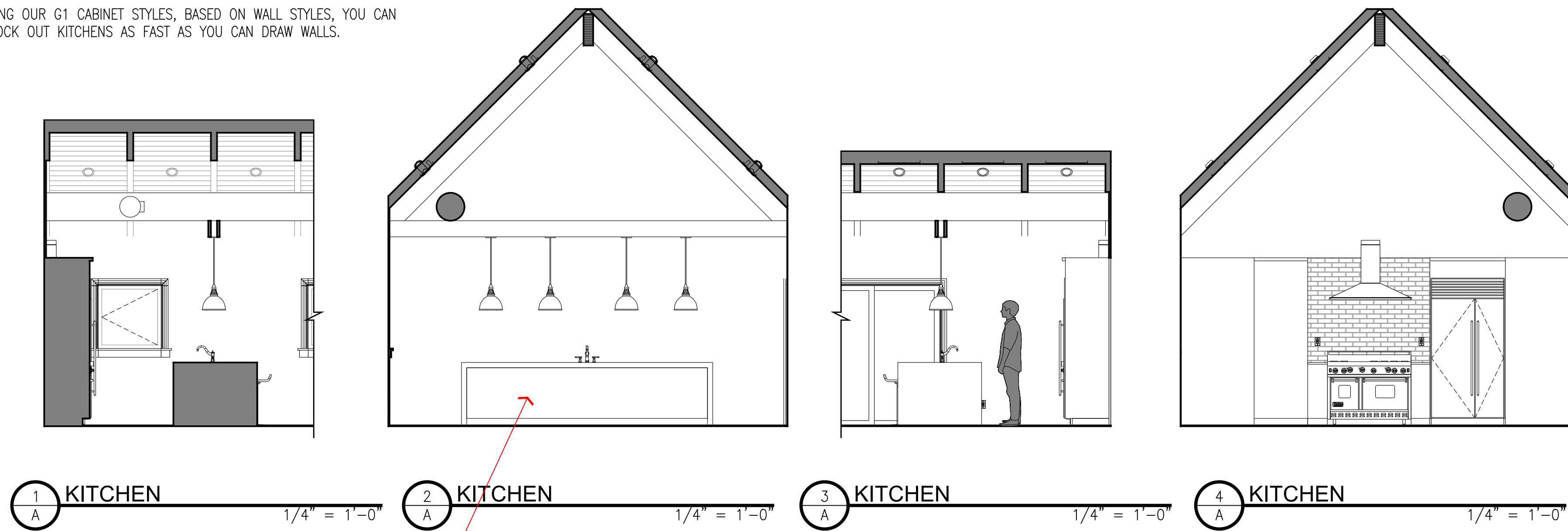
SCHEDULES

SHEET NO.

A5.0

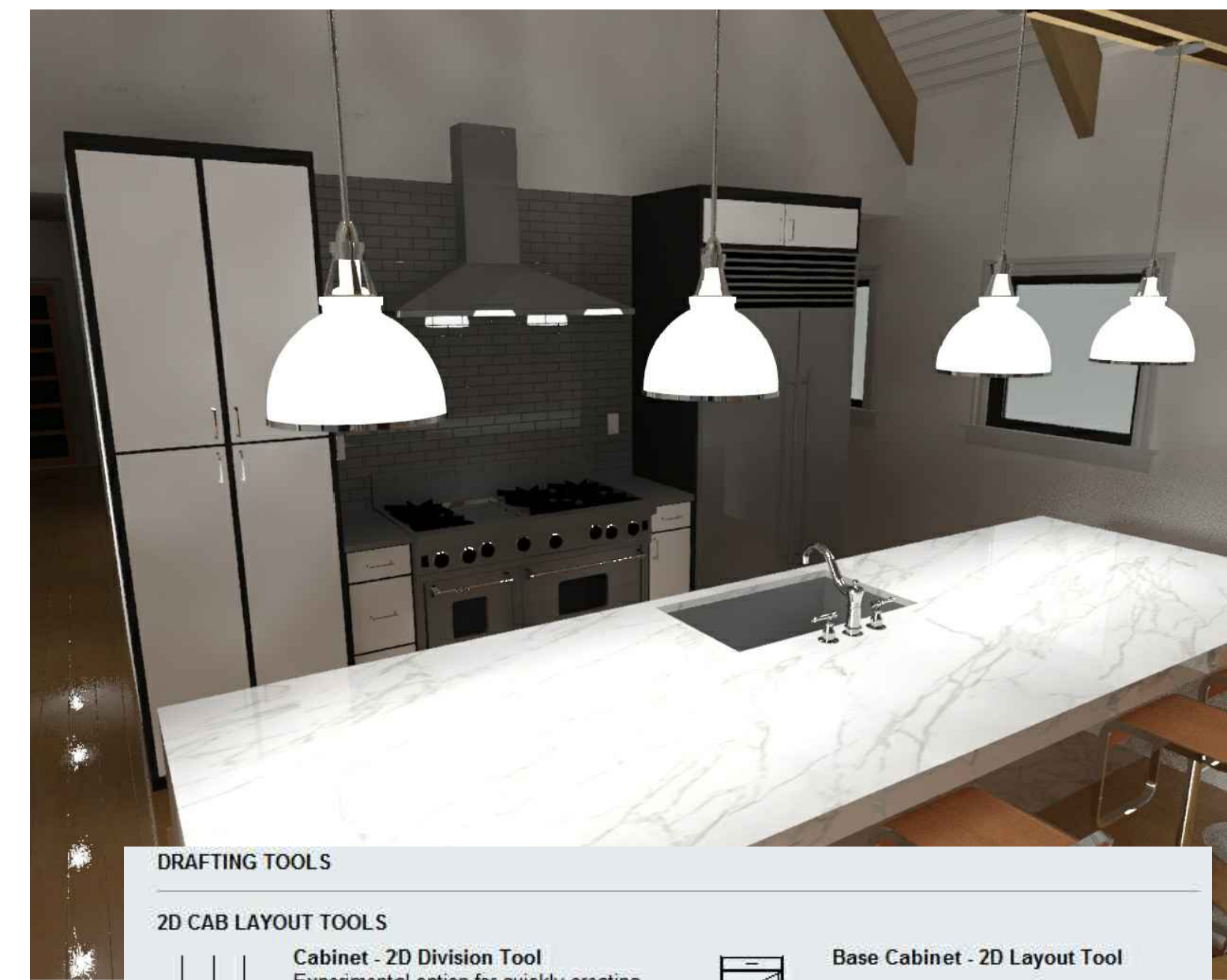
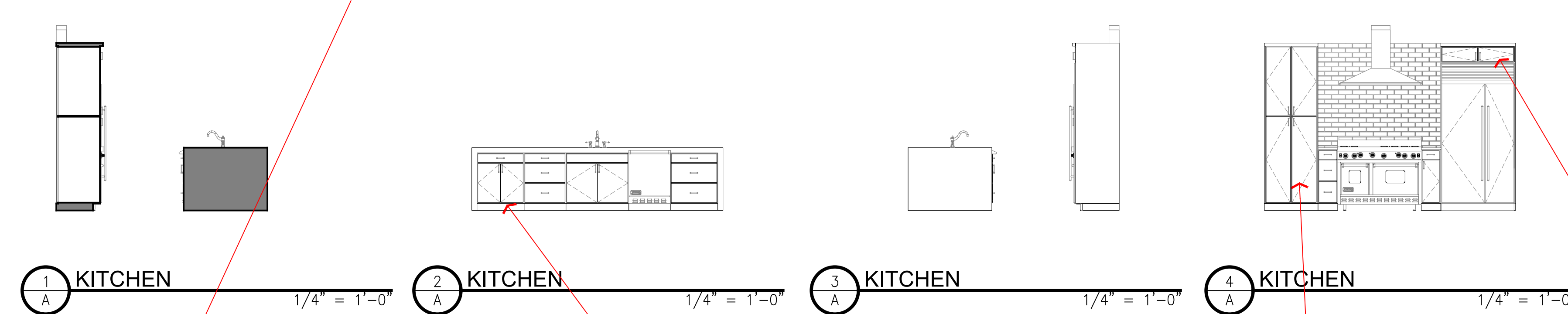
STANDARD DETAIL KITCHEN CABINETS LAYOUT

USING OUR G1 CABINET STYLES, BASED ON WALL STYLES, YOU CAN KNOCK OUT KITCHENS AS FAST AS YOU CAN DRAW WALLS.



HIGHER DETAIL KITCHEN CABINETS LAYOUT

FOR GREATER DETAILED CABINETS, WE OFFER SOLUTIONS BASED ON DOOR/WINDOW AND CURTAIN WALLS STYLES USING REAL DOOR STYLES FOR CABINET DOORS AND DRAWERS. WE ALSO OFFER 2D DYNAMIC BLOCK OPTIONS FOR QUICK CABINET LAYOUTS OVER 2D PROJECTED INTERIOR ELEVATIONS/SECTIONS.



DRAFTING TOOLS

2D CAB LAYOUT TOOLS

- Cabinet - 2D Division Tool**
Experimental option for quickly creating cabinet divisions. You can use this tool to find the divisions for inserting the other
- Upper Cabinet - 2D Layout Tool**
Experimental option for adding cabinet face line work in 2D over 2D Elevations of the basic cabinet Wall Styles in this kit.
- Base Cabinet - 2D Layout Tool**

2D CAB MASKS

- kitchen_base_cab_x_2d
- kitchen_base_cab_x_stool_2d
- kitchen_base_cab_bar_x_2d

Island Wall - Kick
Optional Island Design Solution. Set Display Configuration to High Detail before using this Wall Style. Apply to a

Island Wall
Base Cabinet Wall Style Variable Width with No Baseboard or Trim. Meant for Waterfall Edge Island.

Island - Waterfall Edges
Customized Slab Style with 3 Inch Thick Top and Edges. Use "SlabEdgeEdit" to Remove Unwanted Waterfall Edges. Use

Island Top
Customized Slab Style for Island Countertop design. Default Finish Height has been set to 36" A.F.F. with a

Island - 48 W - Waterfall Edges
Customized Curtainwall Style for Island Countertop with Waterfall Edges. Default 3 Inch Thick Edges by 48 Inch Cabinet

TOOLS - BASE

- Subtract Body from G1 Cabinet**
This routine uses the Wall Modifier tool to Subtract a Mass Element attached to the sink from any counter
- Cabinet Bodies**
Use this tool to Convert a Pline to a Cabinet Body Modifier.
- Base Cabinet - Endcaps**
Use this tool to Select from a Set of Predefined Endcap Styles

GENERATION 3 CABINETS

BASE UNITS

- Base Cab 1 Dr 1 Drw
- Base Cab 1 Dr
- Base Cab 2 Drs
- Base Cab 2 Drs 1 Drw
Base Cabinet with 2 Doors and 1 Drawer
- Base Cab 2 Drs 2 Drws
Base Cabinet with 2 Doors and 2 Drawers
- Base Cab 4 Drws
Base Cabinet with 2 equal drawers and 1 large
- Base Cab 3 Drws
Base Cabinet with 1 small and 2 equal Drawers

2-FACE

- Upper Cab - 2-Face - Glazed
- Upper Cab - 2-Face - Glazed - 45d
- kitchen_upper_cab_54_split
- kitchen_upper_cab_54_corner_split
- kitchen_upper_cab_54_2_corner_split

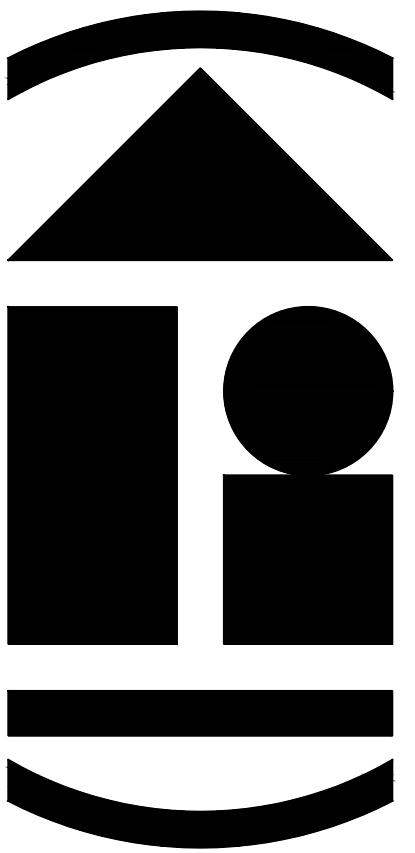
FULL HEIGHT

- Utility Cab - Upper + Lower (54) Doors
- Utility Cab - Full Height Doors
Full Height Doors
- Utility Cab - Open Middle (18)
- Utility Cab - Double Oven
Use this Cabinet for Double Ovens. Insert Oven MWBlocks as a separate step.

Upper Cabinet 84 Standard 36w
Uses a custom Door/Window Assembly Style to create an Upper Cabinet Door Assembly. Designed to be Anchored to

2 SIDED UNITS

- Upper Cabinet 54 2-Face - Glazed 36w
Only for double sided upper cabinets
- Upper Cabinet 60 2-Face - Glazed 36w
Only for double sided upper cabinets
- Upper Cabinet 66 2-Face - Glazed 36w
Only for double sided upper cabinets
- Upper Cabinet 54 2-Face - Glazed Muntins 36w
Only for double sided upper cabinets
- Upper Cabinet 60 2-Face - Glazed Muntins 36w
Only for double sided upper cabinets
- Upper Cabinet 66 2-Face - Glazed Muntins 36w
Only for double sided upper cabinets



ARCHIdigm
AutoCAD Architecture Content
SAN FRANCISCO, CA.
www.archidigm.com
info@archidigm.com

PROJECT:
MODERN FARMHOUSE
EXAMPLE PROJECT
AUTOCAD ARCHITECTURE

ISSUED FOR:
DEMONSTRATION

DATE: 5/21/24

SCALE: AS NOTED

DRAWING TITLE:

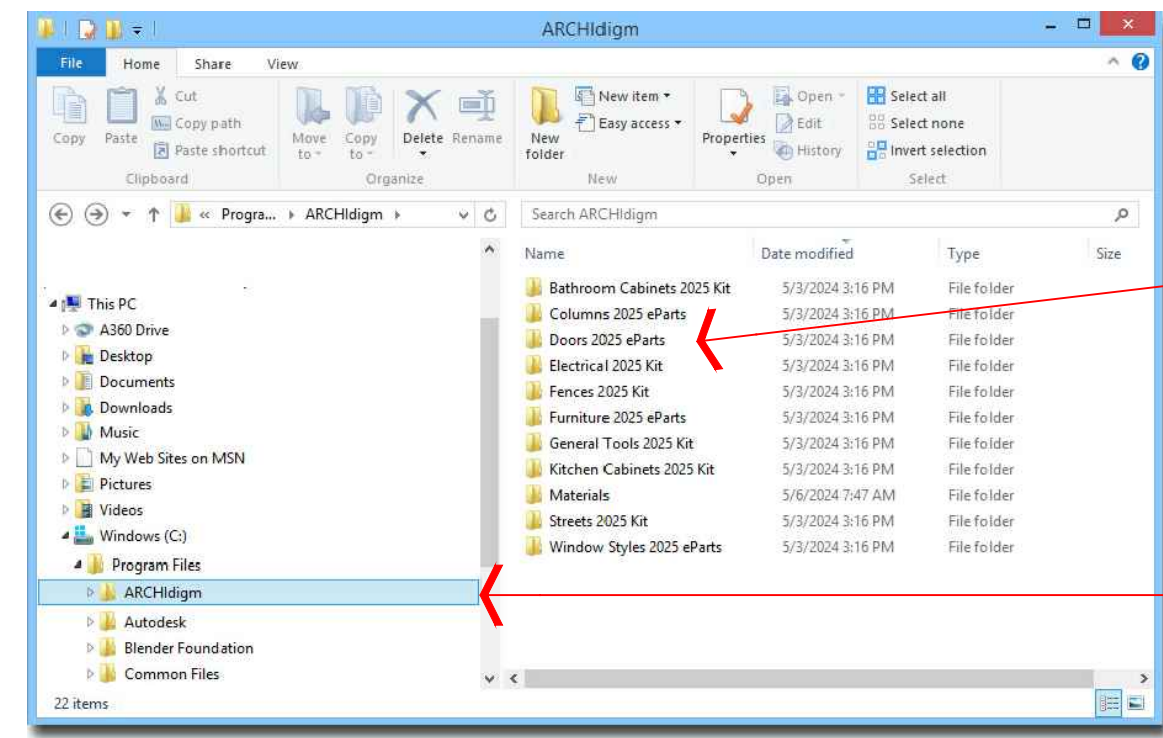
INTERIOR ELEVATIONS

SHEET NO.

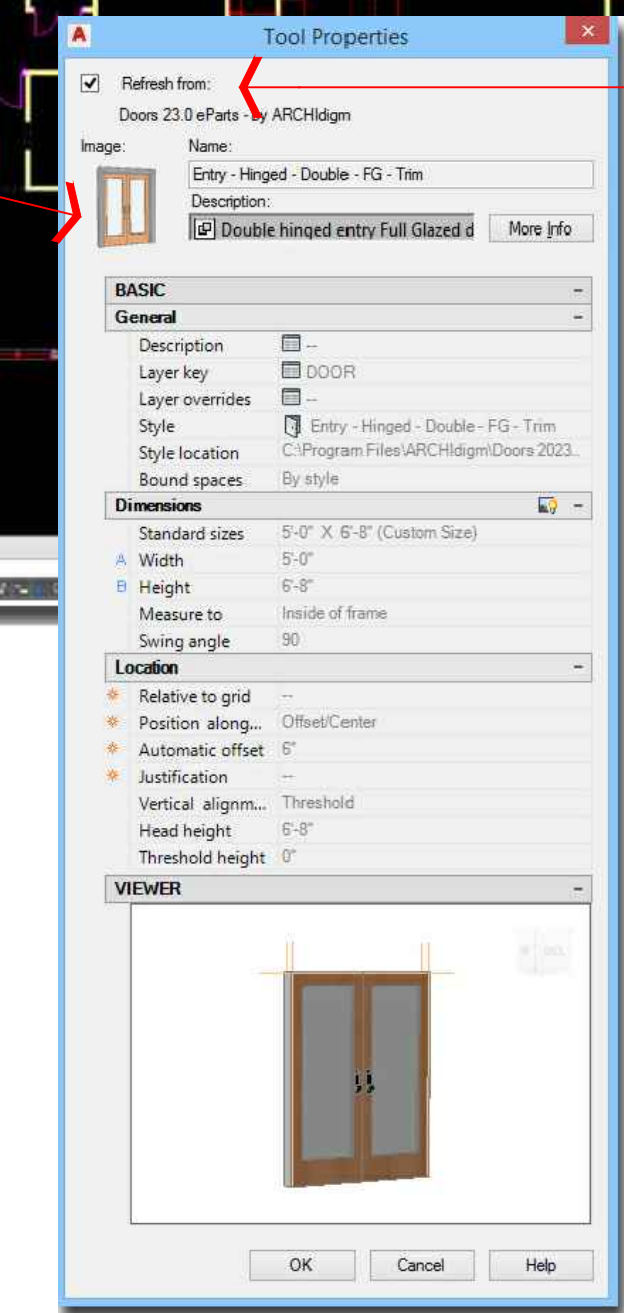
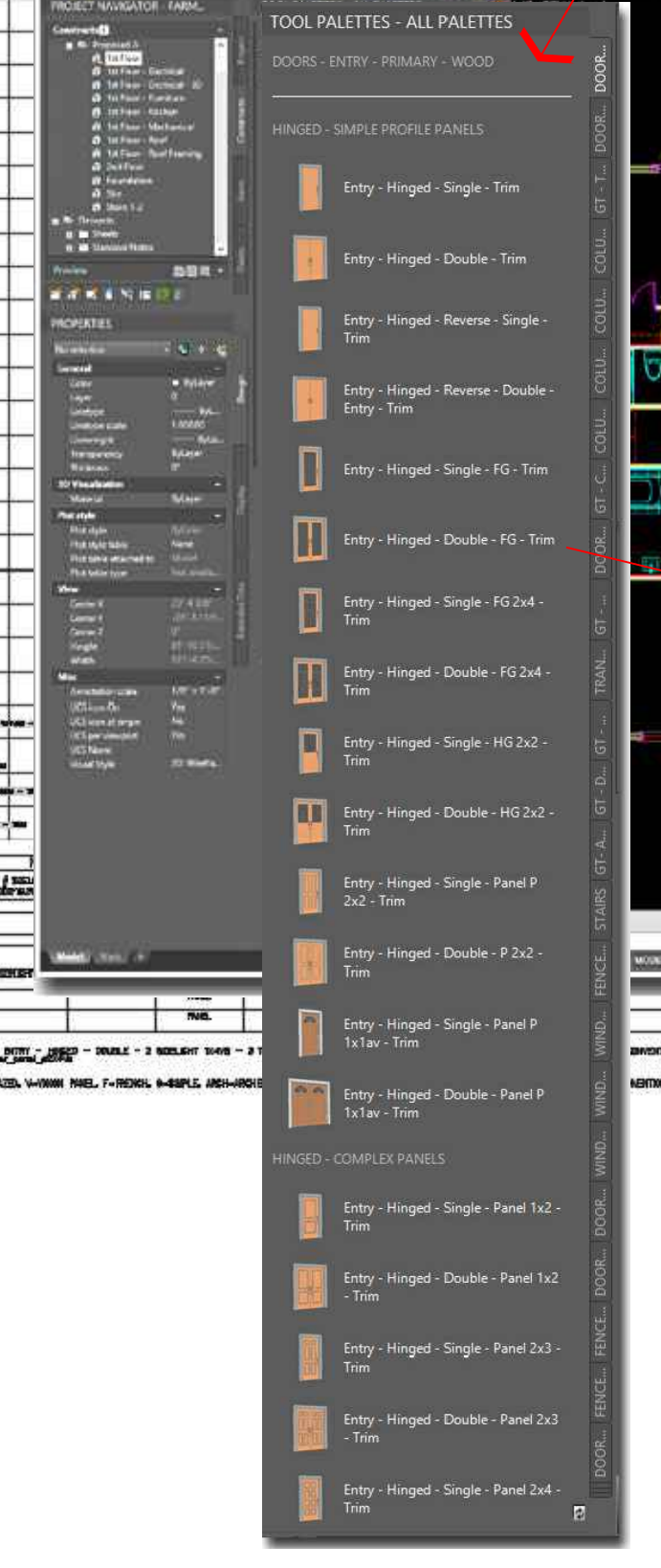
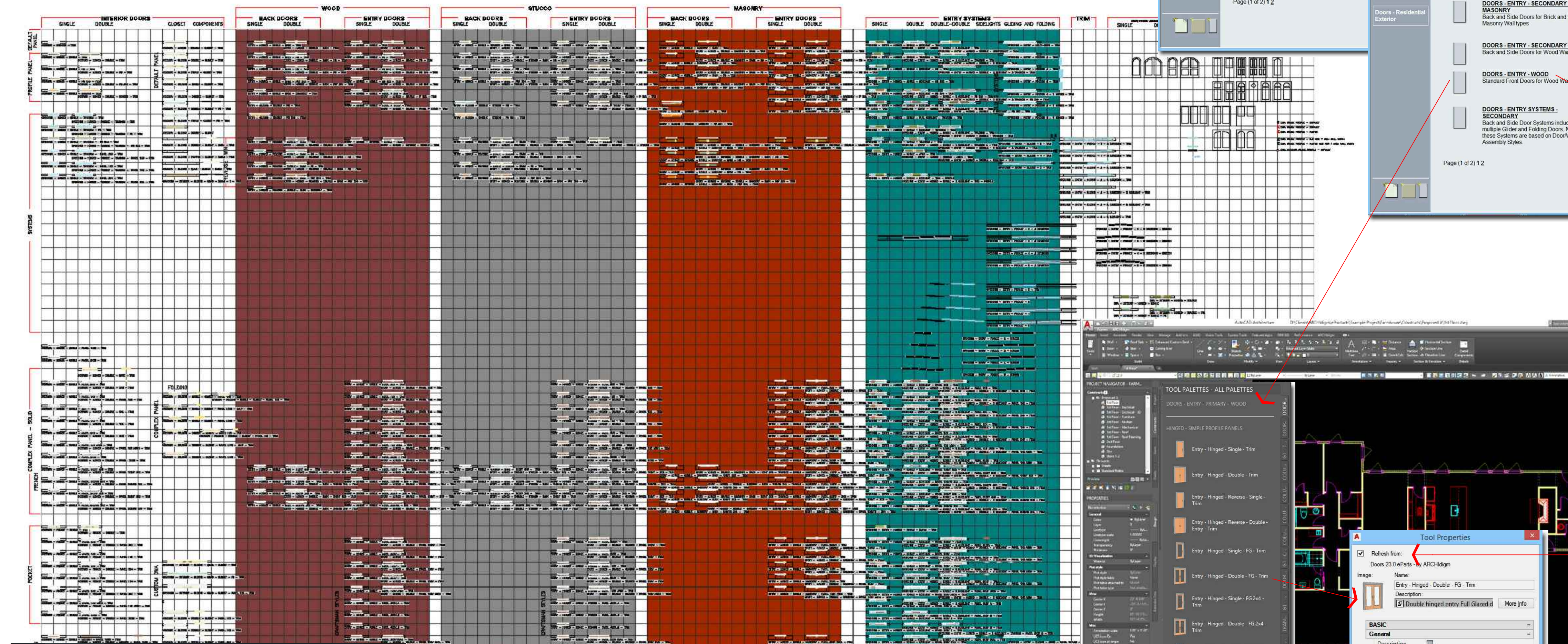
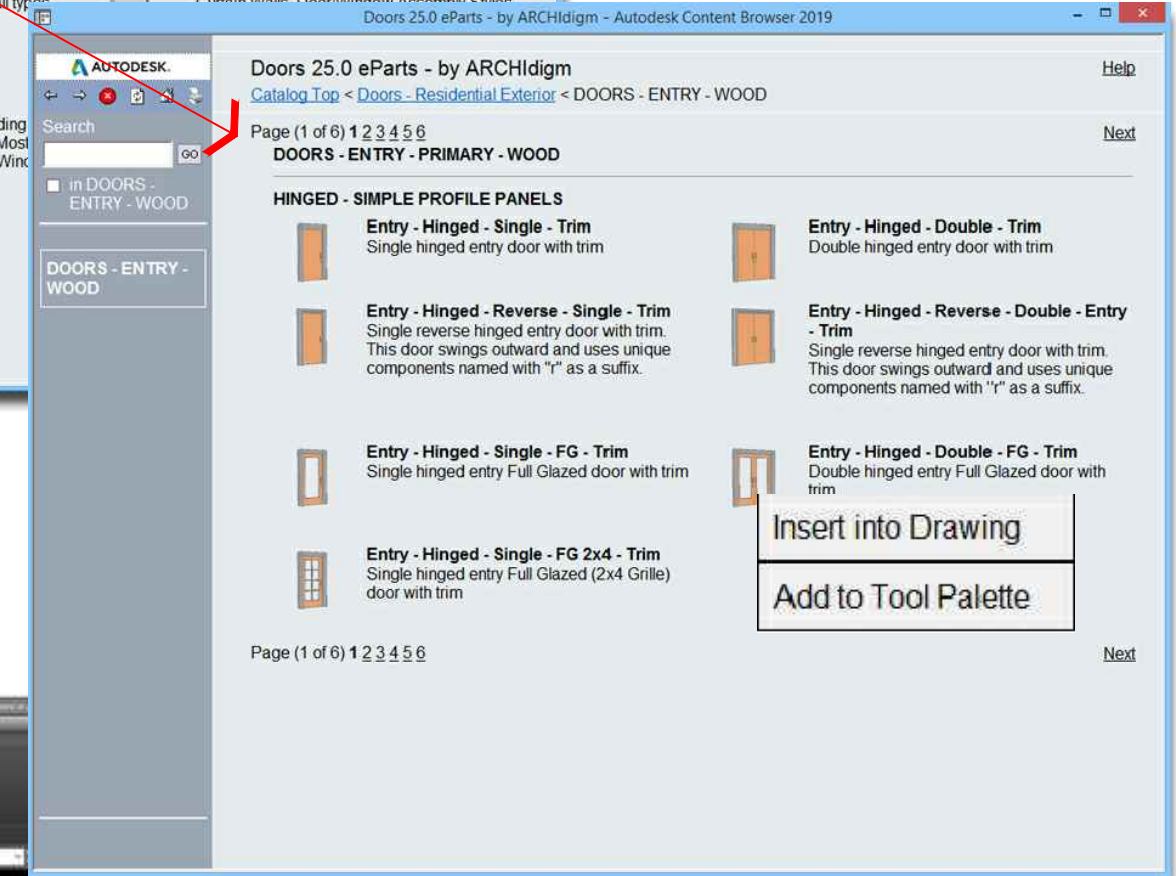
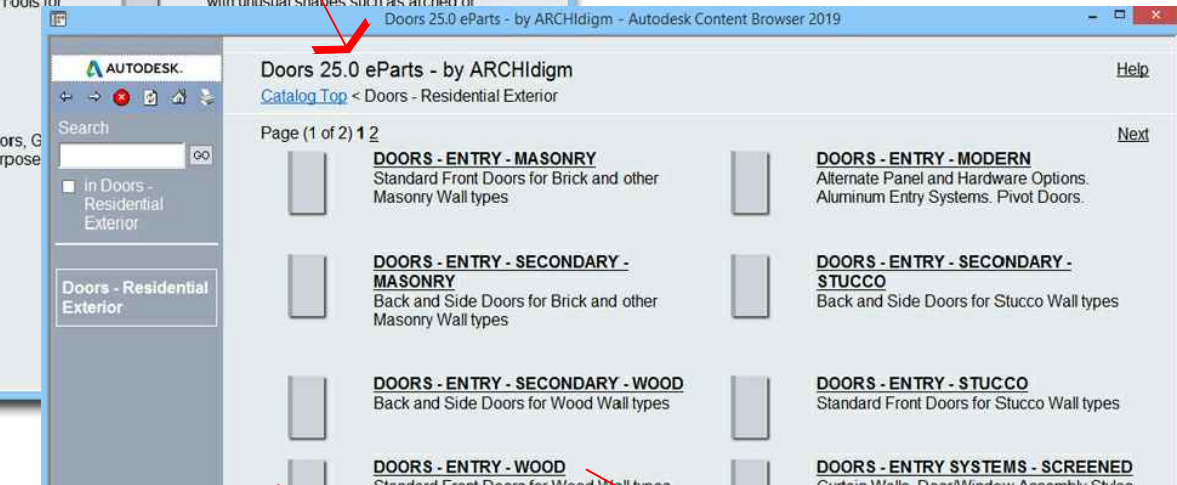
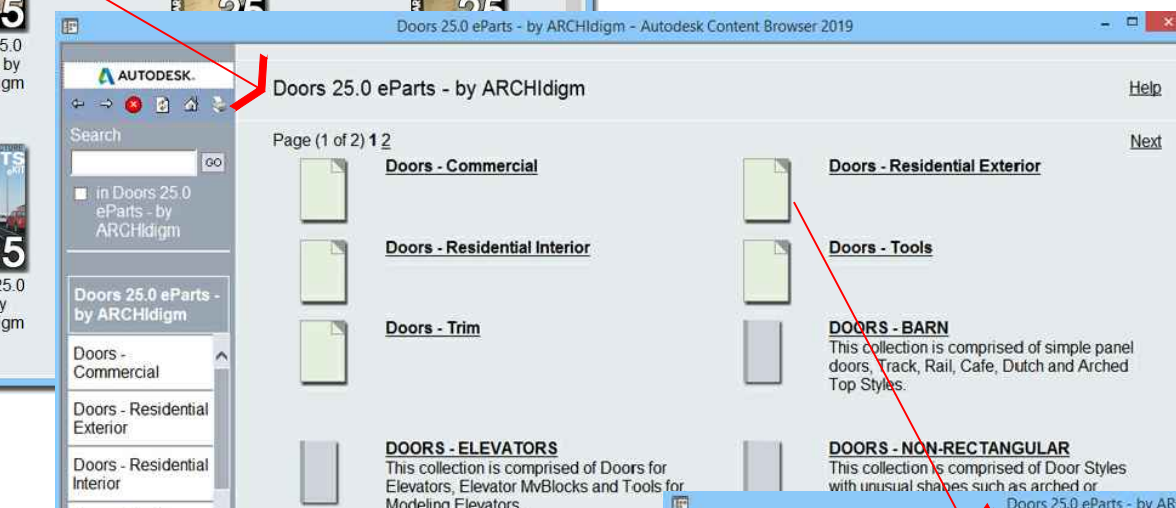
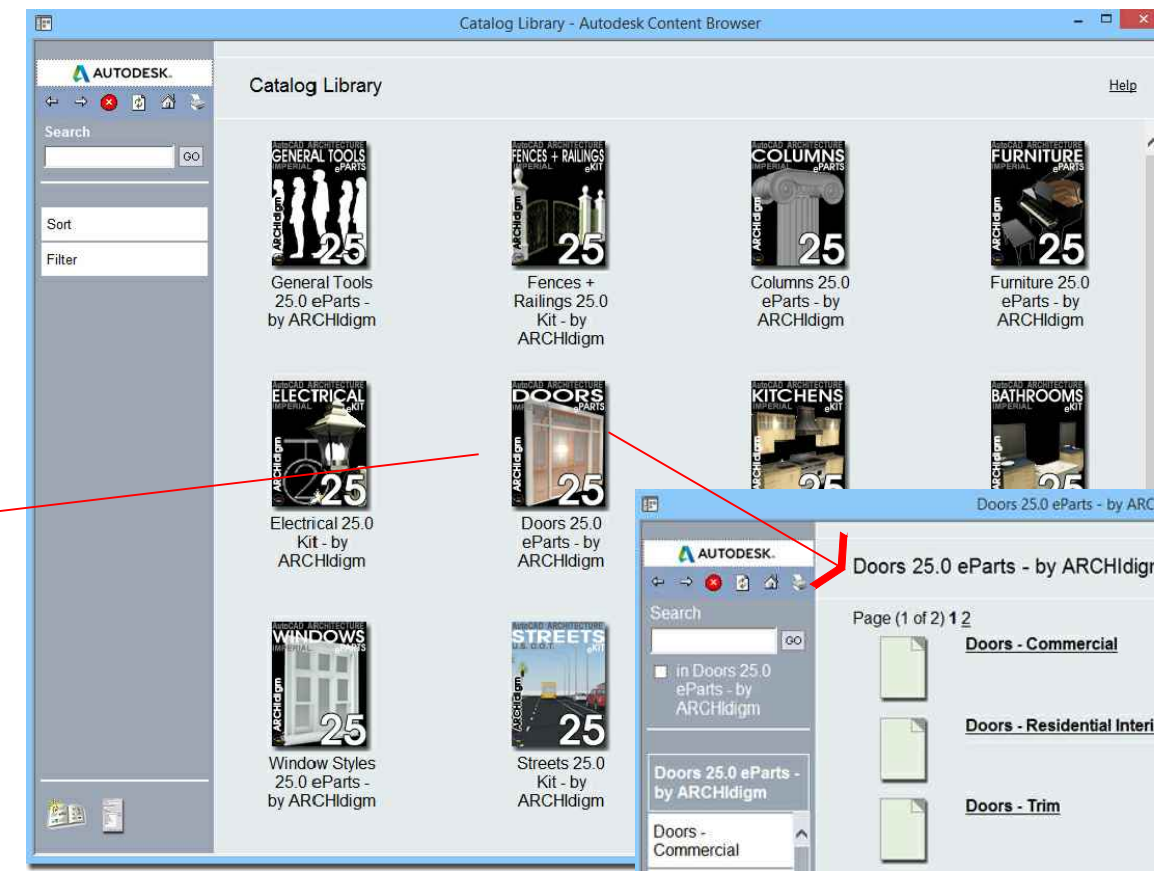
11.0

NUMEROUS CATALOGS FOR DIFFERENT TASKS

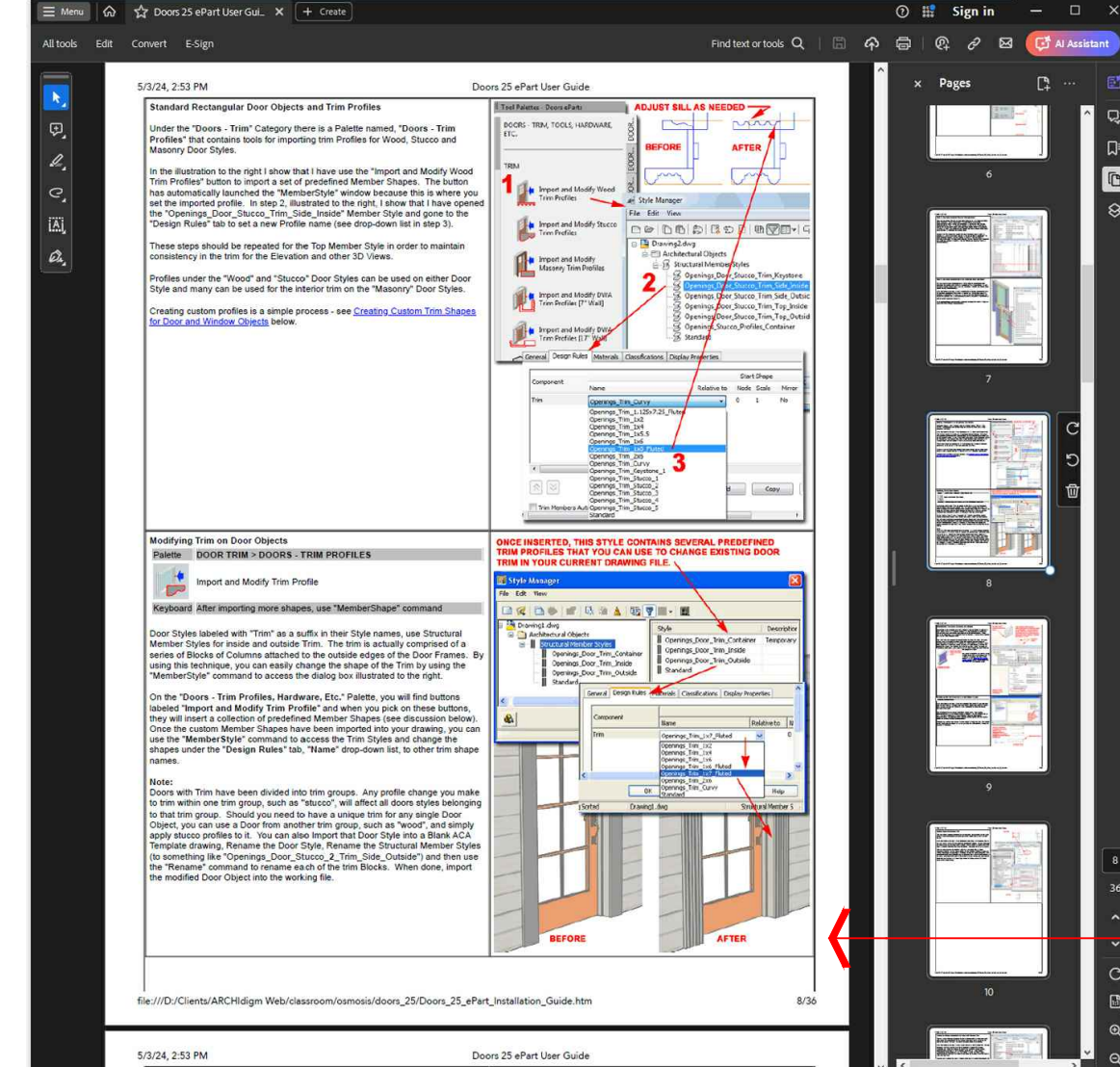
COMING FROM A TEACHING/TRAINING BACKGROUND, WE DESIGNED THESE KITS TO BE CUSTOMIZABLE. USE THEM AS IS OR TAKE WHAT YOU WANT TO CREATE YOUR OWN SOLUTIONS. YOU CAN BUILD YOUR OWN LIBRARY FILES OR JUST MIX AND MATCH TOOLS INTO YOUR OWN TOOL PALETTE COLLECTIONS.



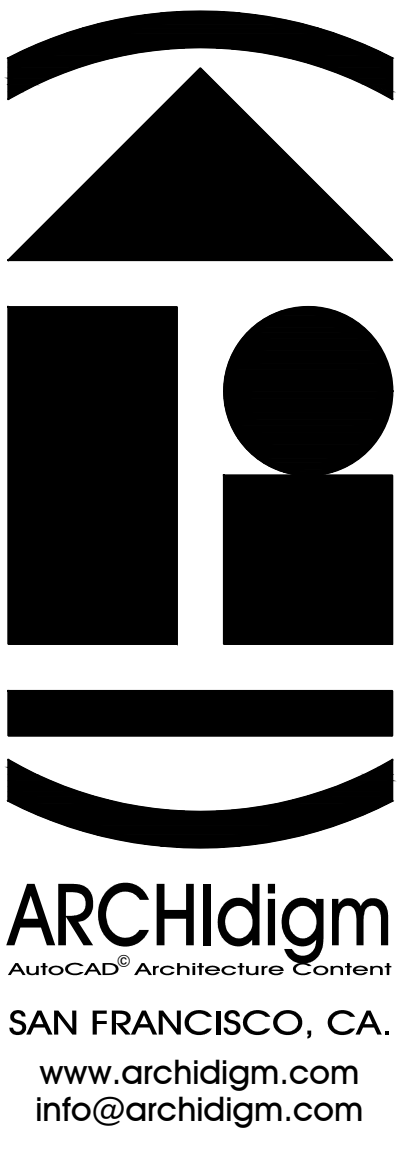
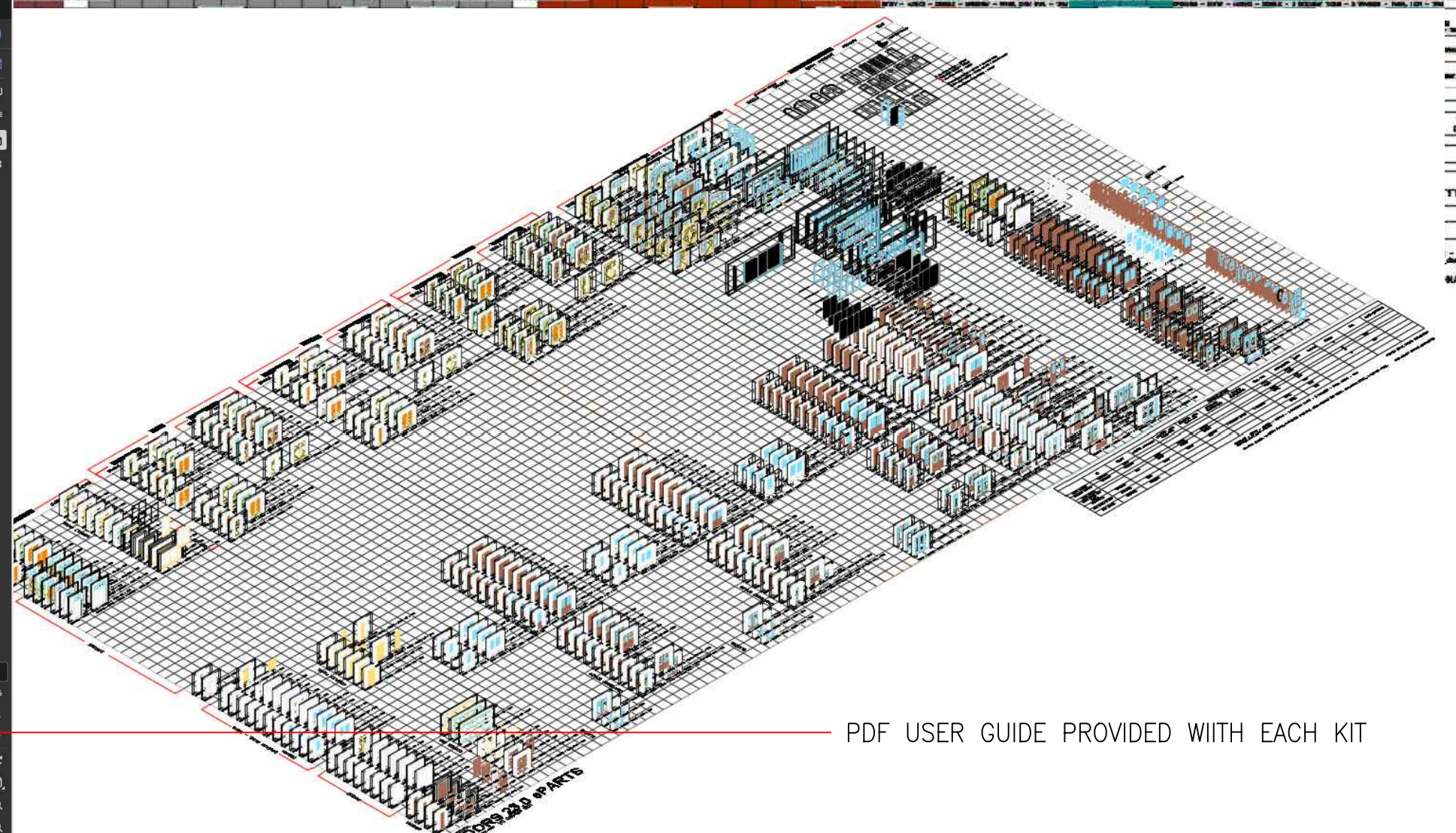
ALL CONTENT CATALOG FILES ARE STORED HERE
CONTENT LIBRARIES ARE ORGANIZED IN EASILY ACCESSIBLE .DWG FILES



TOOL PROPERTIES CAN BE CUSTOMIZED BY UNCHECKING "REFRESH FROM"



PDF USER GUIDE PROVIDED WITH EACH KIT



PROJECT:
MODERN FARMHOUSE
EXAMPLE PROJECT
AUTOCAD ARCHITECTURE

ISSUED FOR:
DEMONSTRATION

DATE: 5/21/24

SCALE: AS NOTED

DRAWING TITLE:
GENERAL NOTES

SHEET NO.

G1.0

G1.0 GENERAL NOTES.DWG